

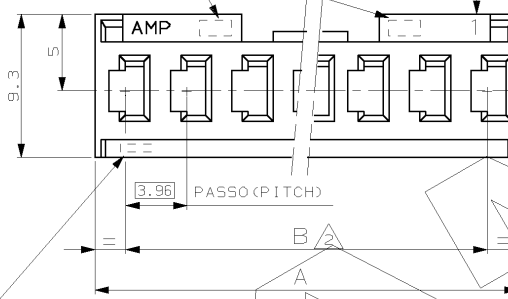
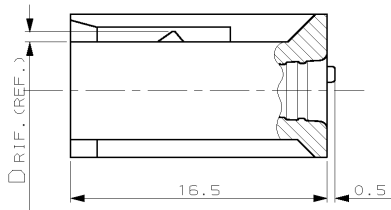
CODICE AMP DI NAZIONALITA' (---●●)
 E N° IMPRONTA STAMPO (POSIZIONE OPZIONALE).
 MANUFACTURING LOCATION CODE (---●●)
 AND MOULD POCKET NO. (OPTIONAL POSITION).

SCALA NON IMPEDIMENTIVA
 (DO NOT SCALE)
 DIMENSIONI IN mm

METRIC

PROIEZIONE EUROPEA
 (EUROPEAN PROJECTION)

INDICATORE DELLA VIA NO.1 (FACOLTATIVO)
 FIRST WAY IDENTIFICATION (OPTIONAL)



MARCHIO AMP, CODICE AMP DI NAZIONALITA' (---●●) E
 N° IMPRONTA STAMPO SOLO PER P/N 280590.
 FOR P/N 280590 ONLY: AMP TRADEMARK, MANUFACTURING
 LOCATION CODE (---●●) AND MOULD POCKET NO.

SPORGENZE DI IDENTIFICAZIONE LATO
 DI AGGANCIAMENTO DEL CONTATTO FEMMINA
 (IDENTIFICATION LEDGES FOR RECEPTACLE
 CONTACT LOCKING LANCE POSITIONING)

NOTE (NOTES)

- ① MATERIALE: POLICARBONATO CAR. VETRO UL94V-1, COLORE VERDE.
 (MATERIAL: G.F.F. POLYCARBONATE UL94V-1, COLOR GREEN).
- ② NO. PASSI x 3.96 ; TOLLERANZA NON CUMULATIVA.
 (NO. OF PITCHES x 3.96 ; TOLERANCE NOT CUMULATIVE).

47.4	43.59	2.0	0.70	12	280595
39.5	35.66			10	280594
31.6	27.74			8	280593
23.7	19.81			6	280592
15.7	11.89		6	4	280591
7.8	3.96	1.0	0.25	2	280590
A	B	C	D	NO. POS.	NUMERO (PART NUMBER)

CUSTOMER DRAWING FOR REFERENCE ONLY DISEGNO PER CLIENTE SOLO PER RIFERIMENTO

THIS DRAWING IS UNPUBLISHED RELEASE FOR PUBLICATION 19

© COPYRIGHT 19 BY AMP INCORPORATED, HARRISBURG, PA. ALL INTERNATIONAL RIGHT RESERVED. AMP PRODUCTS MAY BE COVERED BY U.S. AND FOREIGN PATENT AND/OR PATENT PENDING

TOLLERANZE: SE NON DIVERSAMENTE SPECIFICATO
 (TOLERANCES: UNLESS OTHERWISE SPECIFIED)

± 0.3

ANGOLI (ANGLES) ± 2°

DIS. (DR.) G. CAMP A 7 SEP 90

MATERIALE (MATERIAL) SCALA (SCALE) 4:1

AMP AMP ITALIA S.p.A.
 Corso F.lli. Cervi, 15
 COLLIGNO (TORINO)

DESCRIZIONE (DESCRIPTION) AMPMODU I
 RECEPTACLE HOUSINGS

LOC. SIZE (NUMERO (DWG NO)) REV. FOGLIO (SHEET)

I A 3 C - 280590 G 1 OF 1

REV.	REVISIONI (REVISION RECORD)	DIS. DATA (DR. DATE)	APP. (APP.)	CONT. (CHK)
G	REVISED PER ECN 13091 (REVISED DESCRIPTION)	C.C. 10-92		
F	AGGIORNATO E RIDISEGNATO (REVISED & REDRAWN)	G.C. B/90		

DISTRIBUZIONE (PRINT/DIST.)

AMP-11-7522-1-902