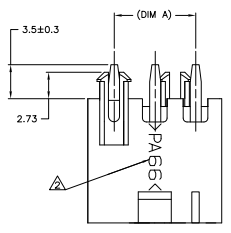
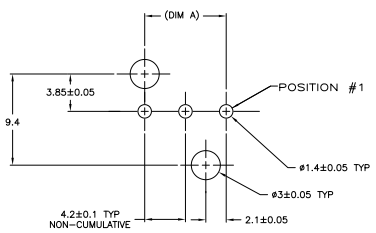
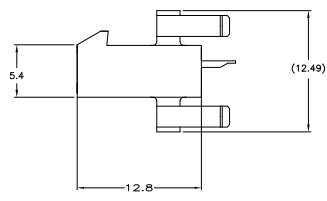
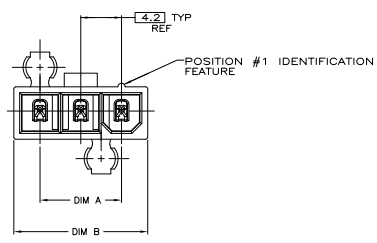


THIS DRAWING IS UNPUBLISHED
 © 2008 TYCO ELECTRONICS CORPORATION ALL RIGHTS RESERVED

REV	DATE	DESCRIPTION	BY	APP'D
CM 00				
A	08-08-03			



- ⚠ MATERIAL: HOUSING - NYLON, UL94V-2, WHITE.
CONTACTS - BRASS, TIN PLATED.
- ⚠ TYCO ELECTRONICS LOGO AND MATERIAL ID MAY BE LOCATED ON EITHER LONG SIDE OF PART.
- 3. GLOW WIRE APPROVED, CONTACT TYCO ELECTRONICS ENGINEERING FOR SPECIFICATION.



RECOMMENDED MOUNTING HOLE PATTERN
 FOR 1.75 MAX THICK P.C. BOARD
 COMPONENT SIDE SHOWN

22.2	16.8	5	2029113-5
18	12.6	4	2029113-4
13.8	8.4	3	2029113-3
DIM B	DIM A	NO. OF POSITIONS	PART NO

THIS DRAWING IS A CONTROLLED DOCUMENT.

DESIGNED BY	DATE	REVISED BY	DATE
CHECKED BY	DATE	REVISED BY	DATE
APPROVED BY	DATE	REVISED BY	DATE

METRIC

SIZE	DATE	ISSUE	NO.	REVISED TO
A1	00779	Q=2029113		

CUSTOMER DRAWING