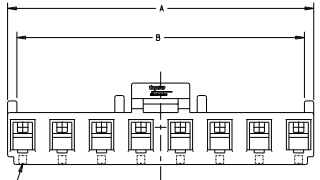
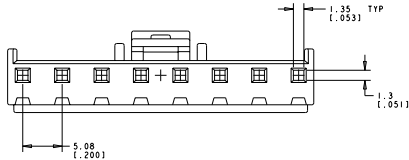
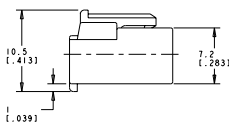
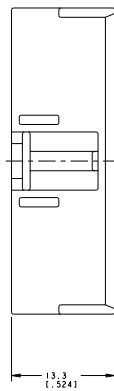
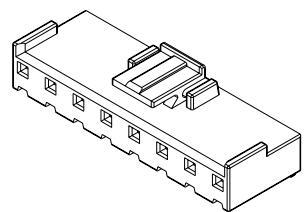


DATE DRAWING TO BE PUBLISHED: 24
 RECEIVED FOR PUBLICATION: 24
 (C) COPYRIGHT 2012 BY: ALL RIGHTS RESERVED

REV. NO.		REVISIONS			
CM	00	REVISED PER	DESCRIPTION	DATE	BY
	P	REVISED PER ECO-11-004820			



CIRCUIT NO 1



57.38 [2.259]	59.78 [2.354]	12	I-1744036-2
52.28 [2.058]	54.7 [2.154]	11	I-1744036-1
47.22 [1.859]	49.62 [1.954]	10	I-1744036-0
42.14 [1.659]	44.54 [1.754]	9	1744036-9
37.06 [1.459]	39.46 [1.554]	8	1744036-8
31.98 [1.259]	34.38 [1.354]	7	1744036-7
26.9 [1.059]	29.3 [1.154]	6	1744036-6
21.82 [0.859]	24.22 [0.954]	5	1744036-5
16.74 [0.659]	19.14 [0.754]	4	1744036-4
11.66 [0.459]	14.06 [0.554]	3	1744036-3
6.58 [0.259]	8.98 [0.354]	2	1744036-2

DIM B	DIM A	CKT	PART NO.

THIS DRAWING IS A CONTROLLED DOCUMENT. DATE: 11/20/12 STOCK# 810CT2004

STOCK# 810CT2004

RECEPTACLE
ECONOMY POWER
200 CENTERLINE

STATE: CA CASE CODE: DRAWING NO: A 00779 ©=1744036

CUSTOMER DRAWING

