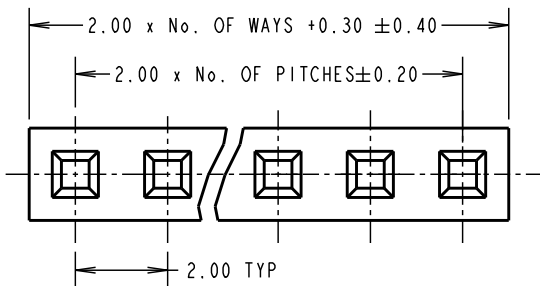


Customer Information Sheet

DRAWING No.: M22-301XX00 SHEET 2 OF 2 IF IN DOUBT - ASK © NOT TO SCALE THIRD ANGLE PROJECTION ALL DIMENSIONS IN mm

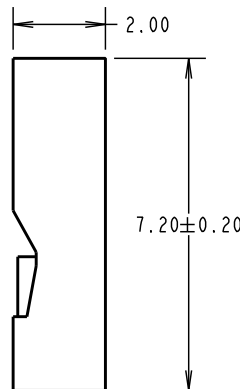
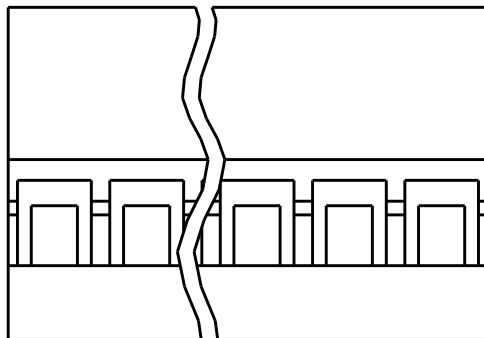


SPECIFICATION:

MATERIAL
 MOULDING = NYLON 66 UL94V-2, BLACK

ELECTRICAL:
 CURRENT RATING = 1A AC/DC
 VOLTAGE RATING = 250V AC MAX
 CONTACT RESISTANCE (INITIAL) = 10 MILLIOHMS MAX
 CONTACT RESISTANCE (AFTER CONDITIONING) = 20 MILLIOHMS MAX
 DIELECTRIC WITHSTANDING VOLTAGE = 800V AC FOR 1 MINUTE
 INSULATION RESISTANCE = 1000 MEGOHMS MIN

ENVIRONMENTAL:
 OPERATING TEMPERATURE = -25°C TO +85°C



NOTES:

1. TO BE USED WITH CRIMP CONTACTS M22-30400XX (REELED) OR M22-30500XX (LOOSE).
2. ALL TOLERANCES ARE ±0.10 UNLESS OTHERWISE STATED.

ORDER CODE:
M22-301XX00
 No. OF WAYS: 2
 3
 4
 5
 6
 7
 8
 9
 10
 12
 15
 20
 24
 30

| | | | |
|------------------------|------|----------|--------|
| SM | 10 | 09.02.11 | 11096 |
| NAME | ISS. | DATE | C/NOTE |
| APPROVED: S. MCCULLAGH | | | |
| CHECKED: M. G. PLESTED | | | |
| DRAWN: I. SANDY | | | |
| CUSTOMER REF.: | | | |
| ASSEMBLY DRG: | | | |

HARWIN

| | | |
|--|--|--|
| HARWIN USA TEL: 603 893 5376 FAX: 603 893 5396 mis@harwin.com | HARWIN Europe (UK) TEL: 023 9231 4545 FAX: 023 9231 4590 mis@harwin.co.uk | HARWIN Asia TEL: +65 6 779 4909 FAX: +65 6 779 3868 mis@harwin.com.sg |
|--|--|--|

THIS DRAWING AND ANY INFORMATION OR DESCRIPTIVE MATTER SET OUT HEREON ARE CONFIDENTIAL AND COPYRIGHT PROPERTY OF THE HARWIN GROUP AND MUST NOT BE DISCLOSED, LOANED, COPIED OR USED FOR MANUFACTURING, TENDERING OR FOR ANY OTHER PURPOSE WITHOUT THEIR WRITTEN PERMISSION.

TOLERANCES
 X = ±1mm
 X.X = ±0.25mm
 X.XX = ±0.10mm
 X.XXX = ±0.01mm
 ANGLES = ±5°
 UNLESS STATED

MATERIAL: SEE ABOVE
FINISH: SEE ABOVE
S/AREA: mm²

TITLE: 2.00mm SIL CRIMP SOCKET HOUSING
DRAWING NUMBER: M22-301XX00
 SHT 2 OF 2