

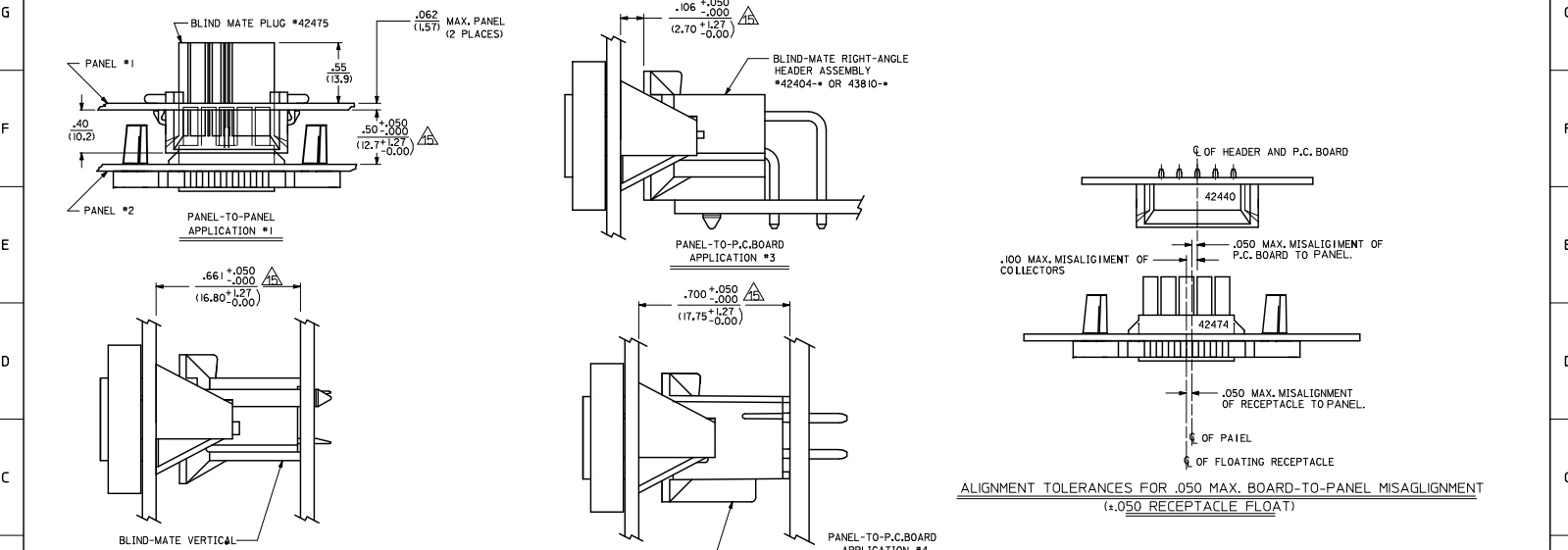
CKT. SIZE	DIM. 'A'	DIM. 'B'	DIM. 'C'	DIM. 'D'	DIM. 'E'	DIM. 'F'	DIM. 'G'	DIM. 'H'
2	1.417	N/A	.984	.884	.528	.398	.343	.213
4	1.583	.165	1.150	1.050	.693	.563	.508	.378
6	1.748	.331	1.315	1.215	.858	.728	.673	.543
8	1.913	.496	1.480	1.380	1.023	.893	.838	.708
10	2.078	.661	1.645	1.545	1.188	1.058	1.003	.873
12	2.244	.827	1.811	1.711	1.353	1.223	1.168	1.038
14	2.409	.992	1.976	1.876	1.518	1.388	1.333	1.203
16	2.575	1.157	2.142	2.042	1.683	1.553	1.500	1.370
18	2.740	1.322	2.307	2.207	1.848	1.718	1.665	1.535
20	2.905	1.487	2.472	2.372	2.013	1.883	1.830	1.700
22	3.071	1.653	2.638	2.538	2.178	2.048	1.995	1.865
24	3.236	1.818	2.803	2.703	2.343	2.213	2.160	2.030

- NOTES:**
- MATERIAL:
 *1" = NYLON 6/6, 94V-2, COLOR: NATURAL.
 *2" = NYLON 6/6, 94V-0, COLOR: NATURAL.
 *3" = NYLON 6/6, 94V-2, COLOR: BLACK.
 *4" = NYLON 6/6, 94V-0, COLOR: BLACK.
 - FINISH NOT APPLICABLE.
 - PRODUCT SPECIFICATION: PS-5556-002
 - PACKAGING: PK-42474-001
 - PART MATES WITH MINI-FIT BALL PLUG #42475, AND HEADERS 42404, 42440, 44068 & 43875.
 - PART TO BE USED WITH MOLEX FEMALE TERMINAL #5556.
 - THIS CONNECTOR ALLOWS FOR .050/(.127) MAX. MISALIGNMENT IN ANY DIRECTION.
 - THIS DIMENSION IS TO BE USED FOR ALIGNMENT OF THE MATING CONNECTOR.
 - CONNECTOR ASSEMBLIES ARE NOT TO BE MATED OR UNMATED WHILE CIRCUITS ARE LIVE.
 - THIS PART IS INTENDED FOR ONE PANEL INSERTION ONLY. REMOVAL AND RE-INSERTION CAN DAMAGE THE MOUNTING SPIRALS.
 - PANEL SHOULD BE PUNCHED IN THE DIRECTION OF CONNECTOR INSERTION.
 - BOTH SPIRALS SHOULD BE INSERTED INTO THE PANEL AT THE SAME TIME. ROCKING THE PART INTO PLACE MAY CAUSE SPIRAL DAMAGE.
 - THIS PART IS NOT INTENDED TO PROVIDE ANY ALIGNMENT OF CUSTOMER COMPONENTS OR MODULES, SUCH AS POWER SUPPLIES AND CHASSIS.
 - IF THIS PRODUCT IS STORED IN AN ENVIRONMENT WITH A RELATIVE HUMIDITY OF LESS THAN 50%, MOISTURE MUST BE ADDED. REFER TO TECHNICAL ADVISORY AS-45499-001 FOR INSTRUCTIONS.
 - A MAXIMUM TOLERANCE OF .050/(.127) ALLOWS FOR 2 POINTS OF ELECTRICAL CONTACT. A MAXIMUM TOLERANCE OF .020/(.51) ALLOWS FOR 4 POINTS OF CONTACT.
 - WIRES ARE TO BE DRESSED IN SUCH A MANNER TO ALLOW THE TERMINALS TO FLOAT FREELY IN THE POCKET. THIS PART CONFORMS TO CLASS 'B' REQUIREMENTS OF COSMETIC SPECIFICATION PS-45499-002.

QUALITY SYMBOLS □=0 □=0 □=0	GENERAL TOLERANCES (UNLESS SPECIFIED) 4 PLACES ± .015 3 PLACES ± .030 2 PLACES ± .030 1 PLACE ± .030 ANGULAR ±1/2°	DIMENSION STYLE IN/MM 1:1 DESIGN UNITS METRIC THIRD ANGLE PROJECTION	DRAWN BY DATE 1989/08/24 CHECKED BY DATE 1989/08/24 APPROVED BY DATE 1989/08/24	TITLE PANEL-MOUNT RECEPTACLE BLIND MATE MINI-FIT JR. SERIES MOLEX INCORPORATED	SHEET NO. 1 OF 2	
	DRAFT WHERE APPLICABLE MUST REMAIN WITHIN DIMENSIONS	MATERIAL NO. SD-42474-XXXX	DOCUMENT NO.	SEE SHEET 2	THIS DRAWING CONTAINS INFORMATION THAT IS PROPRIETARY TO MOLEX INCORPORATED AND SHOULD NOT BE USED WITHOUT WRITTEN PERMISSION	1 OF 2

13				12				11				10				9				8				7				6				5				4				3				2				1			
PART NUMBER	ENG. NUMBER	CKT. SIZE	MATERIAL (SEE NOTE 1.)	PART NUMBER	ENG. NUMBER	CKT. SIZE	MATERIAL (SEE NOTE 1.)	PART NUMBER	ENG. NUMBER	CKT. SIZE	MATERIAL (SEE NOTE 1.)	PART NUMBER	ENG. NUMBER	CKT. SIZE	MATERIAL (SEE NOTE 1.)	PART NUMBER	ENG. NUMBER	CKT. SIZE	MATERIAL (SEE NOTE 1.)	PART NUMBER	ENG. NUMBER	CKT. SIZE	MATERIAL (SEE NOTE 1.)	PART NUMBER	ENG. NUMBER	CKT. SIZE	MATERIAL (SEE NOTE 1.)	PART NUMBER	ENG. NUMBER	CKT. SIZE	MATERIAL (SEE NOTE 1.)	PART NUMBER	ENG. NUMBER	CKT. SIZE	MATERIAL (SEE NOTE 1.)	PART NUMBER	ENG. NUMBER	CKT. SIZE	MATERIAL (SEE NOTE 1.)												

NOT TOOLED	42474-0211	2	94V-2	NOT TOOLED	42474-0221	2	94V-0	NOT TOOLED	2	94V-2	NOT TOOLED	2	94V-0	NOT TOOLED	42474-0411	4	94V-2	NOT TOOLED	42474-0411	4	94V-0	NOT TOOLED	42474-0431	4	94V-2	NOT TOOLED	42474-0441	4	94V-0	NOT TOOLED	42474-0611	6	94V-2	NOT TOOLED	42474-0611	6	94V-0	NOT TOOLED	42474-0631	6	94V-2	NOT TOOLED	42474-0641	6	94V-0	NOT TOOLED	42474-0811	8	94V-2	NOT TOOLED	42474-0811	8	94V-0	NOT TOOLED	42474-0831	8	94V-2	NOT TOOLED	42474-0841	8	94V-0	NOT TOOLED	42474-1011	10	94V-2	NOT TOOLED	42474-1011	10	94V-0	NOT TOOLED	42474-1031	10	94V-2	NOT TOOLED	42474-1041	10	94V-0	NOT TOOLED	42474-1211	12	94V-2	NOT TOOLED	42474-1211	12	94V-0	NOT TOOLED	42474-1411	14	94V-2	NOT TOOLED	42474-1411	14	94V-0	NOT TOOLED	42474-1431	14	94V-2	NOT TOOLED	42474-1441	14	94V-0	NOT TOOLED	42474-1611	16	94V-2	NOT TOOLED	42474-1611	16	94V-0	NOT TOOLED	42474-1811	18	94V-2	NOT TOOLED	42474-1811	18	94V-0	NOT TOOLED	42474-2011	20	94V-2	NOT TOOLED	42474-2011	20	94V-0	NOT TOOLED	42474-2211	22	94V-2	NOT TOOLED	42474-2211	22	94V-0	NOT TOOLED	42474-2411	24	94V-2	NOT TOOLED	42474-2411	24	94V-0
------------	------------	---	-------	------------	------------	---	-------	------------	---	-------	------------	---	-------	------------	------------	---	-------	------------	------------	---	-------	------------	------------	---	-------	------------	------------	---	-------	------------	------------	---	-------	------------	------------	---	-------	------------	------------	---	-------	------------	------------	---	-------	------------	------------	---	-------	------------	------------	---	-------	------------	------------	---	-------	------------	------------	---	-------	------------	------------	----	-------	------------	------------	----	-------	------------	------------	----	-------	------------	------------	----	-------	------------	------------	----	-------	------------	------------	----	-------	------------	------------	----	-------	------------	------------	----	-------	------------	------------	----	-------	------------	------------	----	-------	------------	------------	----	-------	------------	------------	----	-------	------------	------------	----	-------	------------	------------	----	-------	------------	------------	----	-------	------------	------------	----	-------	------------	------------	----	-------	------------	------------	----	-------	------------	------------	----	-------	------------	------------	----	-------



SEE SHEET 1 EC NO. UCP2011-0682 DRAWN: JAGUILAR 20/09/10 CHKD: BELL 20/09/10 APPROV: SMITH 20/09/10	QUALITY SYMBOLS 	GENERAL TOLERANCES (UNLESS SPECIFIED) <table border="1"> <tr> <th></th> <th>mm</th> <th>INCH</th> </tr> <tr> <td>4 PLACES</td> <td>± .015</td> <td>± .0006</td> </tr> <tr> <td>3 PLACES</td> <td>± .010</td> <td>± .0004</td> </tr> <tr> <td>2 PLACES</td> <td>± 0.08</td> <td>± .0031</td> </tr> <tr> <td>1 PLACE</td> <td>± .010</td> <td>± .0004</td> </tr> </table>		mm	INCH	4 PLACES	± .015	± .0006	3 PLACES	± .010	± .0004	2 PLACES	± 0.08	± .0031	1 PLACE	± .010	± .0004	DIMENSION STYLE IN/MM DRAWN BY: GEP DATE: 1989/08/24 CHECKED BY: RJF DATE: 1989/08/24 APPROVED BY: RAS DATE: 1989/08/24	SCALE 1:1 DESIGN UNITS METRIC THIRD ANGLE PROJECTION	TITLE PANEL-MOUNT RECEPTACLE BLIND MATE MINI-FIT JR. SERIES MOLEX INCORPORATED
				mm	INCH															
			4 PLACES	± .015	± .0006															
3 PLACES	± .010	± .0004																		
2 PLACES	± 0.08	± .0031																		
1 PLACE	± .010	± .0004																		
DRAFT WHERE APPLICABLE MUST REMAIN WITHIN DIMENSIONS	SIZE SEE CHART	MATERIAL NO. SD-42474-****	DOCUMENT NO. SD-42474-****	SHEET NO. 2 OF 2																
THIS DRAWING CONTAINS INFORMATION THAT IS PROPRIETARY TO MOLEX INCORPORATED AND SHOULD NOT BE USED WITHOUT WRITTEN PERMISSION																				