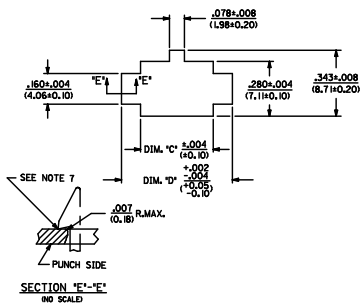
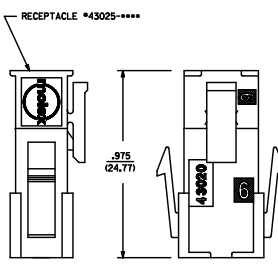
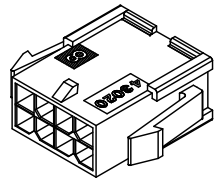
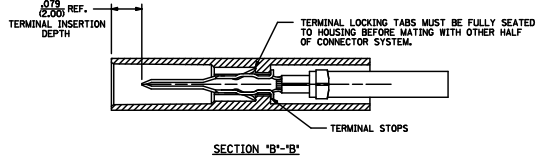
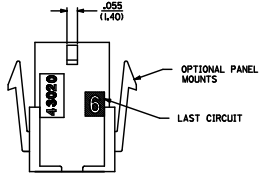
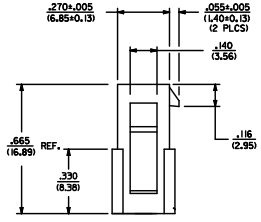
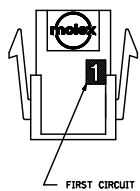
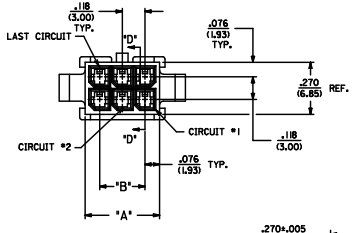


ASSEMBLY ITEM NUMBER	PART CHARACTERISTICS			MATERIAL	
	NUMBER OF POSITION	PANEL MOUNT OPTION			
43020-0200	02	YES		'B'	
43020-0201	02	NO			
43020-0400	04	YES			
43020-0401	04	NO			
43020-0600	06	YES			
43020-0601	06	NO			
43020-0800	08	YES			
43020-0801	08	NO			
43020-1000	10	YES			
43020-1001	10	NO			
43020-1200	12	YES			
43020-1201	12	NO			
43020-1400	14	YES			
43020-1401	14	NO			
43020-1600	16	YES			'A'
43020-1601	16	NO			
43020-1800	18	YES			
43020-1801	18	NO			
43020-2000	20	YES			
43020-2001	20	NO			
43020-2200	22	YES			
43020-2201	22	NO			
43020-2400	24	YES			
43020-2401	24	NO			

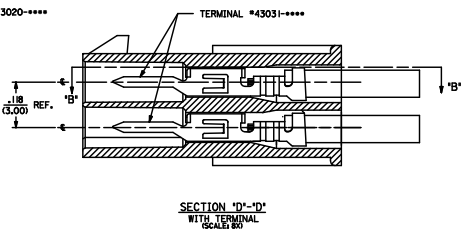
CKT. NO.	DIM. 'A'	DIM. 'B'	DIM. 'C'	DIM. 'D'
2	.152/(3.86)	N/A	.166/(4.21)	.311/(7.90)
4	.270/(6.85)	.118/(3.00)	.284/(7.21)	.429/(10.90)
6	.388/(9.85)	.236/(6.00)	.402/(10.21)	.547/(13.89)
8	.506/(12.85)	.354/(9.00)	.520/(13.21)	.665/(16.89)
10	.624/(15.85)	.472/(12.00)	.638/(16.21)	.783/(19.89)
12	.742/(18.85)	.591/(15.00)	.756/(19.21)	.901/(22.89)
14	.860/(21.85)	.709/(18.00)	.874/(22.20)	1.019/(25.88)
16	.978/(24.85)	.827/(21.00)	.992/(25.20)	1.137/(28.88)
18	1.096/(27.85)	.945/(24.00)	1.110/(28.20)	1.255/(31.88)
20	1.214/(30.85)	1.063/(27.00)	1.229/(31.22)	1.373/(34.87)
22	1.333/(33.85)	1.181/(30.00)	1.347/(34.22)	1.491/(37.87)
24	1.451/(36.85)	1.299/(33.00)	1.465/(37.22)	1.609/(40.87)



RECOMMENDED PANEL CUT-OUT



MATED MICRO-FIT CONNECTOR



SECTION 'D'-'D' WITH TERMINAL SCALE 80

- NOTES:
- HOUSING MATERIAL:
 - 'A' - UNFILLED POLYESTER, RATED U.L. 94V-0, COLOR IS BLACK.
 - 'B' - UNFILLED NYLON 6, RATED U.L. 94V-0, HALOGEN-FREE AND EG 80325-1, 4TH EDITION GLOW WIRE CAPABLE, COLOR IS BLACK.
 - * MATERIAL 'B' PARTS ARE IDENTIFIED WITH A GREEN LABEL OR A GREEN DOT ON A WHITE LABEL. PART NUMBERS LISTED AS 'B' MATERIAL BUT MANUFACTURED PRIOR TO 8/30/2010 OR NOT CONTAINING THIS 'GREEN IDENTIFICATION' MAY BE MATERIAL 'A'.
 - FINISH: N/A
 - PRODUCT SPECIFICATION: PS-43045
 - PACKAGING SPECIFICATION: N/A
 - THIS HOUSING MATES WITH MICRO-FIT RECEPTACLE #43025-****
 - THIS HOUSING TO BE USED WITH MOLEX MALE TERMINAL #43031-****
 - DESIGNED FOR .055(1.4) MINIMUM TO A .200(2.54) MAXIMUM THICK PANEL OR PRINTED CIRCUIT BOARD.
 - SEE SECTION 'D'-'D' FOR TERMINAL ORIENTATION IN HOUSING.
 - PANEL MOUNT FEATURES MUST LOCK ON SIDE OPPOSITE PUNCH SIDE FOR OPTIMUM RETENTION.
 - PART CONFORMS TO CLASS 'B' REQUIREMENTS OF COSMETIC SPECIFICATION PS-45499-002. SOME MODELS MAY HAVE A SMALL GATE BLEMISH NEAR THE GATE LOCATION THAT DOES NOT AFFECT FUNCTIONALITY.

QUALITY SYMBOLS	GENERAL TOLERANCES (UNLESS SPECIFIED)	DIMENSION STYLE	SCALE	DESIGN UNITS	THIRD ANGLE PROJECTION
4 PLACES ± .005 3 PLACES ± .010 2 PLACES ± 0.25 1 PLACE ± 0.35 ANGULAR ± 1/2°	mm INCH ± .010 ± .014 ± .010 ± .014	IN/MM	4:1	METRIC	THIRD ANGLE PROJECTION
CORRECT 39018 39 ENCL. 20-020-250 T. CHONGSARAKORN 2010/11/18 CHONGSARAKORN 2010/11/04 CHONGSARAKORN 2010/11/04 APPROVAL SIGNATURE 2010/11/18	DRAWN BY AFG CHECKED BY DATE 1993/01/07 BAP 1993/01/07 APPROVED BY FSMITH DATE 2010/11/18	MATERIAL NO. SDA-43020-**** DOCUMENT NO. SDA-43020-**** SHEET NO. 1 OF 1	MICRO-FIT(3.0) 2 THRU 24 CIRCUIT PLUG WITH OPTIONAL PANEL MOUNTS MOLEX INCORPORATED		
DRAFT WHERE APPLICABLE MUST REMAIN WITHIN DIMENSIONS SEE CHART THIS DRAWING CONTAINS INFORMATION THAT IS PROPRIETARY TO MOLEX INCORPORATED AND SHOULD NOT BE USED WITHOUT WRITTEN PERMISSION					