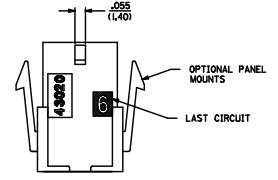
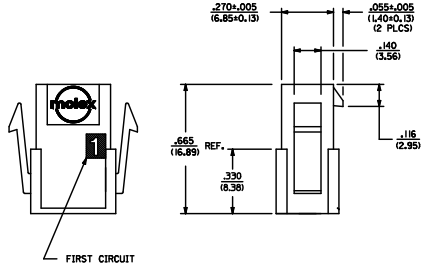
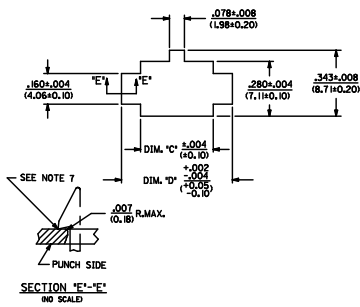
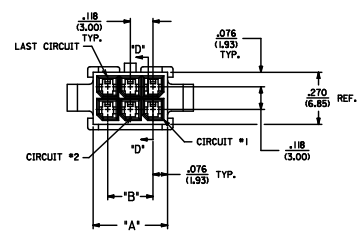
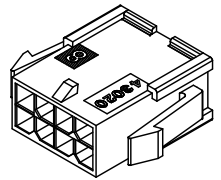
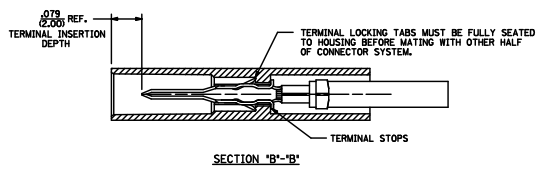


| ASSEMBLY ITEM NUMBER | PART CHARACTERISTICS |                    | MATERIAL |
|----------------------|----------------------|--------------------|----------|
|                      | NUMBER OF POSITION   | PANEL MOUNT OPTION |          |
| 43020-0200           | 02                   | YES                | 'B'      |
| 43020-0201           | 02                   | NO                 |          |
| 43020-0400           | 04                   | YES                |          |
| 43020-0401           | 04                   | NO                 |          |
| 43020-0600           | 06                   | YES                |          |
| 43020-0601           | 06                   | NO                 |          |
| 43020-0800           | 08                   | YES                |          |
| 43020-0801           | 08                   | NO                 |          |
| 43020-1000           | 10                   | YES                |          |
| 43020-1001           | 10                   | NO                 |          |
| 43020-1200           | 12                   | YES                |          |
| 43020-1201           | 12                   | NO                 |          |
| 43020-1400           | 14                   | YES                |          |
| 43020-1401           | 14                   | NO                 |          |
| 43020-1600           | 16                   | YES                |          |
| 43020-1601           | 16                   | NO                 |          |
| 43020-1800           | 18                   | YES                |          |
| 43020-1801           | 18                   | NO                 |          |
| 43020-2000           | 20                   | YES                |          |
| 43020-2001           | 20                   | NO                 |          |
| 43020-2200           | 22                   | YES                |          |
| 43020-2201           | 22                   | NO                 |          |
| 43020-2400           | 24                   | YES                |          |
| 43020-2401           | 24                   | NO                 |          |

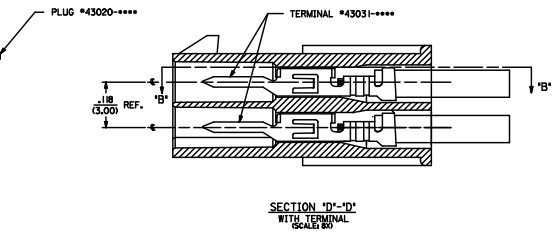
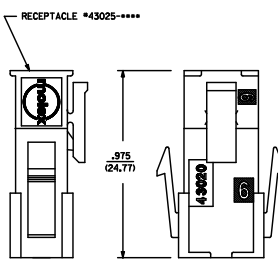
| CKT. NO. | DIM. 'A'      | DIM. 'B'      | DIM. 'C'      | DIM. 'D'      |
|----------|---------------|---------------|---------------|---------------|
| 2        | .152/(3.86)   | N/A           | .166/(4.21)   | .311/(7.90)   |
| 4        | .270/(6.85)   | .118/(3.00)   | .284/(7.21)   | .429/(10.90)  |
| 6        | .388/(9.85)   | .236/(6.00)   | .402/(10.21)  | .547/(13.89)  |
| 8        | .506/(12.85)  | .354/(9.00)   | .520/(13.21)  | .665/(16.89)  |
| 10       | .624/(15.85)  | .472/(12.00)  | .638/(16.21)  | .783/(19.89)  |
| 12       | .742/(18.85)  | .591/(15.00)  | .756/(19.21)  | .901/(22.89)  |
| 14       | .860/(21.85)  | .709/(18.00)  | .874/(22.20)  | 1.019/(25.88) |
| 16       | .978/(24.85)  | .827/(21.00)  | .992/(25.20)  | 1.137/(28.88) |
| 18       | 1.096/(27.85) | .945/(24.00)  | 1.110/(28.20) | 1.255/(31.88) |
| 20       | 1.214/(30.85) | 1.063/(27.00) | 1.229/(31.22) | 1.373/(34.87) |
| 22       | 1.333/(33.85) | 1.181/(30.00) | 1.347/(34.22) | 1.491/(37.87) |
| 24       | 1.451/(36.85) | 1.299/(33.00) | 1.465/(37.22) | 1.609/(40.87) |



RECOMMENDED PANEL CUT-OUT



PLUG WITH OPTIONAL PANEL MOUNTS ISO VIEW (8 CIRCUIT SHOWN)



MATED MICRO-FIT CONNECTOR

|   |  |                                       |                 |                |  |                        |
|---|--|---------------------------------------|-----------------|----------------|--|------------------------|
| CORRECT 39018 39<br>E.N.S. L.P. 2009/06/18<br>T. CHENG<br>CHENGSOUSEK 2010/11/11<br>APPROVAL 2010/11/18 | QUALITY SYMBOLS                                      | GENERAL TOLERANCES (UNLESS SPECIFIED) | DIMENSION STYLE | SCALE          | DESIGN UNITS   | THIRD ANGLE PROJECTION |
|   | ▽=0  | 4 PLACES ± .010                       | IN/MM           | 4:1            | METRIC   | ⊙                      |
|   | ▽=0  | 3 PLACES ± .010                       |                 |                |  |                        |
|   | ▽=0  | 2 PLACES ± 0.25                       |                 |                |  |                        |
|   |  | 1 PLACE ± 0.35                        |                 |                |  |                        |
|   |  | ANGULAR ±1/2°                         |                 |                |  |                        |
|   | DRAFT WHERE APPLICABLE MUST REMAIN WITHIN DIMENSIONS |                                       | DRAWN BY        | DATE           | TITLE  |                        |
|   |  |                                       | AFG             | 1993/01/07     | MICRO-FIT(3.0) 2 THRU 24 CIRCUIT PLUG WITH OPTIONAL PANEL MOUNTS |                        |
|   |  |                                       | BAP             | 1993/01/07     |  |                        |
|   |  |                                       | APPROVED BY     | DATE           |  |                        |
|   |  |                                       | FSMITH          | 2010/11/18     |  |                        |
|   |  |                                       | MATERIAL NO.    | DOCUMENT NO.   |  |                        |
|   |  |                                       | SEE CHART       | SDA-43020-**** |  |                        |
|   |  |                                       | SIZE            |                |  |                        |
|   |  |                                       |                 |                |  |                        |