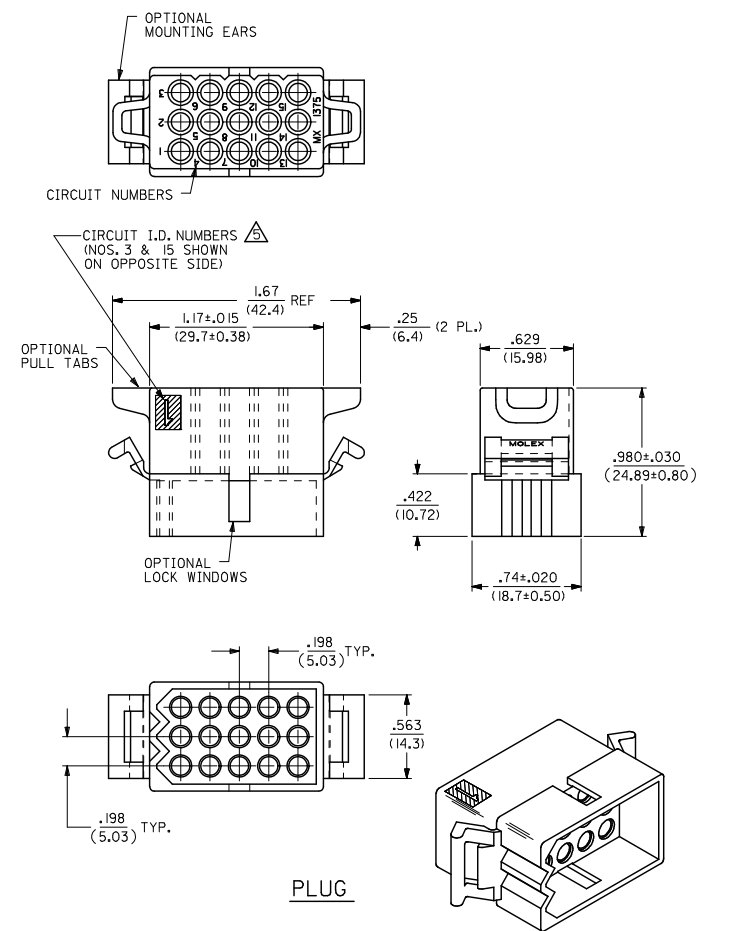
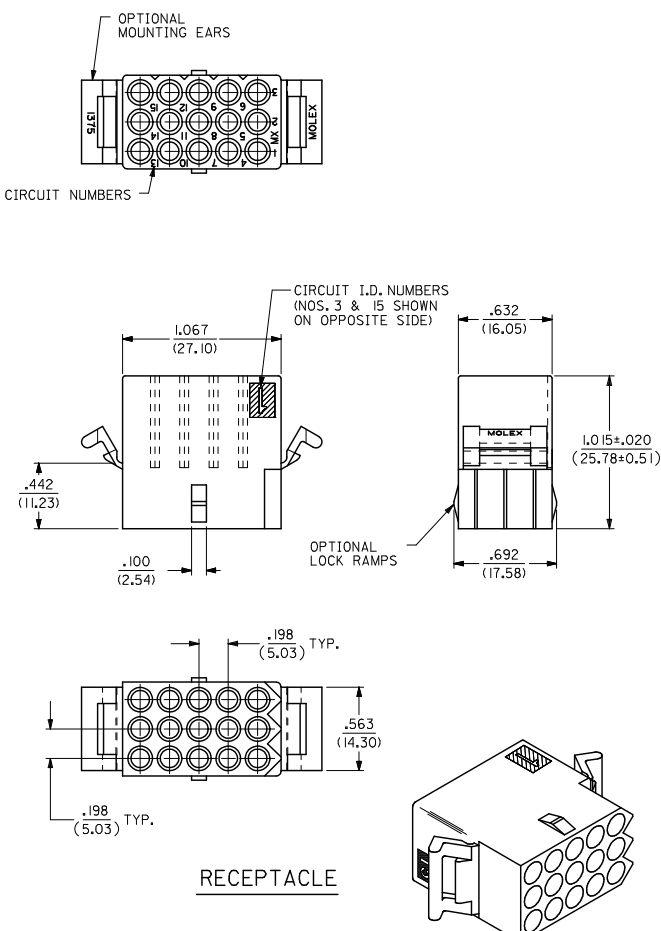


13 12 11 10 9 8 7 6 5 4 3 2 1



<b>UPDATE TITLE BLOCK</b> EC NO. UCP2007-2415 2007/04/17 DRW: M. L. H. G. CHK: K. S. M. I. D. APPR: S. M. I. T. H. 2007/05/03	<b>QUALITY SYMBOLS</b> 	<b>GENERAL TOLERANCES (UNLESS SPECIFIED)</b>		<b>DIMENSION STYLE</b> IN/MM		SCALE 2:1	DESIGN UNITS INCH	THIRD ANGLE PROJECTION
		4 PLACES ±.010 ±.010 3 PLACES ±.010 ±.010 2 PLACES ±.025 ±.014 1 PLACE ±.035 ±.010	mm INCH DRAWN BY KBW DATE 01/14/1989 CHECKED BY RW DATE 01/14/1989 APPROVED BY RAS DATE 01/14/1989	TITLE .093/(2.36) HOUSINGS PLUG & RECEPTACLE 15 CIRCUIT, .198/(5.03)CL				
		ANGULAR ±1/2°		MATERIAL NO. SD-1375-* DOCUMENT NO. Molex MOLEX INCORPORATED				
		DRAFT WHERE APPLICABLE MUST REMAIN WITHIN DIMENSIONS		SEE CHART		SHEET NO. 1 OF 2		

12 11 10 9 8 7 6 5 4 3 2 1

PLUG				RECEPTACLE		
ORDER NO	ENG NO	PACKAGING		ORDER NO	ENG NO	PACKAGING
03-09-2151	I375-P	PK-1375-001		03-09-1151	I375-R	PK-1375-001
03-09-2159	I375-P4	PK-1375-002		03-09-1152	I375-R1	PK-1375-001
03-09-2158	I375-P7	PK-1375-001		03-09-1154	I375-R6	PK-1375-001
03-09-7158	I375-P7BK	PK-1375-001	OBSOL.	03-09-1157	I375-R6-1	PK-1375-001
				03-09-6154	I375-R6BK	PK-1375-001

**LEGEND FOR PLUG:**

I375-P\*\*\*

OPTIONS:  
 BLANK = W/O EARS, W/ PULL TABS, W/O LOCK WINDOWS  
 2 = W/ STANDARD EARS, W/O PULL TABS, W/O LOCK WINDOWS  
 4 = W/ PREBENT EARS, W/O PULL TABS, W/ LOCK WINDOWS  
 6 = W/O EARS, W/O PULL TABS, W/ LOCK WINDOWS  
 7 = W/O EARS, W/ PULL TABS, W/ LOCK WINDOWS  
 8 = W/ PREBENT EARS, W/O PULL TABS, W/O LOCK WINDOWS

**COLOR:**

BLANK = NATURAL COLOR  
 AM = AMBER BK = BLACK BU = BLUE  
 BN = BROWN GY = GRAY GN = GREEN  
 OR = ORANGE RD = RED YW = YELLOW

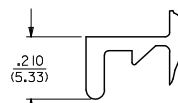
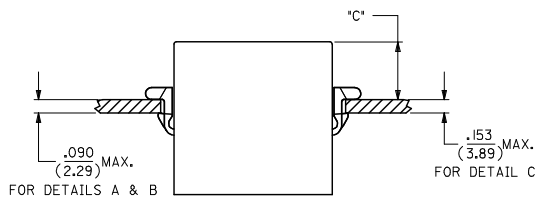
**LEGEND FOR RECEPTACLE:**

I375-R\*\*\*

OPTIONS:  
 BLANK = W/ PREBENT EARS, W/O LOCK RAMPS  
 1 = W/O EARS, W/O LOCK RAMPS  
 6 = W/ STANDARD EARS & LOCK RAMPS  
 6-1 = W/O EARS, W/ LOCK RAMPS

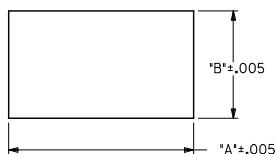
**COLOR:**

BLANK = NATURAL COLOR  
 AM = AMBER BK = BLACK BU = BLUE  
 BN = BROWN GY = GRAY GN = GREEN  
 OR = ORANGE RD = RED YW = YELLOW



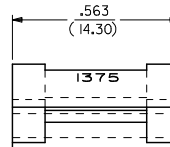
**DETAIL A**

.093/(2.36) STANDARD MOUNTING EAR  
(SCALE 4:1)



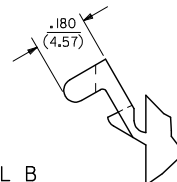
RECOMMENDED PANEL OPENING

HOUSING	DIM. 'A'	DIM. 'B'	'C' PREBENT EAR	'C' STANDARD EAR	'C' SPECIAL EAR
PLUG	1.343/(34.11)	.760/(19.30)	.40/(10.2)	.36/(9.1)	
RECEPT. W/ RAMPS	1.240/(31.50)	.725/(18.42)	.41/(10.4)	.37/(9.4)	.31/(7.8)
RECEPT. W/O RAMPS	1.240/(31.50)	.655/(16.64)	.41/(10.4)	.37/(9.4)	.31/(7.8)



**DETAIL B**

.093/(2.36) PREBENT MOUNTING EAR  
(SCALE 4:1)



**NOTES :**

- MATERIAL : NYLON TYPE 6/6, 94V-2.
- FINISH : NONE.
- PRODUCT SPECIFICATION : PS-02-09.
- PACKAGING INFORMATION : SEE CHART.
- ETCHED CIRCUIT I.D. NUMBERS ON SIDE OF HOUSINGS TO BE PRESENT ON PARTS FROM TOOLS BUILT AFTER 2/28/94.
- PARTS CONFORM TO CLASS B REQUIREMENTS OF COSMETIC SPECIFICATION PS-45499-002.

ADD NOTES 2, 4 & 6 EC NO. UCP2007-2415 2007/04/17 DR. W. H. L. H. G. CH. K. O. S. C. H. M. I. T. 2007/05/03 APPROV. S. M. I. T. H.	QUALITY SYMBOLS ▽=0 ▽=0	GENERAL TOLERANCES (UNLESS SPECIFIED)		DIMENSION STYLE IN/MM		SCALE 1:1	DESIGN UNITS INCH	THIRD ANGLE PROJECTION	
		4 PLACES ±.010 ±.010	3 PLACES ±.010 ±.010	DRAWN BY KBW	DATE 6/14/1989	TITLE .093/(2.36) HOUSINGS PLUG & RECEPTACLE 15 CIRCUIT .198/(5.03) CL			
		2 PLACES ±0.25 ±.014	1 PLACE ±0.35 ±.014	CHECKED BY RW	DATE 6/14/1989	MOLEX INCORPORATED			
		ANGULAR ±1/2°		APPROVED BY RAS	DATE 6/14/1989	MATERIAL NO. SD-1375-* DOCUMENT NO. SHEET NO. 2 OF 2			
DRAFT WHERE APPLICABLE MUST REMAIN WITHIN DIMENSIONS		SEE CHART		THIS DRAWING CONTAINS INFORMATION THAT IS PROPRIETARY TO MOLEX INCORPORATED AND SHOULD NOT BE USED WITHOUT WRITTEN PERMISSION					