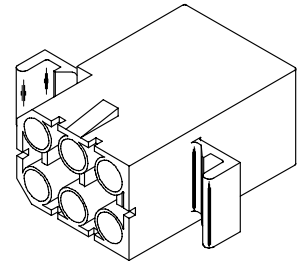
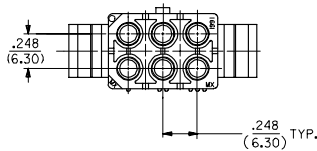
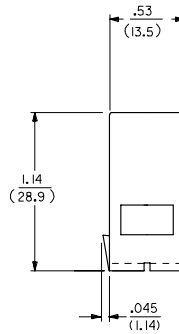
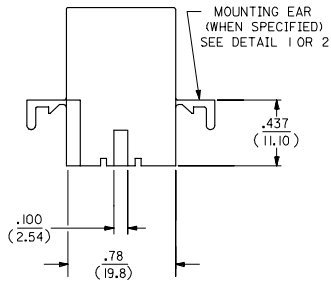
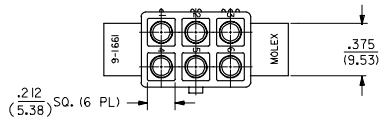


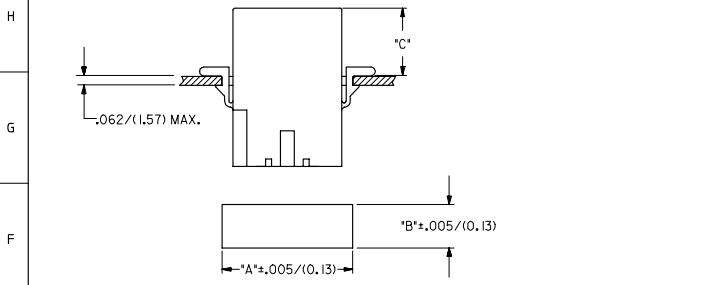
RECEPTACLE



RECEPTACLE HOUSING

UPDATE TITLE BLOCK EC NO. UCP2007-1498 2007/04/04 DRW:BELHAG CHK:BELHAG APPR:SMITH 2007/04/04	QUALITY SYMBOLS ▽=0 ▽=0	GENERAL TOLERANCES (UNLESS SPECIFIED)		DIMENSION STYLE IN/MM	SCALE 2:1	DESIGN UNITS INCH	THIRD ANGLE PROJECTION
		4 PLACES ± --- ± --- 3 PLACES ± --- ± .010 2 PLACES ± 0.25 ± .014 1 PLACE ± 0.36 ± --- ANGULAR ± 1 °	DRAWN BY JJS DATE 1988/02/25	CHECKED BY RW DATE 1988/02/25	APPROVED BY RAS DATE 1988/02/25	MATERIAL NO. SEE CHART	DOCUMENT NO. SD-1991-6*
DRAFT WHERE APPLICABLE MUST REMAIN WITHIN DIMENSIONS		TITLE .093(2.36) HOUSINGS, PLUG AND RECEPTACLE, 6 CKT., .248(6.30) CTRS. MOLEX INCORPORATED					
THIS DRAWING CONTAINS INFORMATION THAT IS PROPRIETARY TO MOLEX INCORPORATED AND SHOULD NOT BE USED WITHOUT WRITTEN PERMISSION							

PLUG			RECEPTACLE		
PART NO.	ENG. NO.	PKG. INFORMATION	PART NO.	ENG. NO.	PKG. INFORMATION
19-09-2061	1991-6P	PK-1991-001	19-09-1061	1991-6R	PK-1991-001
19-09-2062	1991-6P1	PK-1991-001	19-09-1062	1991-6R1	PK-1991-002
19-09-7061	1991-6PBK	PK-1991-001	19-09-6061	1991-6RBK	PK-1991-001
19-09-7062	1991-6P1BK	PK-1991-001	19-09-1068	1991-6R1-B	PK-1991-001



HOUSING	DIM. 'A'	DIM. 'B'	DIM. 'C' STD. EAR	DIM. 'C' PREBENT
PLUG	1.048/(26.62)	.658/(16.71)	.51/(12.9)	.52/(13.2)
RECEPTACLE	.946/(24.03)	.608/(15.44)	.53/(13.5)	.54/(13.7)

- NOTES:
- MATERIAL CODES:  
A - NYLON TYPE 6/6, UL 94V-2  
B - NYLON TYPE 6/6, UL 94V-0
  - FINISH: N/A
  - PRODUCT SPECIFICATION: PS-02-09
  - PACKAGING SPECIFICATION: SEE CHART
  - HOUSINGS FOR USE WITH MOLEX STD. .093/(2.36) TYPE TERMINALS.
  - PARTS CONFORM TO CLASS B REQUIREMENTS OF COSMETIC SPECIFICATION PS-45499-002.

**LEGEND:**

1991-6 \*\*\*\*\*

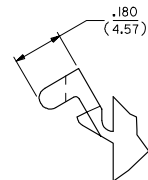
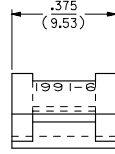
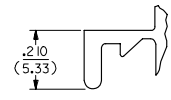
CIRCUIT SIZE

P = PLUG  
R = RECEPTACLE

BLANK = WITH STANDARD EARS  
1 = WITHOUT EARS  
2 = WITH PREBENT EARS, PER DETAIL 2

COLOR: BLANK=NATURAL COLOR  
AM=AMBER BK=BLACK BL=BLUE  
BN=BROWN GY=GRAY GN=GREEN  
OR=ORANGE RD=RED YW=YELLOW

BLANK = MATERIAL CODE A  
B = MATERIAL CODE B



**DETAIL 2**  
PREBENT MOUNTING EAR  
(SCALE 4:1)

ADD NOTES 2.4&6 EC NO: UCP2007-1498 U/DRW:SELHAG 2007/04/04 CHKD:SELHAG 2007/04/04 APPR:SMITH 2007/04/04	QUALITY SYMBOLS	GENERAL TOLERANCES (UNLESS SPECIFIED)	DIMENSION STYLE IN/MM	SCALE 2:1	DESIGN UNITS INCH	THIRD ANGLE PROJECTION
	▽=0	4 PLACES ± --- ± ---	DRAWN BY DATE JJS 1988/03/01	TITLE	.093/(2.36) HOUSINGS, PLUG AND RECEPTACLE, 6 CKT. .248/(6.30) CTRS.	
	▽=0	3 PLACES ± --- ± .010	CHECKED BY DATE RW 1988/03/01	MOLEX INCORPORATED		
	▽=0	2 PLACES ± 0.25 ± .014	APPROVED BY DATE RAS 1988/03/01	MATERIAL NO. SD-1991-6*	DOCUMENT NO.	SHEET NO. 3 OF 3
REV	DESCRIPTION	ANGULAR ± 1 °	DRAFT WHERE APPLICABLE MUST REMAIN WITHIN DIMENSIONS			
DRAFT WHERE APPLICABLE MUST REMAIN WITHIN DIMENSIONS			THIS DRAWING CONTAINS INFORMATION THAT IS PROPRIETARY TO MOLEX INCORPORATED AND SHOULD NOT BE USED WITHOUT WRITTEN PERMISSION			