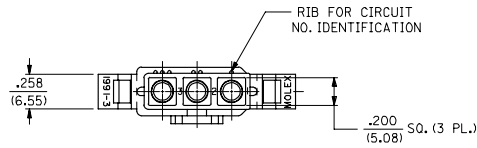


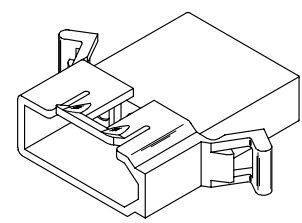
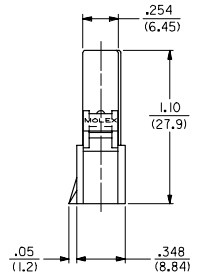
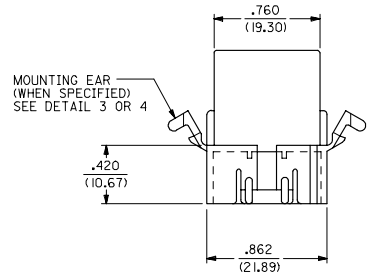
13 12 11 10 9 8 7 6 5 4 3 2 1

J  
I  
H  
G  
F  
E  
D  
C  
B  
A

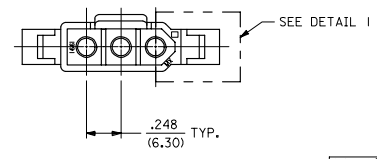


PT. NO. (19-09-2033)  
ENG. NO. 1991-3P4  
PLUG WITHOUT M.TG. EARS AND WITHOUT SQUARE ENDS.  
FOR USE WITH 2687 CONNECTOR

DETAIL 1



PLUG HOUSING



3	X
2	X
1	X

UPDATE TITLE BLOCK EC NO. UCP2007-1498 DRW:WJELHAG 2007/04/04 CHK:WJELHAG 2007/04/04 APPR:SMITH 2007/04/04	QUALITY SYMBOLS ▽=0 ▽=0	GENERAL TOLERANCES (UNLESS SPECIFIED) <table border="1"> <tr><th colspan="2">mm</th><th colspan="2">INCH</th></tr> <tr><td>4 PLACES</td><td>± .005</td><td>± .005</td><td>± .005</td></tr> <tr><td>3 PLACES</td><td>± .010</td><td>± .010</td><td>± .010</td></tr> <tr><td>2 PLACES</td><td>± .015</td><td>± .015</td><td>± .015</td></tr> <tr><td>1 PLACE</td><td>± .025</td><td>± .025</td><td>± .025</td></tr> <tr><td colspan="2">ANGULAR</td><td>± 1 °</td><td>± 1 °</td></tr> </table>	mm		INCH		4 PLACES	± .005	± .005	± .005	3 PLACES	± .010	± .010	± .010	2 PLACES	± .015	± .015	± .015	1 PLACE	± .025	± .025	± .025	ANGULAR		± 1 °	± 1 °	DIMENSION STYLE IN/MM	SCALE 2:1	DESIGN UNITS INCH	THIRD ANGLE PROJECTION
	mm		INCH																											
	4 PLACES	± .005	± .005	± .005																										
	3 PLACES	± .010	± .010	± .010																										
2 PLACES	± .015	± .015	± .015																											
1 PLACE	± .025	± .025	± .025																											
ANGULAR		± 1 °	± 1 °																											
DRAWN BY SEP	DATE 1988/03/07	CHECKED BY RW	DATE 1988/03/07	APPROVED BY RAS	DATE 1988/03/07	TITLE .093(2.36) HOUSINGS, PLUG AND RECEPTACLE, 3 CKT., .248(6.30) CTRS																								
MATERIAL NO. SEE CHART	DOCUMENT NO. SD-1991-3*	MOLEX INCORPORATED																												
DRAFT WHERE APPLICABLE MUST REMAIN WITHIN DIMENSIONS						THIS DRAWING CONTAINS INFORMATION THAT IS PROPRIETARY TO MOLEX INCORPORATED AND SHOULD NOT BE USED WITHOUT WRITTEN PERMISSION	SHEET NO. 1 OF 3																							

12 11 10 9 8 7 6 5 4 3 2 1

13 12 11 10 9 8 7 6 5 4 3 2 1

PLUG		
PART NO.	ENG. NO.	PKG. INFORMATION
I9-09-2031	I991-3P	PK-1991-001
I9-09-7031	I991-3PBK	PK-1991-001
I9-09-7032	I991-3PIBK	PK-1991-001
I9-09-2033	I991-3P4	
I9-09-2032	I991-3PI	PK-1991-002
I9-09-7034	I991-3PIOR	PK-1991-001
		OBS.

RECEPTACLE		
PART NO.	ENG. NO.	PKG. INFORMATION
I9-09-1032	I991-3R1	PK-1991-001
I9-09-6031	I991-3RBK	PK-1991-001
I9-09-6032	I991-3RIBK	PK-1991-001
I9-09-1030	I991-3R5	
		OBS.

**LEGEND:**

1991-3\*\*\*\*

CIRCUIT SIZE

P = PLUG  
R = RECEPTACLE

BLANK = PLUG; WITH PREBENT EARS  
PER DETAIL 4

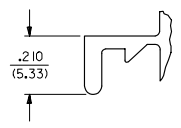
1 = WITHOUT EARS

4 = WITHOUT EARS, WITHOUT SQUARE ENDS PER DETAIL 1

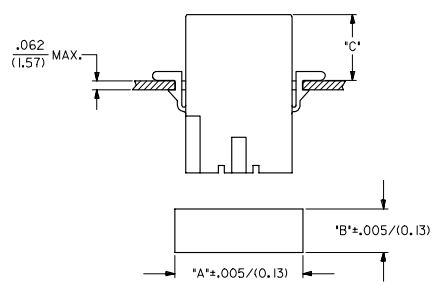
5 = RECEPT; WITH PREBENT EARS, PER DETAIL 4

COLOR: BLANK=NATURAL COLOR

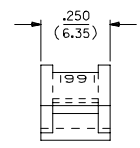
AM=AMBER BK=BLACK BU=BLUE  
BN=BROWN GY=GRAY GN=GREEN  
OR=ORANGE RD=RED YW=YELLOW



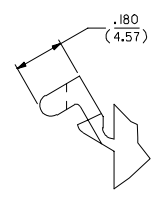
**DETAIL 3**  
STANDARD MOUNTING EAR  
(SCALE 4:1)



HOUSING	DIM. "A"	DIM. "B"	DIM. "C" STD.	EARDIM. "C" PREBENT
PLUG	.1022/(25.96)	.365/(9.27)	.48/(12.2)	.52/(13.2)
RECEPTACLE	.920/(23.37)	.311/(7.90)	.47/(11.9)	.51/(12.9)



**DETAIL 4**  
PREBENT MOUNTING EAR  
(SCALE 4:1)



**NOTES:**

- MATERIAL: NYLON TYPE 6/6, 94V-2.
- FINISH: NOT APPLICABLE
- PRODUCT SPECIFICATION: PS-02-09
- PACKAGING SPECIFICATION: SEE CHART
- ACCEPTS MOLEX .093/(2.36) SERIES TERMINALS.
- VERSION FOR USE WITH 2687 CONNECTOR.
- PARTS CONFORM TO CLASS B REQUIREMENTS OF COSMETIC SPECIFICATION PS-45499-002.

ADD NOTES 2,3,4 & 7 EC NO: UCP2007-1498 DRW: X DRW: X CK: X APP: X REV: X	QUALITY SYMBOLS ▽=0 ▽=0	GENERAL TOLERANCES (UNLESS SPECIFIED) <table border="1"> <tr> <th></th> <th>mm</th> <th>INCH</th> </tr> <tr> <td>4 PLACES</td> <td>± .010</td> <td>± .0004</td> </tr> <tr> <td>3 PLACES</td> <td>± .015</td> <td>± .0005</td> </tr> <tr> <td>2 PLACES</td> <td>± 0.25</td> <td>± .010</td> </tr> <tr> <td>1 PLACE</td> <td>± 0.35</td> <td>± .014</td> </tr> <tr> <td colspan="3">ANGULAR ± 1 °</td> </tr> </table>		mm	INCH	4 PLACES	± .010	± .0004	3 PLACES	± .015	± .0005	2 PLACES	± 0.25	± .010	1 PLACE	± 0.35	± .014	ANGULAR ± 1 °			DIMENSION STYLE IN/MM	SCALE 2:1	DESIGN UNITS INCH	THIRD ANGLE PROJECTION
		mm	INCH																					
4 PLACES	± .010	± .0004																						
3 PLACES	± .015	± .0005																						
2 PLACES	± 0.25	± .010																						
1 PLACE	± 0.35	± .014																						
ANGULAR ± 1 °																								
DRAWN BY: SEP CHECKED BY: RW APPROVED BY: RAS DATE: 1988/03/07		TITLE .093/(2.36) HOUSINGS, PLUG AND RECEPTACLE, 3 CKT., .248/(6.30) CTRS.		MATERIAL NO. SD-1991-3* DOCUMENT NO. SD-1991-3* SHEET NO. 3 OF 3		MOLEX INCORPORATED																		

12 11 10 9 8 7 6 5 4 3 2 1

ib\_frame\_C\_P\_ME\_T  
Rev. D 2004/04/02