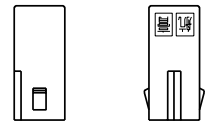
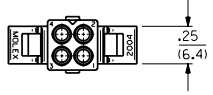
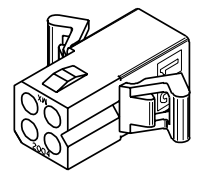
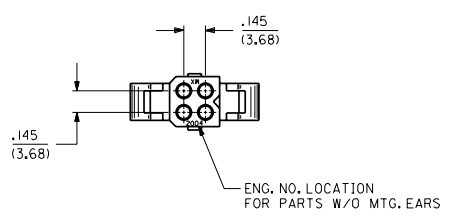
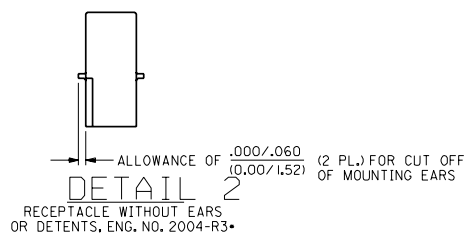
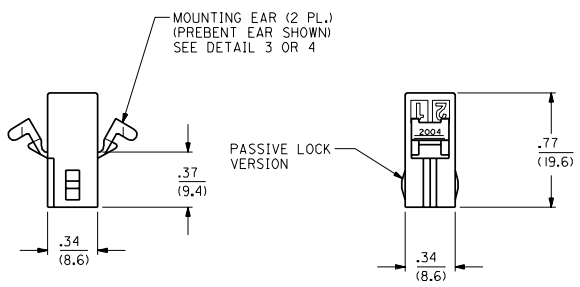
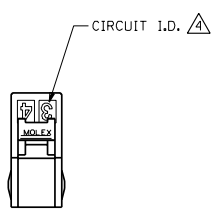


13 12 11 10 9 8 7 6 2004 4 3 2 1



DETAIL 1
POSITIVE LOCK VERSION
ENG. NO. 2004-R5*



RECEPTACLE HOUSING

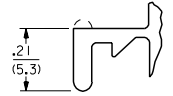
					DIMS. SHOWN METRIC INCH		▽ = 0 ▼ = 0 REVISE ONLY ON CAD SYSTEM	
					UNLESS OTHERWISE SPECIFIED TOLERANCES ANGULAR \pm .005		TITLE	
					INCH METRIC		PLUG AND RECEPTACLE HOUSINGS, 4 CIRCUIT .062/(1.57) DIA.	
					D PLAGE \pm .010 ---		SHEET NO. DATE	
					D PLAGE \pm .014 \pm 0.25		2 8/27/91	
					I PLAGE --- \pm 0.36		MOLEX INCORPORATED U.S.A.	
					DRAFT WHERE APPLICABLE MUST REMAIN WITHIN DIMENSIONS		PART NO. DRWG. NO.	
					DRWG. BY G.C. DRWG. BY RW		SEE CHART SD-2004-*	
					APP'D. BY RS SCALE 4:1		THIS DRAWING CONTAINS INFORMATION THAT IS PROPRIETARY TO MOLEX INC. AND SHOULD NOT BE USED WITHOUT WRITTEN PERMISSION. CP C	
LTR.	REVISIONS	LTR.	REVISIONS	1	SEE SHEET 1			

13 12 11 10 9 8 7 6 5 4 3 2 1

PLUG		RECEPTACLE		
PART NO.	ENG. NO.	PART NO.	ENG. NO.	
03-06-2043	2004-P	03-06-1043	2004-R	
03-06-7043	2004-PBK	03-06-6043	2004-RBK	
03-06-2044	2004-PI	03-06-1044	2004-RI	
03-06-7044	2004-PIBK	03-06-6044	2004-RIBK	OBSOLETE
PRELIMINARY	2004-P2	03-06-1046	2004-R3	OBSOLETE
03-06-7045	2004-PIRD	03-06-1052	2004-R5	OBSOLETE
03-06-7046	2004-PIBN	03-06-6052	2004-R5BK	OBSOLETE
03-06-7047	2004-PIOR	PRELIMINARY	2004-R2	
		03-06-6045	2004-RRD	OBSOLETE
		03-06-6046	2004-RBN	OBSOLETE
		03-06-6048	2004-ROR	OBSOLETE

LEGEND:

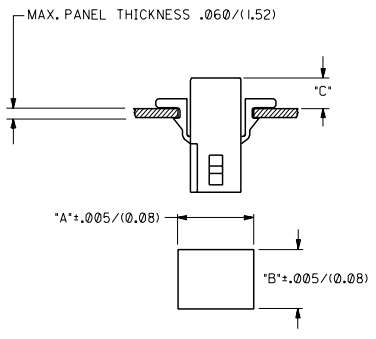
2004-***
 P = PLUG
 R = RECEPTACLE
 BLANK = WITH STANDARD EARS
 1 = WITHOUT EARS
 2 = WITH PREBENT EARS
 3 = W/O EARS, W/O DETENTS
 5 = W/O EARS, WITH POSITIVE LOCKS
 COLOR:
 BLANK = NATURAL
 AM=AMBER BK=BLACK BU=BLUE
 BN=BROWN GY=GRAY GN=GREEN
 OR=ORANGE RD=RED YW=YELLOW



DETAIL 3

STANDARD MOUNTING EARS
(SCALE 4:1)

NOTE:
 THIS DRAWING ENCOMPASSES ALL 2004
 SERIES HOUSINGS EXCEPT 2004-R7.



- NOTES:**
- MATERIAL - NYLON TYPE 6/6, 94V-2
 - THIS PRODUCT COMPLIES WITH MOLEX PRODUCT SPEC 02-06.
 - HOUSINGS FOR USE WITH MOLEX .062/(1,57) DIA. SERIES TERMINALS.
- ⚠️ CIRCUIT I.D. NUMBERS ON SIDE OF HOUSING APPEAR ON PARTS FROM TOOLS BUILT AFTER 8/26/91.
- ⚠️ THIS DIMENSION .020/(0,51) LESS ON TOOLS BUILT PRIOR TO 8/26/91.



DETAIL 4

PREBENT MOUNTING EARS
(SCALE 4:1)

RECOMMENDED HOLE PATTERN

HOUSING	DIM. "A"	DIM. "B"	PREBENT EAR DIM. "C"	STD. EAR DIM. "C"
PLUG	.615 (15,62)	.465 (11,81)	.26 (6,6)	.26 (6,6)
RECEPTACLE	.506 (12,85)	.400 (10,16)	.24 (6,1)	.24 (6,1)

DIMENSIONS SHOWN IN METRIC (INCH UNLESS OTHERWISE SPECIFIED)		▽ = 0	▼ = 0	REVISE ONLY ON CAD SYSTEM
TOLERANCES ANGULAR ± .5° (10°)		TITLE: PLUG AND RECEPTACLE HOUSINGS, 4 CIRCUIT .062/(1,57) DIA.		
DRAFT WHERE APPLICABLE MUST REMAIN WITHIN DIMENSIONS		MOLEX INCORPORATED SHEET NO. 3 DATE 8/28/91		
DRAWN BY: JJS		PART NO. SD-2004-*		
APP'D. BY: RS		DRAWG. NO. 68532		
SCALE: 2:1		THIS DRAWING CONTAINS INFORMATION THAT IS PROPRIETARY TO MOLEX INC. AND SHOULD NOT BE USED WITHOUT WRITTEN PERMISSION. CP C		

LTR.	REVISIONS	LTR.	REVISIONS