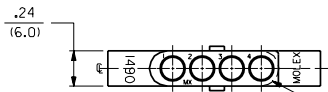


13 12 11 10 9 8 7 6 4 3 2 1

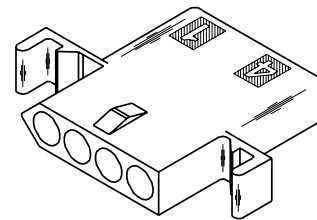
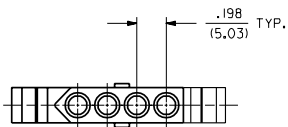
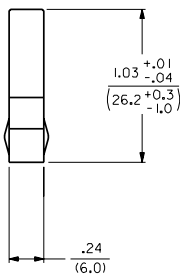
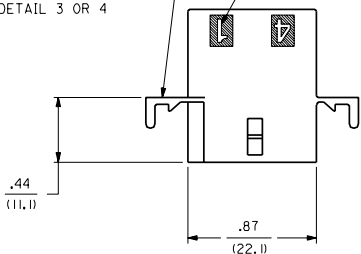
RECEPTACLE



ALTERNATE CONFIGURATION

OPTIONAL MOUNTING EAR (2 PL.)
(STD. MOUNTING EAR SHOWN)
SEE DETAIL 3 OR 4

CIRCUIT I.D. Δ



RECEPTACLE HOUSING

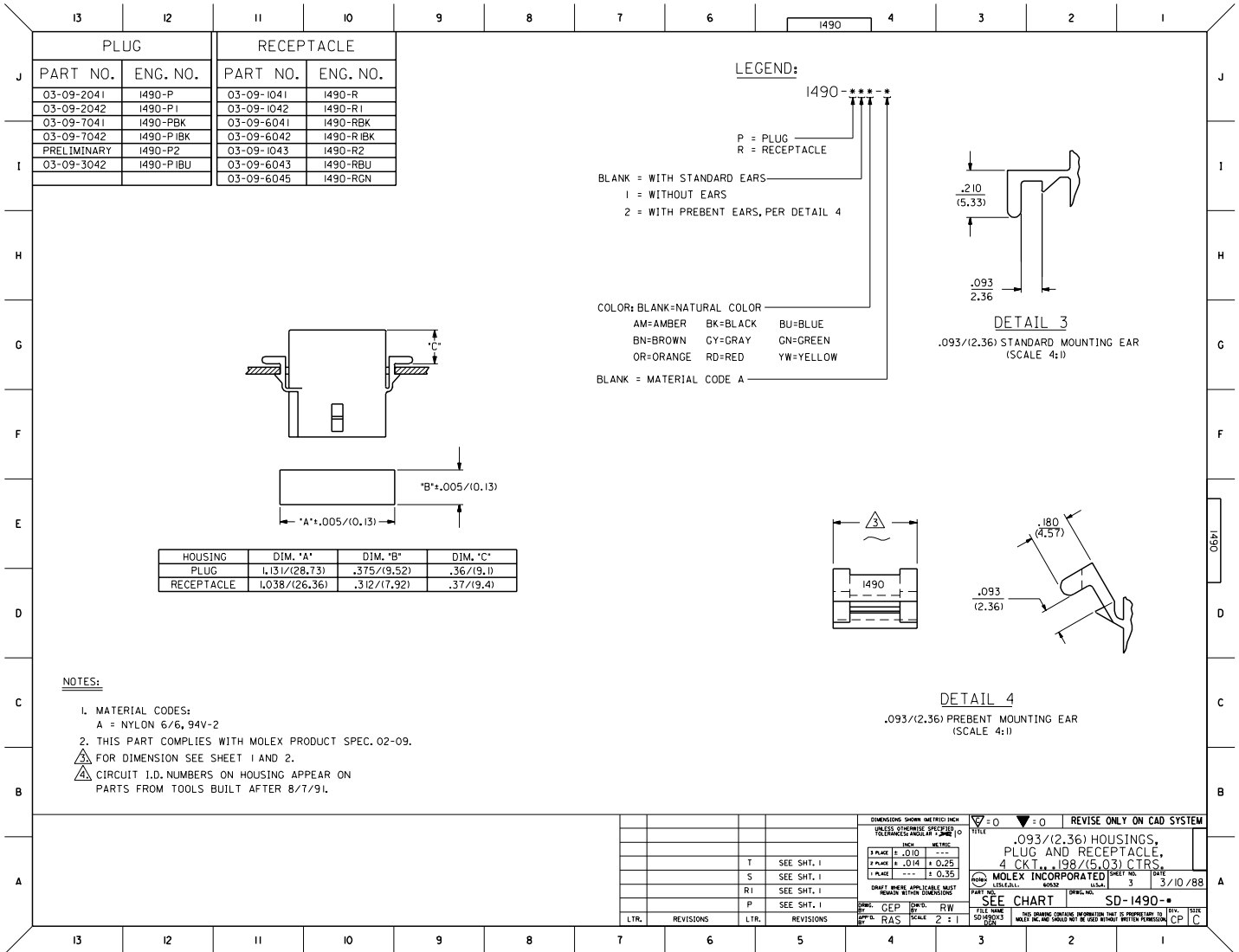
DIMENSIONS SHOWN IN METRIC INCH		UNLESS OTHERWISE SPECIFIED TOLERANCES ANGULAR \pm .50 (10)		REVISIONS		REVISE ONLY ON CAD SYSTEM	
INCH		METRIC		T		SEE SHT. 1	
3 PLACE \pm .010		---		S		SEE SHT. 1	
2 PLACE \pm .014		+ 0.25		R		SEE SHT. 1	
1 PLACE ---		\pm 0.35		P		SEE SHT. 1	
DRAFT WHERE APPLICABLE MUST REMAIN WITHIN DIMENSIONS				LTR.		REVISIONS	
DRWG. NO. SD-1490-2		FILE NAME 50149022.DWG		LTR.		REVISIONS	
DATE 3/10/88		SCALE 2:1		LTR.		REVISIONS	

MOLEX INCORPORATED
1315 E. JEFFERSON AVE.
ROSELAND, ILL. 60552 U.S.A.

SEE CHART SD-1490-2

THIS DRAWING CONTAINS INFORMATION THAT IS PROPRIETARY TO MOLEX INC. AND SHOULD NOT BE USED WITHOUT WRITTEN PERMISSION.

13 12 11 10 9 8 7 6 5 4 3 2 1



PLUG		RECEPTACLE	
PART NO.	ENG. NO.	PART NO.	ENG. NO.
03-09-2041	I490-P	03-09-1041	I490-R
03-09-2042	I490-P1	03-09-1042	I490-R1
03-09-7041	I490-PBK	03-09-6041	I490-RBK
03-09-7042	I490-P1BK	03-09-6042	I490-R1BK
PRELIMINARY	I490-P2	03-09-1043	I490-R2
03-09-3042	I490-P1BU	03-09-6043	I490-RBU
		03-09-6045	I490-RGN

LEGEND:

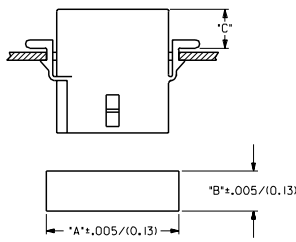
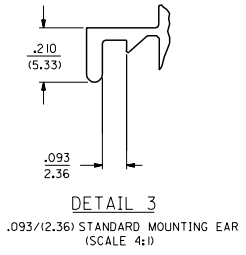
1490-***-***

P = PLUG
R = RECEPTACLE

BLANK = WITH STANDARD EARS
1 = WITHOUT EARS
2 = WITH PREBENT EARS, PER DETAIL 4

COLOR: BLANK=NATURAL COLOR
AM=AMBER BK=BLACK BU=BLUE
BN=BROWN CY=GRAY GN=GREEN
OR=ORANGE RD=RED YW=YELLOW

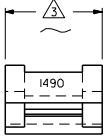
BLANK = MATERIAL CODE A



HOUSING	DIM. "A"	DIM. "B"	DIM. "C"
PLUG	1.131/(28.73)	.375/(9.52)	.36/(9.1)
RECEPTACLE	1.038/(26.36)	.312/(7.92)	.37/(9.4)

NOTES:

- MATERIAL CODES:
A = NYLON 6/6, 94V-2
 - THIS PART COMPLIES WITH MOLEX PRODUCT SPEC. 02-09.
- △ FOR DIMENSION SEE SHEET 1 AND 2.
△ CIRCUIT I.D. NUMBERS ON HOUSING APPEAR ON PARTS FROM TOOLS BUILT AFTER 8/7/91.



DETAIL 4
.093/(2.36) PREBENT MOUNTING EAR
(SCALE 4:1)

UNLESS OTHERWISE SPECIFIED TOLERANCES ARE AS FOLLOWS (IN MILLIMETERS)		REVISE ONLY ON CAD SYSTEM	
FINISH	TOLERANCE	DATE	BY
PLUG	±.010		
RECEPTACLE	±.014		
HOUSING	±.035		

DATE: 3/10/88

MOLEX INCORPORATED

SEE CHART SD-1490

THIS DRAWING CONTAINS INFORMATION THAT IS PROPRIETARY TO MOLEX INC. AND SHOULD NOT BE USED WITHOUT WRITTEN PERMISSION.