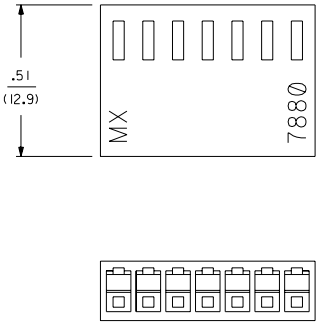
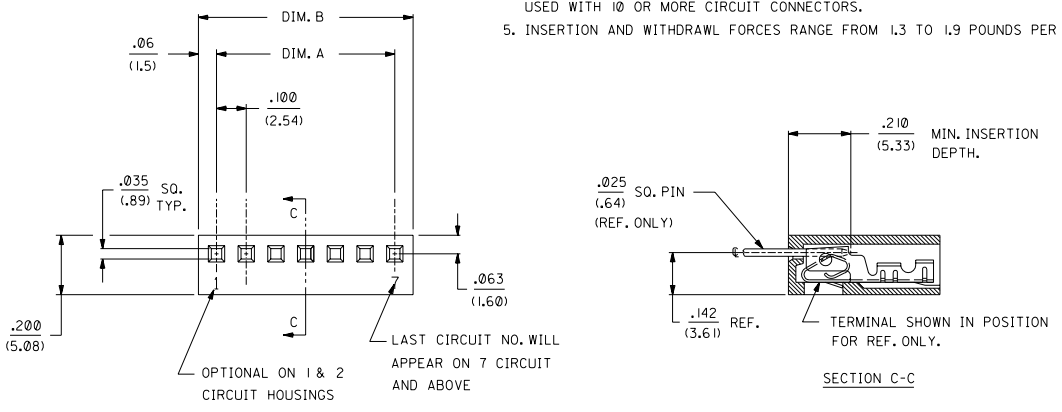


NO. OF CKT'S.	DIM. A	DIM. B
1		.122±.010 (3.10±.25)
2	.100±.004 (2.54±.10)	.222±.010 (5.64±.25)
3	.200±.004 (5.08±.10)	.322±.010 (8.18±.25)
4	.300±.004 (7.62±.10)	.422±.010 (10.72±.25)
5	.400±.004 (10.16±.10)	.522±.010 (13.26±.25)
6	.500±.005 (12.70±.13)	.622±.010 (15.80±.25)
7	.600±.005 (15.24±.13)	.722±.011 (18.34±.28)
8	.700±.005 (17.78±.13)	.822±.011 (20.88±.28)
9	.800±.006 (20.32±.15)	.922±.011 (23.42±.28)
10	.900±.006 (22.86±.15)	1.022±.012 (25.96±.30)
11	1.000±.006 (25.40±.15)	1.122±.012 (28.50±.30)
12	1.100±.006 (27.94±.15)	1.222±.012 (31.04±.30)
13	1.200±.007 (30.48±.18)	1.322±.012 (33.58±.30)
14	1.300±.007 (33.02±.18)	1.422±.013 (36.12±.33)
15	1.400±.011 (35.56±.28)	1.522±.013 (38.66±.33)
16	1.500±.011 (38.10±.28)	1.622±.013 (41.20±.33)
17	1.600±.011 (40.64±.28)	1.722±.013 (43.74±.33)
18	1.700±.011 (43.18±.28)	1.822±.014 (46.28±.36)
19	1.800±.011 (45.72±.28)	1.922±.014 (48.82±.36)
20	1.900±.011 (48.26±.28)	2.022±.014 (51.36±.36)
21	2.000±.012 (50.80±.30)	2.122±.015 (53.90±.38)
22	2.100±.012 (53.34±.30)	2.222±.015 (56.44±.38)
23	2.200±.012 (55.88±.30)	2.322±.015 (58.98±.38)
24	2.300±.012 (58.42±.30)	2.422±.016 (61.52±.41)
25	2.400±.013 (60.96±.33)	2.522±.016 (64.06±.41)
26	2.500±.013 (63.50±.33)	2.622±.016 (66.60±.41)
27	2.600±.013 (66.04±.33)	2.722±.016 (69.14±.41)
28	2.700±.013 (68.58±.33)	2.822±.017 (71.68±.43)

- NOTES:
- DIMENSIONS GIVEN ACROSS CENTERLINES ARE SYMMETRICAL ABOUT THOSE CENTERLINES WITHIN HALF THE TOTAL TOLERANCES.
 - THIS HOUSING FOR USE WITH SHROUDED TERMINAL 7879.
 - THIS PRODUCT COMPLIES WITH MOLEX PRODUCT SPEC. NO. 7879.
 - SPECIAL SUPPORT MAY BE REQUIRED FOR PRINTED CIRCUIT BOARDS USED WITH 10 OR MORE CIRCUIT CONNECTORS.
 - INSERTION AND WITHDRAWAL FORCES RANGE FROM 1.3 TO 1.9 POUNDS PER CIRCUIT.



7880 - N

NO. OF CKTS. _____

VOID CODE
NO. CORRESPONDS TO CKT. NO. VOIDED.
MULT. VOIDS START WITH 51.

OPT. CODE	RAMP	MATERIAL
A	NONE	NYLON, 94V-0, COLOR-WHITE
B	STD. RAMP	NYLON, 94V-0, COLOR-WHITE
C	POL. RAMP	NYLON, 94V-0, COLOR-WHITE

REVISIONS	LTR.	REVISIONS	LTR.	DATE	BY	APP'D.	SCALE	FILE NAME	PART NO.	DRWG. NO.	SHEET NO.	DATE
				12/26/2002	SAMIEC	LENZ			ADD REGRIND UCP2003-1447	MOLEX INCORPORATED	1 OF 2	08/24/88
								TITLE (2.54)X.100 KK, HOUSING FOR SHROUDED CRIMP TYPE TERMINAL		REVISE ONLY ON CAD SYSTEM		
								DIMENSIONS SHOWN METRIC/INCH UNLESS OTHERWISE SPECIFIED TOLERANCES ANGULAR ± 1/2°				
								D PLACE ±.020 F PLACE ±.014 ±.025 H PLACE --- ±.035				
								DRAFT WHERE APPLICABLE MUST REMAIN WITHIN DIMENSIONS				
								MOLEX INCORPORATED LITTLE ROCK, AR 72616 68532				
								SEE CHART				
								NO. DRAWING CONTAINS INFORMATION THAT IS PROPRIETARY TO MOLEX INC. AND SHOULD NOT BE USED WITHOUT WRITTEN PERMISSION.				
								SD-7880				

7880-NA-*			7880-NB-*			7880-NC-*		
PART NO.	ENG. NO.	VOID CKT.	PART NO.	ENG. NO.	VOID CKT.	PART NO.	ENG. NO.	VOID CKT.
10-01-2019	7880-1A		10-11-2013	7880-1B		N/A	7880-1C	
10-01-2029	7880-2A		10-11-2023	7880-2B			7880-2C	
10-01-2039	7880-3A		10-11-2033	7880-3B			7880-3C	
10-01-2049	7880-4A		10-11-2043	7880-4B			7880-4C	
10-01-2059	7880-5A		10-11-2053	7880-5B			7880-5C	
10-01-2069	7880-6A		10-11-2063	7880-6B			7880-6C	
10-01-2079	7880-7A		10-11-2073	7880-7B			7880-7C	
10-01-2089	7880-8A		10-11-2083	7880-8B			7880-8C	
10-01-2099	7880-9A		10-11-2093	7880-9B			7880-9C	
10-01-2109	7880-10A		10-11-2103	7880-10B			7880-10C	
10-01-2119	7880-11A		10-11-2113	7880-11B			7880-11C	
10-01-2129	7880-12A		10-11-2123	7880-12B			7880-12C	
10-01-2139	7880-13A		10-11-2133	7880-13B			7880-13C	
10-01-2149	7880-14A		10-11-2143	7880-14B			7880-14C	
10-01-2159	7880-15A		10-11-2153	7880-15B			7880-15C	
10-01-2169	7880-16A		10-11-2163	7880-16B			7880-16C	
10-01-2179	7880-17A		10-11-2173	7880-17B			7880-17C	
10-01-2189	7880-18A		10-11-2183	7880-18B			7880-18C	
10-01-2199	7880-19A		10-11-2193	7880-19B			7880-19C	
10-01-2209	7880-20A		10-11-2203	7880-20B			7880-20C	
10-01-2219	7880-21A		10-11-2213	7880-21B			7880-21C	
10-01-2229	7880-22A		10-11-2223	7880-22B			7880-22C	
10-01-2239	7880-23A		10-11-2233	7880-23B			7880-23C	
10-01-2249	7880-24A		10-11-2243	7880-24B			7880-24C	
10-01-2259	7880-25A		10-11-2253	7880-25B			7880-25C	
10-01-2269	7880-26A		10-11-2263	7880-26B			7880-26C	
10-01-2279	7880-27A		10-11-2273	7880-27B			7880-27C	
10-01-2289	7880-28A		10-11-2283	7880-28B			7880-28C	
			10-11-2052	7880-5B-2	2			
			10-11-2092	7880-9B-2	2			
			10-11-2105	7880-10B-4	4			

