

4

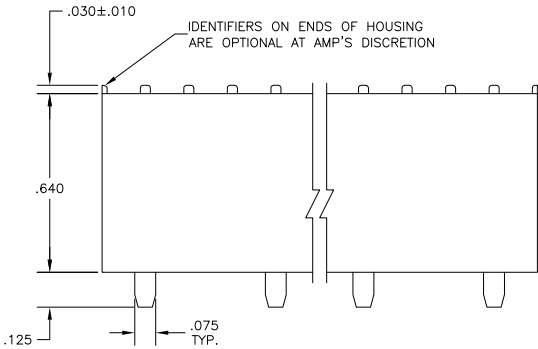
3

2

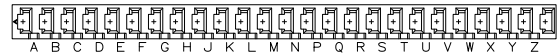
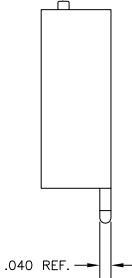
1

THIS DRAWING IS UNPUBLISHED. RELEASED FOR PUBLICATION. ALL RIGHTS RESERVED.

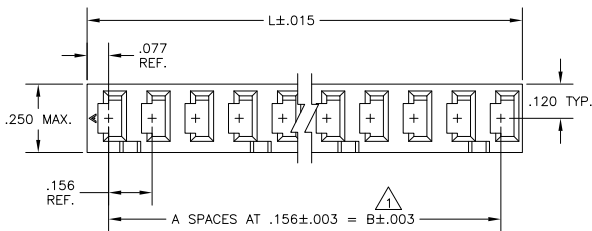
LOC	DIST	REVISIONS			
P	LTR	DESCRIPTION	DATE	BY	APPD
AD	39				
	K2	REVISED PER ECO-11-004820	11MAR11	RK	HMR



LUG LOCATES THAT SIDE OF CAVITY WHICH CONTAINS THE CONTACT LOCKING LEDGE



KEY LOCATIONS (REF ONLY)



- 1 TOLERANCE NON CUMULATIVE
- 2 OBSOLETE PARTS: OBSOLETE CIS STREAMLINING PER D.RENAUD/D.SINISI

1	OBSOLETE	A,C,E,H,K,M,Q,S,U,W,Y	3.900	3.744	24	11	25	2-87159-4
1	OBSOLETE	A,C,E,G,J,L,N,Q,S,U,W,Y	3.744	3.588	23	12	24	2-87159-3
1	OBSOLETE	A,D,G,K,N,R,U,X	3.588	3.432	22	8	23	2-87159-2
1	OBSOLETE	A,C,E,G,J,L,N,Q,S,U,W	3.432	3.276	21	11	22	2-87159-1
1	OBSOLETE	A,D,G,K,N,R,U	3.276	3.120	20	7	21	2-87159-0
1	OBSOLETE	A,C,E,G,J,L,N,Q,S,U	3.120	2.964	19	10	20	2-87159-9
1	OBSOLETE	B,D,F,J,L,N,Q,S	2.964	2.808	18	8	19	2-87159-8
1	OBSOLETE	A,D,F,J,P,S	2.808	2.652	17	6	18	2-87159-7
1	OBSOLETE	A,D,G,K,N,R	2.652	2.496	16	6	17	2-87159-6
1	OBSOLETE	A,C,E,G,J,L,N,Q	2.496	2.340	15	8	16	2-87159-5
1	OBSOLETE	A,D,G,K,N	2.340	2.184	14	5	15	2-87159-4
1	OBSOLETE	A,C,E,G,J,L,N	2.184	2.028	13	7	14	2-87159-3
1	OBSOLETE	A,C,E,G,J,L	1.872	1.716	11	6	12	2-87159-2
1	OBSOLETE	A,D,G,K	1.716	1.560	10	4	11	2-87159-1
1	OBSOLETE	A,C,E,G,J	1.560	1.404	9	5	10	2-87159-0
1	OBSOLETE	A,D,G	1.404	1.248	8	3	9	2-87159-9
1	OBSOLETE	A,C,E,G	1.248	1.092	7	4	8	2-87159-8
1	OBSOLETE	A,C,E	1.092	.936	6	3	7	2-87159-7
1	OBSOLETE	A,C,E	.936	.780	5	3	6	2-87159-6
1	OBSOLETE	A,C	.624	.468	3	2	4	2-87159-5
1	OBSOLETE	A	.468	.312	2	1	3	2-87159-4
1	OBSOLETE	A	.312	.156	1	1	2	2-87159-3
1	OBSOLETE	A,D,J,M	2.028	1.872	12	4	13	2-87159-2
1	OBSOLETE	A,D	.780	.624	4	2	5	2-87159-1
		KEY LOCATIONS	L	B	A	NO OF KEYS	NO OF POS	PART NO

THIS DRAWING IS A CONTROLLED DOCUMENT.

DESIGNED BY: S. SHUEY	DATE: 8-7-93	<p>TE Connectivity</p> <p>HOUSING, MOD I, .156 CL. SINGLE ROW, CRIMP SNAP IN, KEYED</p>	RESTRICTED TO:
DRAWN BY: S. SHUEY	DATE: 8-7-93		
APPROVED BY: S. SHUEY	DATE: 8-7-93		
PRODUCT SPEC: 108-25016	APPLICATION SPEC: 114-25000		SIZE: A2
MATERIAL: FLAME RETARDANT THERMOPLASTIC COLOR-BLACK	FINISH: -	CUSTOMER DRAWING	SCALE: 4:1