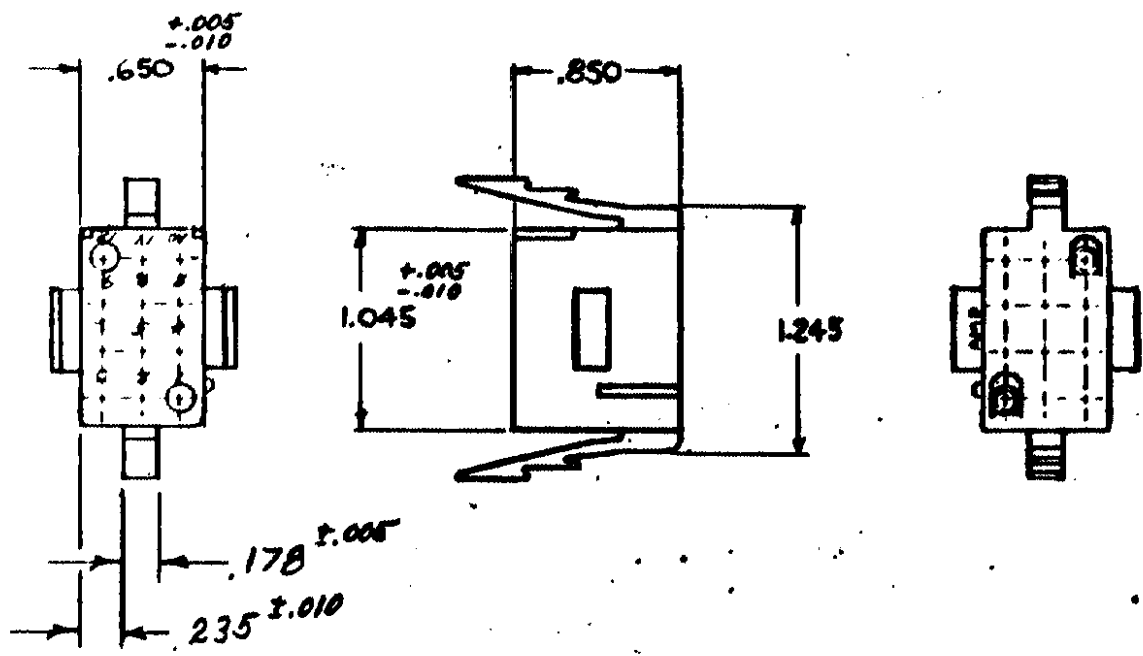


NUMBER 480275



-NOTE-

1- HOUSING TO BE USED WITH MATE-N-LOK SOCKETS.
 2- TO BE USED WITH PIN HOUSING 480278.

HOUSING NO	MATERIAL & COLOR
1-480275-0	NYLON - NATURAL

DIMENSIONS IN INCHES DO NOT SCALE PRINT

M	OBS. 1--1, 1--7 (1--9) PER CM-895	PKC	TB	6-17-67	
L	OBS. 1--2 (1--8 PER CM-758)	PKC	TB	4/2/67	

© 1964 BY AMP INCORPORATED. ALL RIGHTS RESERVED. AMP PRODUCTS COVERED BY PATENTS AND/OR PATENTS PENDING.

CUSTOMER COPY REFERENCE ONLY

MATERIAL AND FINISH
 SEE TABLE



CLASS .086 DIA SOCKET

WIRE — RANGE — INSULATION
 AS NOTED

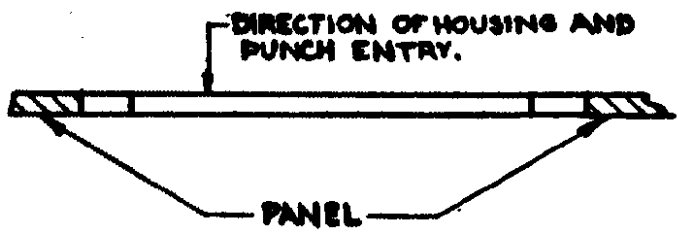
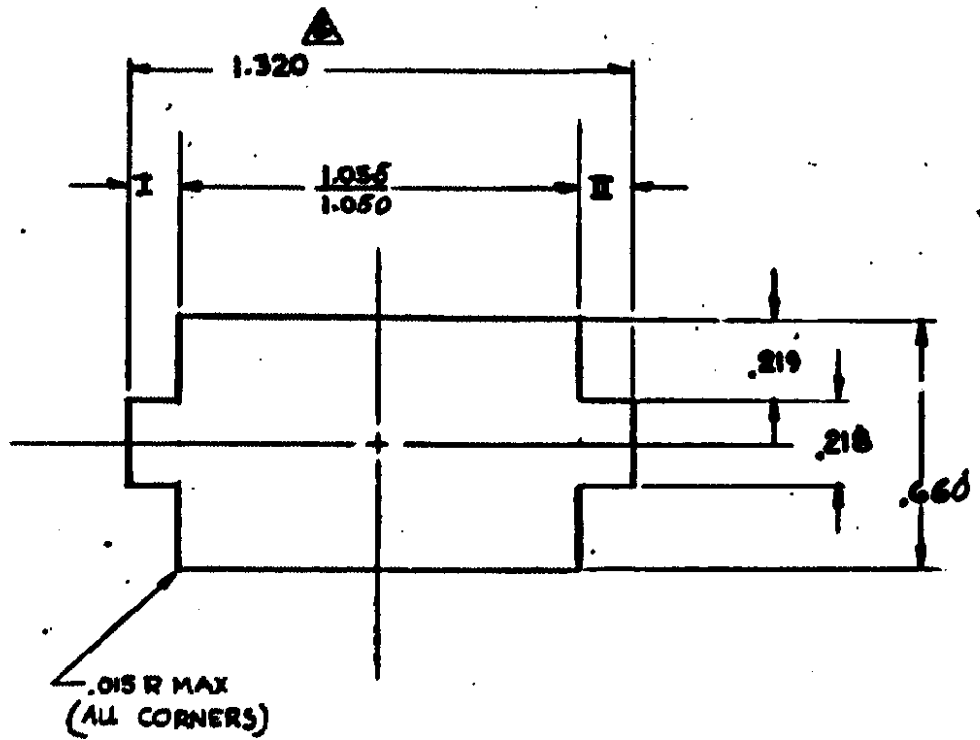
TYPE PANEL MOUNT

TOLERANCE EXCEPT AS NOTED
 ± .010 ± .001

SCALE 1:1
 NO. 480275

NAME 12 CIRCUIT, MATE-N-LOK™ PLUG

SHEET I OF II
NUMBER 480275



- NOTE -

- 1-RECOMMENDED PANEL THICKNESS .025-.068
- 2-BOTH LOCKING LEGS TO BE SQUEEZED TOGETHER AND HOUSING TO BE INSERTED STRAIGHT-IN, AS OPPOSED TO A ROCKING MANNER OF INSERTION
- 3-PANEL MUST BE PUNCHED SO THAT THE HOUSING ENTERS THE PANEL IN THE SAME DIRECTION AS THE PUNCH.
- 4-DIMENSIONS I & II TO BE EQUAL WITHIN .005
- 5-PANEL MUST NOT HAVE ANY MATERIAL (PAINT, PORCELAIN ETC.) APPLIED IN THE MOUNTING HOLE AREA THAT WOULD DECREASE RETENTION OF THE HOUSING IN THE PANEL.
- 6- IF NOTES 3 AND/OR 5 ARE NOT COMPLIED WITH, THE 1.320 DIM. SHOULD BE REDUCED TO 1.300 TO ASSURE PROPER HOUSING RETENTION IN THE PANEL.

DIMENSIONS IN INCHES DO NOT SCALE PRINT

PRINT BY
5
5
5

REVISION RECORD				
LTR	DR	CHK	DATE	

©1964 BY AMP INCORPORATED. ALL RIGHTS RESERVED. AMP PRODUCTS COVERED BY PATENTS AND/OR PATENTS PENDING.

MATERIAL AND FINISH

WIRE — RANGE — INSULATION

TOLERANCE EXCEPT AS NOTED ± .005 ± 1° 0'

SCALE

NAME

CUSTOMER COPY REFERENCE ONLY

AMP AMP INCORPORATED HARRISBURG, PENNA.

CLASS

TYPE

LOC **CM A** NO. SHEET **II** OF **II** REV **M**

480275

FOR 12 CIRCUIT PANEL MOUNT MAT-110™ PLK