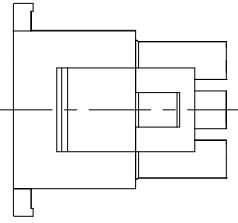
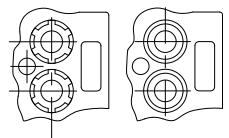
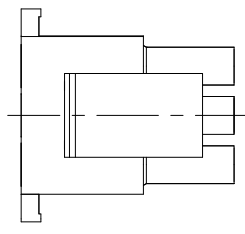


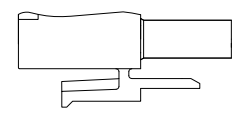
- MATES WITH APPROPRIATE UNIVERSAL MATE-N-LOK™ CAP OR HEADER.
 - SMALL NICKS ARE PERMITTED ON THE CIRCUIT TOWERS WHICH COULD INCREASE THE INITIAL HOUSING MATING FORCE BY UP TO 4.4 NEWTONS [1.0 LBS]. NO INDIVIDUAL NICKED TOWER SHALL INCREASE THIS FORCE BY OVER 2.2 NEWTONS [.5 LBS].
- ▲ DIMENSION INDICATED IS AS MOLDED. ADDITIONAL GROWTH DUE TO SUBSEQUENT MOISTURE ABSORPTION MAY OCCUR.
 ▲ FOUR RIBS EQUALLY SPACED, NO SPECIFIC ORIENTATION, NO RIBS OR SIX RIBS EQUALLY SPACED, NO SPECIFIC ORIENTATION, OPTIONAL.
 ▲ NOT MANUFACTURED IN U.S.
 ▲ UNDERWRITERS RECOGNIZED COMPONENT LOGO AND CSA CERTIFICATION LOGO TO BE LOCATED ONCE ON EACH SIDE OF HOUSING.



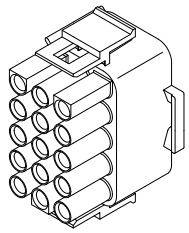
VIEW A-A
350736-4 ONLY



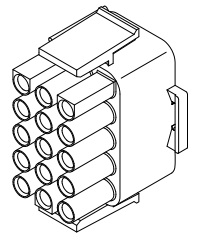
DETAIL A
OPTIONAL CONSTRUCTION



DETAIL B
350736-4 ONLY



350736-4 3-DIMENSIONAL MODEL
NTS



3-DIMENSIONAL MODEL
NTS

33.02	1.300
27.43	1.080
20.32	.800
11.68	.460
0.38	.015
0.13	.005
MM	IN

CONVERSION TABLE
MIL-D-100

BLACK	1-350736-9
GRAY	1-350736-8
BLUE	1-350736-6
GREEN	1-350736-5
YELLOW	1-350736-4
ORANGE	1-350736-3
RED	1-350736-2
BROWN	1-350736-1
▲	350736-4
▲	350736-1
COLOR	PART NUMBER



THIS DRAWING IS A CONTROLLED DOCUMENT.

UNLESS OTHERWISE SPECIFIED:	DIMENSIONS: mm TOLERANCES: FRACTIONS DECIMALS H .010 .010 K .010 .010 M .010 .010 P .010 .010 R .010 .010 S .010 .010 T .010 .010 V .010 .010 W .010 .010 X .010 .010 Y .010 .010 Z .010 .010	FINISH: RA .300 UNLESS OTHERWISE SPECIFIED:	MATERIAL: 94-0	THIS DRAWING IS A CONTROLLED DOCUMENT. DATE: 11/11/11 DRAWING NO: 00779 REV: 2 CUSTOMER DRAWING:	ETE TE Connectivity PLUG, 15 CIRCUIT, UNIVERSAL MATE-N-LOK™ SIZE: 4.1 SHEET: 1 OF 1 REV: V2
-----------------------------	--	--	----------------	--	---