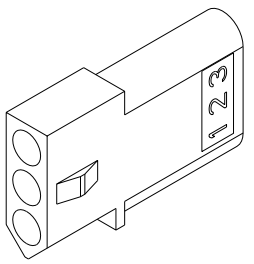
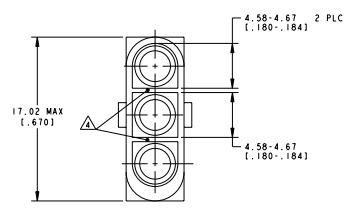
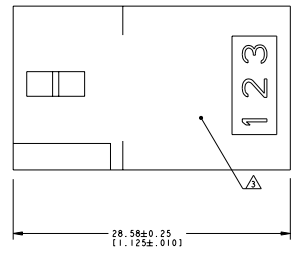
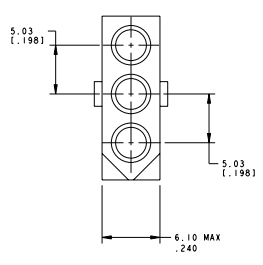


DATE: 04/09/2004
REVISED FOR PRODUCTION
BY: TECH ELECTRONICS CORPORATION, ALL RIGHTS RESERVED

REV	DATE	DESCRIPTION	BY	CHKD	APP
00		REVISED PER ECR-09-012310	BLUNDEN	AND	KR

- △ MATERIAL: NYLON, UL94V-2 (NATURAL).
- 2. MARKING FOR UL AND CSA LOGO SHALL BE LOCATED ON ANY EXTERNAL SURFACE.
- △ AMP LOGO AND CIRCUIT NUMBERS LOCATED IN AREA, EITHER SIDE, SIZE OPTIONAL, FROST BACKGROUND.
- △ WALL THICKNESS TO MEASURE 0.36-0.46 (.014-.018)
- △ MATERIAL: NYLON 4/6, NATURAL.
- △ PRELIMINARY - NOT FOR PRODUCTION.



METRIC

DATE: 04/09/2004	REV: 00	REVISED FOR PRODUCTION	BY: TECH ELECTRONICS CORPORATION
DATE: 04/09/2004	REV: 00	REVISED PER ECR-09-012310	BY: BLUNDEN
DATE: 04/09/2004	REV: 00	REVISED PER ECR-09-012310	BY: AND
DATE: 04/09/2004	REV: 00	REVISED PER ECR-09-012310	BY: KR
DATE: 04/09/2004	REV: 00	REVISED PER ECR-09-012310	BY: KR

DATE: 04/09/2004	REV: 00	REVISED FOR PRODUCTION	BY: TECH ELECTRONICS CORPORATION
DATE: 04/09/2004	REV: 00	REVISED PER ECR-09-012310	BY: BLUNDEN
DATE: 04/09/2004	REV: 00	REVISED PER ECR-09-012310	BY: AND
DATE: 04/09/2004	REV: 00	REVISED PER ECR-09-012310	BY: KR
DATE: 04/09/2004	REV: 00	REVISED PER ECR-09-012310	BY: KR

DATE: 04/09/2004	REV: 00	REVISED FOR PRODUCTION	BY: TECH ELECTRONICS CORPORATION
DATE: 04/09/2004	REV: 00	REVISED PER ECR-09-012310	BY: BLUNDEN
DATE: 04/09/2004	REV: 00	REVISED PER ECR-09-012310	BY: AND
DATE: 04/09/2004	REV: 00	REVISED PER ECR-09-012310	BY: KR
DATE: 04/09/2004	REV: 00	REVISED PER ECR-09-012310	BY: KR

DATE: 04/09/2004	REV: 00	REVISED FOR PRODUCTION	BY: TECH ELECTRONICS CORPORATION
DATE: 04/09/2004	REV: 00	REVISED PER ECR-09-012310	BY: BLUNDEN
DATE: 04/09/2004	REV: 00	REVISED PER ECR-09-012310	BY: AND
DATE: 04/09/2004	REV: 00	REVISED PER ECR-09-012310	BY: KR
DATE: 04/09/2004	REV: 00	REVISED PER ECR-09-012310	BY: KR

DATE: 04/09/2004	REV: 00	REVISED FOR PRODUCTION	BY: TECH ELECTRONICS CORPORATION
DATE: 04/09/2004	REV: 00	REVISED PER ECR-09-012310	BY: BLUNDEN
DATE: 04/09/2004	REV: 00	REVISED PER ECR-09-012310	BY: AND
DATE: 04/09/2004	REV: 00	REVISED PER ECR-09-012310	BY: KR
DATE: 04/09/2004	REV: 00	REVISED PER ECR-09-012310	BY: KR

△	770070-2
△	770070-1
△	770070-1

AMP 985 NY 200200
PLATEWHEEL DRAWING