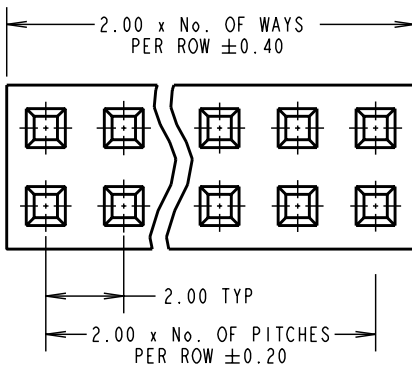


# Customer Information Sheet

DRAWING No.: M22-302XX00 SHEET 2 OF 2 IF IN DOUBT - ASK © NOT TO SCALE THIRD ANGLE PROJECTION ALL DIMENSIONS IN mm



**NOTES:**

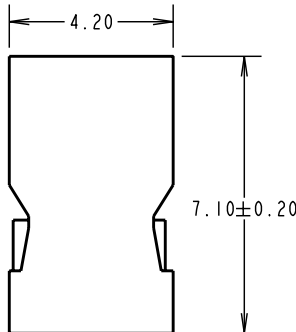
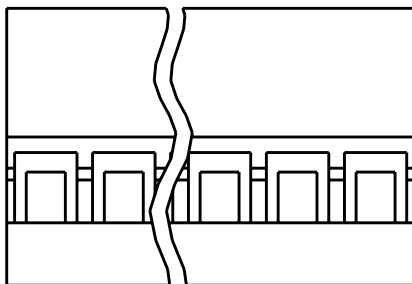
1. TO BE USED WITH CRIMP CONTACTS M22-30400XX (REELED) OR M22-30500XX (LOOSE).
2. ALL TOLERANCES ARE  $\pm 0.10$  UNLESS OTHERWISE STATED.

**SPECIFICATION:**

**MATERIAL**  
 MOULDING = NYLON 66 UL94V-2, BLACK

**ELECTRICAL:**  
 CURRENT RATING = 2A AC, DC  
 VOLTAGE RATING = 250V AC MAX  
 CONTACT RESISTANCE (INITIAL) = 10 MILLIOHMS MAX  
 CONTACT RESISTANCE (AFTER CONDITIONING) = 20 MILLIOHMS MAX  
 DIELECTRIC WITHSTANDING VOLTAGE = 1500V AC FOR 1 MINUTE  
 INSULATION RESISTANCE = 5000 MEGOHMS MIN

**ENVIRONMENTAL:**  
 OPERATING TEMPERATURE =  $-40^{\circ}\text{C}$  TO  $+105^{\circ}\text{C}$



ORDER CODE:  
**M22-302XX00**

No. OF WAYS PER ROW:

02 TO 40

JMB	9	16.09.05	8741
NAME	ISS.	DATE	C/NOTE
APPROVED:		R. ADDE	
CHECKED:		M.G.PLESTED	
DRAWN:		A. LIOTTA	
CUSTOMER REF.:			
ASSEMBLY DRG:			

**HARWIN**

HARWIN USA  
 TEL: 603 893 5376  
 FAX: 603 893 5396  
 mis@harwin.com

HARWIN Europe (UK)  
 TEL: 023 9231 4545  
 FAX: 023 9231 4590  
 mis@harwin.co.uk

HARWIN Asia  
 TEL: +65 6 779 4909  
 FAX: +65 6 779 3868  
 mis@harwin.com.sg

THIS DRAWING AND ANY INFORMATION OR DESCRIPTIVE MATTER SET OUT HEREON ARE CONFIDENTIAL AND COPYRIGHT PROPERTY OF THE HARWIN GROUP AND MUST NOT BE DISCLOSED, LOANED, COPIED OR USED FOR MANUFACTURING, TENDERING OR FOR ANY OTHER PURPOSE WITHOUT THEIR WRITTEN PERMISSION.

**TOLERANCES**  
~~X =  $\pm 1\text{mm}$~~   
~~X.X =  $\pm 0.25\text{mm}$~~   
~~X.XX =  $\pm 0.10\text{mm}$~~   
~~X.XXX =  $\pm 0.01\text{mm}$~~   
 ANGLES =  $\pm 5^{\circ}$   
 UNLESS STATED

**MATERIAL:**  
 SEE ABOVE

**FINISH:**  
 SEE ABOVE

**S/AREA:**  
 mm<sup>2</sup>

**TITLE:**  
 2.00mm DIL CRIMP SOCKET HOUSING

**DRAWING NUMBER:**  
**M22-302XX00**

SHT  
 2  
 OF  
 2