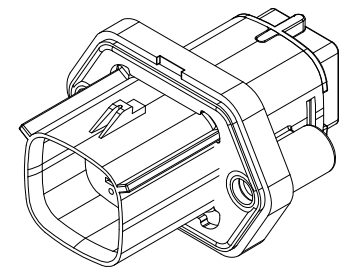
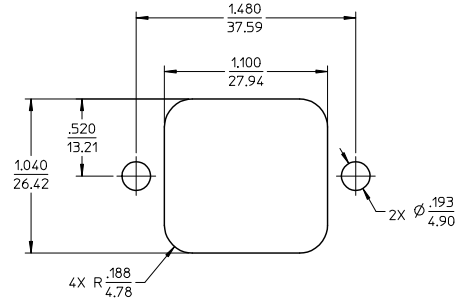
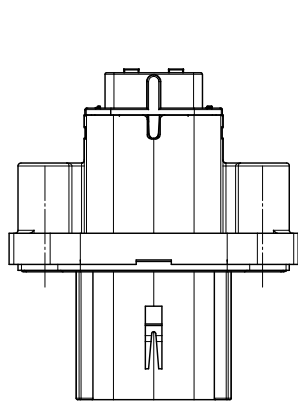
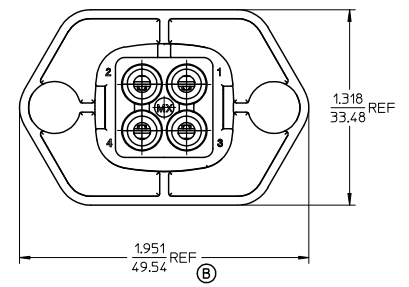
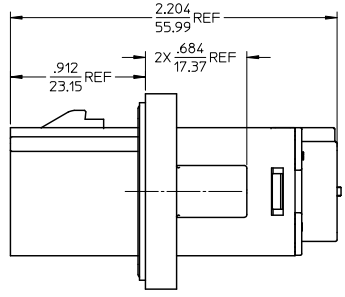
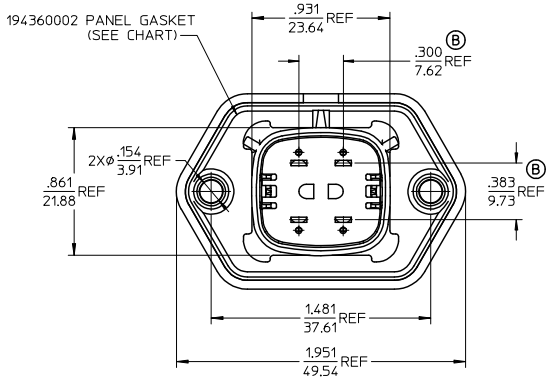


13 12 11 10 9 8 7 6 5 4 3 2 1



RECOMMENDED PANEL MOUNT  
OPENING, MAXIMUM PANEL  
THICKNESS .080/2.03



- NOTES:
- MATERIALS:  
HOUSING: POLYESTER (PBT), GLASS FILLED, UL94 V-0. COLOR: BLACK.  
GASKET MATERIAL: SILICONE RUBBER. COLOR: BLACK
  - PRODUCT SPECIFICATION: PS-19436-001
  - PACKAGING SPECIFICATION: PK-19436-001.
  - USE WITH MALE CRIMP TERMINAL SERIES 19431.
  - MATES WITH 19432 SERIES RECEPTACLE ASSEMBLIES.
  - RECOMMENDED MOUNTING HARDWARE: (2)#10 X .62/18.9 LONG PLASTIC THREAD CUTTING SCREWS. RECOMMENDED TORQUE 15-17 IN-LBS. SUGGESTED SOURCE: ITW SHAKEPROOF INDUSTRIAL BOSSCREW OR EQUIVALENT.
  - ASSEMBLY IS ROHS COMPLIANT.

19436-0414	8	NO
19436-0413	12-10	
19436-0412	8	YES
19436-0411	12-10	
MATERIAL NUMBER	WIRE AWG	PANEL GASKET

REVISED NOTES & UPDATED DIMS EC NO. WNA2010-0276 DRAWN BY: DMYRICK CHECKED BY: JPAWLICKI APPROVED BY: DTITUS	QUALITY SYMBOLS	GENERAL TOLERANCES (UNLESS SPECIFIED)	DIMENSION STYLE	SCALE	DESIGN UNITS	THIRD ANGLE PROJECTION
	▽=0 ▽=0	4 PLACES ± .005 ± .005 3 PLACES ± .005 ± .015 2 PLACES ± 0.38 ± .005 1 PLACE ± .005 ± .005 ANGULAR ± 1°	IN/MM DATE: 2007/4/23 DATE: 2007/4/23 DATE: 2009/10/22	2:1	INCH	4 WAY SEALED PLUG PANEL MOUNT ASSEMBLY, 12-10 & 8 AWG
	DRAFT WHERE APPLICABLE MUST REMAIN WITHIN DIMENSIONS	SEE CHART	MATERIAL NO.	DOCUMENT NO.	SHEET NO.	
					1 OF 1	

12 11 10 9 8 7 6 5 4 3 2 1