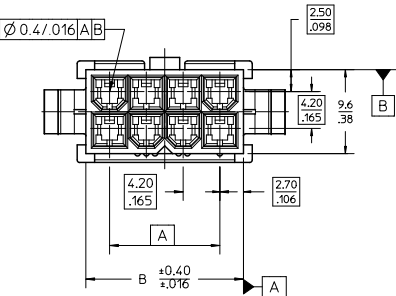
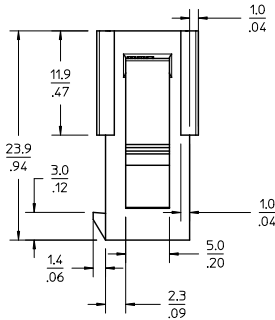
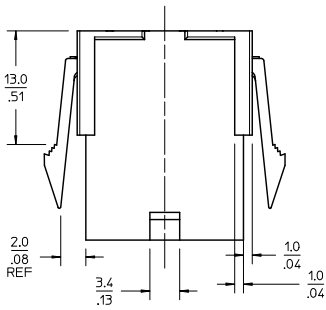
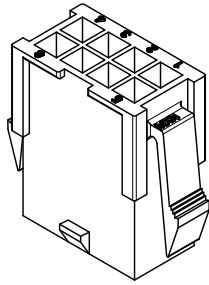
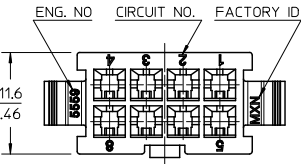
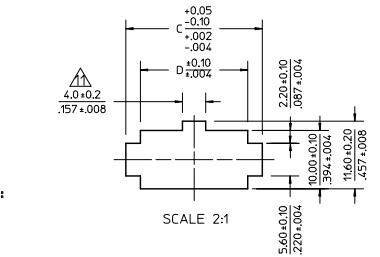
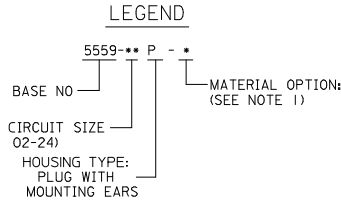


13 12 11 10 9 8 7 6 5 4 3 2 1



- NOTES:
 1) MATERIAL:
 BLANK = NYLON 6/6, 94V-2, COLOR: NATURAL.
 BL = NYLON 6/6, 94V-2, COLOR: BLACK.
 BU = NYLON 6/6, 94V-2, COLOR: BLUE.
 RE = NYLON 6/6, 94V-2, COLOR: RED.
 210 = NYLON 6/6, 94V-0, COLOR: NATURAL.
 2) FINISH: NOT APPLICABLE
 3) PRODUCT SPECIFICATION: PS-5556-001
 4) PACKAGING: BULK
 5) PART MATES WITH MOLEX RECEPTACLE #5557.
 6) PART TO BE USED WITH MOLEX MALE TERMINAL #5558.
 7) PART IS NOT DESIGNED FOR CURRENT SHARING.
 8) CONNECTORS ARE NOT TO BE MATED OR UNMATED WHILE CIRCUITS ARE LIVE.
 9) WIRES ARE TO BE DRESSED IN SUCH A MANNER TO ALLOW THE TERMINALS TO FLOAT FREELY IN THE POCKET.
 10) PART CONFORMS TO CLASS 'B' REQUIREMENTS OF COSMETIC SPECIFICATION PS-45499-002 WITH THE EXCEPTION OF DISCOLORATION, FLASH AND SINK MEET CLASS 'C' REQUIREMENTS.
 ⚠️ ON 2 CIRCUITS PARTS THIS DIMENSION IS ALLOWABLE UP TO 'D' DIMENSION.
 ⚠️ PANEL HOLE TO BE PUNCHED OUT IN THE SAME DIRECTION AS INSERTION INTO THE PANEL.



RECOMMENDED PANEL HOLE DIMENSIONS
 (THICKNESS : 0.8-2.0(.032-.079))

52.1/2.051	51.0/2.244	51.6/2.031	46.2/1.819	24
47.9/1.886	52.8/2.079	47.4/1.866	42.0/1.654	22
43.7/1.720	48.6/1.915	43.2/1.701	37.8/1.488	20
39.5/1.555	44.4/1.748	39.0/1.535	33.6/1.323	18
35.3/1.390	40.2/1.583	34.8/1.370	29.4/1.158	16
31.1/1.224	36.0/1.417	30.6/1.205	25.2/992	14
26.8/1.055	31.8/1.252	26.4/1.039	21.0/827	12
22.6/890	27.6/1.087	22.2/874	16.8/661	10
18.4/724	23.4/921	18.0/709	12.6/496	8
14.2/559	19.2/756	13.8/543	8.4/331	6
10.0/394	15.0/591	9.6/378	4.2/165	4
5.8/228	10.8/425	5.4/213	—	2
				A
				C
				D
				E
				F
				G
				H
				I
				J

REMOVED -04P-RE EC NO: UCP200-2477 DRAWN: JAGUILAR 2010/04/09 CHKD: BELL 2010/08/26 APPR: SMITH 2010/08/27	QUALITY SYMBOLS □=0 ▽=0 ▽=0	GENERAL TOLERANCES (UNLESS SPECIFIED):	DIMENSION STYLE	SCALE	DESIGN UNITS	THIRD ANGLE PROJECTION	
		mm	MM/IN	3:1	METRIC	⊙	
		4 PLACES ±.005 ±.012	DRAWN BY H. HIRAMOTO 1988/10/14	DATE	TITLE	NEW MINI FIT CONNECTOR CRIMP PIN HOUSING	
		3 PLACES ±.012 ±.016	CHECKED BY Y. YAMADA 1988/10/21	DATE			
2 PLACES ±.016 ±.020	APPROVED BY M. ENOMOTO 1988/10/24	DATE					
1 PLACE ±.020 ±.025							
ANGULAR ± 3°							
DRAFT WHERE APPLICABLE MUST REMAIN WITHIN DIMENSIONS	SEE CHART			SD-5559-NP			
				MATERIAL NO. DOCUMENT NO.			
				SHEET NO. 1 OF 2			

1b_frame_C.P. AM.T Rev. F 2009/06/18 12 11 10 9 8 7 6 5 4 3 2 1

