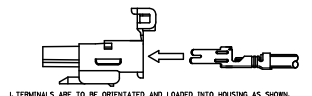
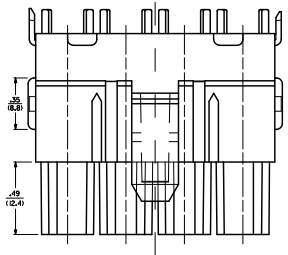
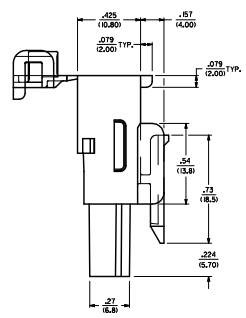
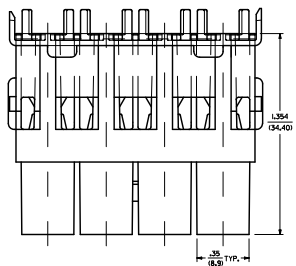
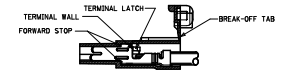


ITEM NUMBER	CIRCUIT SIZE	"A"
42816-0312	2	12.7
42816-0412	3	15.1
42816-0512	4	25.4
42816-0612	5	31.7
42816-0612	6	38.1

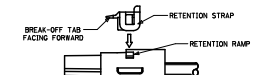
LEGEND:  
42816 - 1 2  
CIRCUIT SIZE  
428-060  
T.P.A. OPTION  
2 - WITH T.P.A.



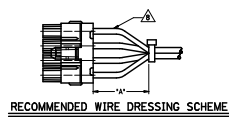
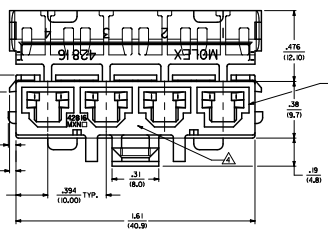
1. TERMINALS ARE TO BE ORIENTATED AND LOADED INTO HOUSING AS SHOWN.



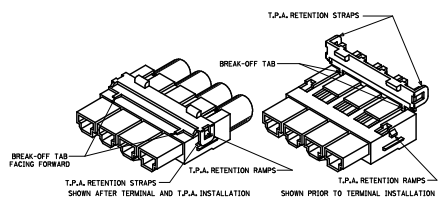
2. TERMINALS ARE LOADED WHEN SEATED AGAINST FORWARD STOP AND TERMINAL LATCHES ARE SHIPPED BEHIND TERMINAL WALLS. RETENTION FORCE AT THIS STAGE = 0.5 Kg.



3. AFTER TERMINALS ARE LOADED INTO HOUSING, T.P.A. IS TO BE BROKEN OFF, ORIENTATED AND INSTALLED IN THE DIRECTION SHOWN UNTIL THE RETENTION STRAPS SNAP OVER THE RETENTION RAMP. THIS PRODUCT MUST NEVER BE USED WITHOUT THE INSTALLATION OF THE T.P.A.



RECOMMENDED WIRE DRESSING SCHEME



- NOTES**
- 1. POLYESTER, PET, UL, 94V-0, COLOR MOLDED BLACK.
  - 2. PART IS FOR USE WITH FEMALE CRIMP TERMINAL \*42816.
  - 3. PART IS DESIGNED IN METRIC.
  - 4. NO CORE-OUTS UNDER LATCH ON 2, 4 & 6 CIRCUIT PARTS.
  - 5. PART MATES WITH MINI-FIT SR PLUG 42816-\*\*\*2.
  - 6. ITEM NUMBERS THAT ARE PRECEDED BY AN "X" ARE NOT AVAILABLE.
  - 7. DUE TO THE BREAKAWAY DESIGN OF THE T.P.A. COVER, A FEM MAY HAVE PREMATURELY SEPARATED FROM THEIR HOUSINGS DURING SHIPMENT, IF A HOUSING IS MISSING A T.P.A. COVER, IT CAN BE FOUND IN THE SHIPPING CONTAINER.
  - 8. EACH WIRE MUST BE DRESSED SUCH THAT THE TERMINAL MAINTAINS ITS FREE FLOAT WITHIN THE HOUSING. SEE CHART FOR RECOMMENDED CABLE TIE PLACEMENT.
  - 9. FOR PACKAGING INFORMATION SEE PK-42816-001.
- THIS PRODUCT MUST NEVER BE USED WITHOUT THE T.P.A.**

QUALITY SYMBOLS		GENERAL TOLERANCES (UNLESS SPECIFIED)		DIMENSION STYLE		SCALE		DESIGN/STANDARD		THIRD ANGLE PROJECTION	
SYMBOL	DESCRIPTION	mm	INCH	IN/MM	DATE	DATE	DATE	DATE	DATE	DATE	DATE
▽=0	4 PLACES ±0.05	±0.05	±0.002	4:1	2010/06/16	2010/06/16	2010/06/16	2010/06/16	2010/06/16	2010/06/16	2010/06/16
▽=0.05	2 PLACES ±0.25	±0.25	±0.010	4:1	2010/06/16	2010/06/16	2010/06/16	2010/06/16	2010/06/16	2010/06/16	2010/06/16
▽=0.1	1 PLACE ±0.40	±0.40	±0.016	4:1	2010/06/16	2010/06/16	2010/06/16	2010/06/16	2010/06/16	2010/06/16	2010/06/16
▽=0.2	ANGULAR ±1/2°	±1/2°	±0.008	4:1	2010/06/16	2010/06/16	2010/06/16	2010/06/16	2010/06/16	2010/06/16	2010/06/16
DRAFT WHERE APPLICABLE		SEE CHART		MATERIAL NO.		DOCUMENT NO.		SHEET NO.		1 OF 1	
MUST REMAIN WITHIN DIMENSIONS		THIS DRAWING CONTAINS INFORMATION THAT IS PROPRIETARY TO MOLEX INCORPORATED AND SHOULD NOT BE USED WITHOUT WRITTEN PERMISSION		DRAWN BY		CHECKED BY		APPROVED BY		DATE	
				MELHAG		MKIPPER		P-SMITH		2010/06/16	
				SD-42816-***2		MOLEX INCORPORATED					