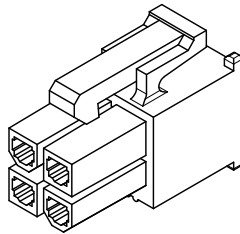
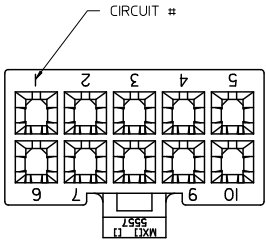


13 12 11 10 9 8 7 6 5 4 3 2 1

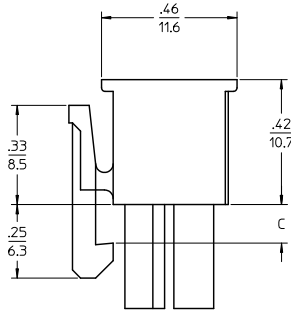
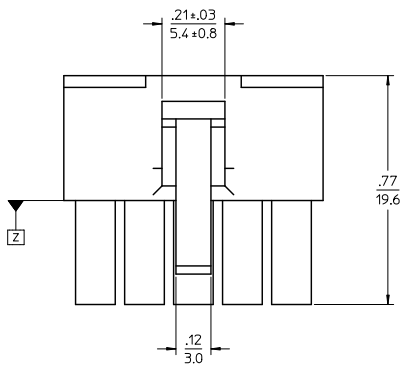


4 CKT SHOWN

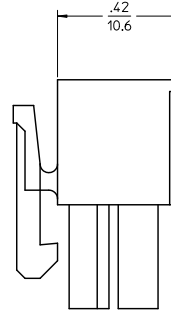
NOTES:

- 1) MATERIAL:
 - *BLANK* = NYLON 6/6, 94V-2, COLOR: NATURAL.
 - *BL* = NYLON 6/6, 94V-2, COLOR: BLACK.
 - *RE* = NYLON 6/6, 94V-2, COLOR: RED.
 - *YE* = NYLON 6/6, 94V-2, COLOR: YELLOW.
 - *210* = NYLON 6/6, 94V-0, COLOR: NATURAL.
 - *225* = NYLON 6, UL94V-0, COLOR: BLACK, IEC 60335-1, 4th EDITION GLOW WIRE CAPABLE.
 - *225N* = NYLON 6, UL94V-0, COLOR: WHITE, IEC 60335-1, 4th EDITION GLOW WIRE CAPABLE.
 - *400* = NYLON 6/6, 94V-0, COLOR: BLACK.
- 2) FINISH: NOT APPLICABLE
- 3) PRODUCT SPECIFICATION: PS-5556-001
- 4) PACKAGING: BULK
- 5) PART MATES WITH MOLEX PLUG #5559 AND HEADERS #5566, #5569.
- 6) PART TO BE USED WITH MOLEX FEMALE TERMINAL #5556.
- 7) PART IS NOT DESIGNED FOR CURRENT SHARING.
- 8) CONNECTORS ARE NOT TO BE MATED OR UNMATED WHILE CIRCUITS ARE LIVE.
- 9) WIRES ARE TO BE DRESSED IN SUCH A MANNER TO ALLOW THE TERMINALS TO FLOAT FREELY IN THE POCKET.
- 10) PART CONFORMS TO CLASS 'B' REQUIREMENTS OF COSMETIC SPECIFICATION PS-45499-002 WITH THE EXCEPTION OF DISCOLORATION, FLASH AND SINK MEET CLASS 'C' REQUIREMENTS.

▲ TO BE MEASURED AT SURFACE □

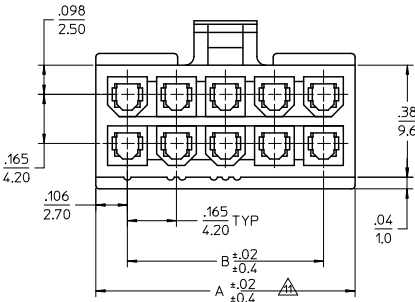


4-24 CKT



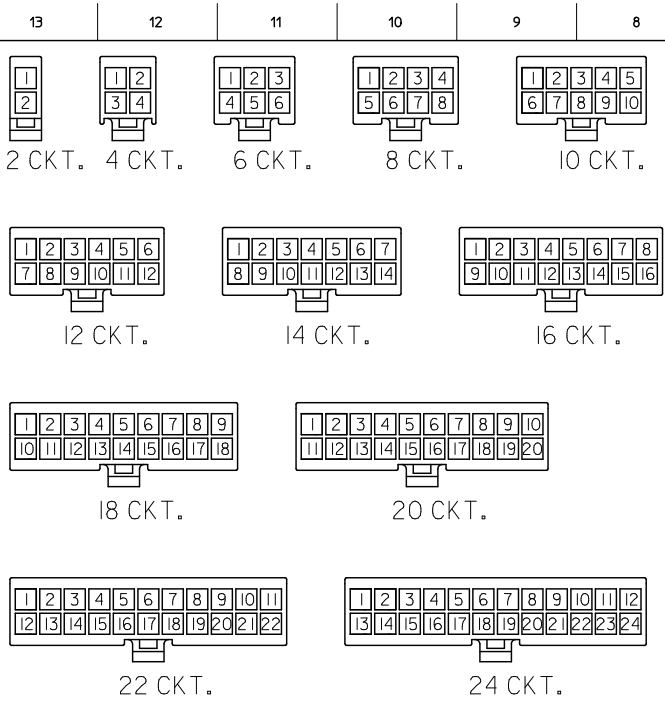
2 CKT ONLY

2.031/(51.60)	1.819/(46.20)		24
1.866/(47.40)	1.654/(42.00)		22
1.701/(43.20)	1.488/(37.80)	.142/	20
1.535/(39.00)	1.323/(33.60)	(3.60)	18
1.370/(34.80)	1.157/(29.40)		16
1.205/(30.60)	0.992/(25.20)		14
1.039/(26.40)	0.827/(21.00)		12
0.874/(22.20)	0.661/(16.80)		10
0.709/(18.00)	0.496/(12.60)	.129/	8
0.543/(13.80)	0.331/(8.40)	(3.30)	6
0.378/(9.60)	0.165/(4.20)		4
0.213/(5.40)			2
A	B	C	NO. OF CKTS.

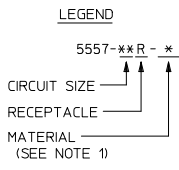


UPDATED TABLE EC NO. UCP2011-2362 DRWN: JAGUILAR 2011/02/09 CHKD: BELL 2011/02/09 APPR: SMITH 2011/02/21 REV	QUALITY SYMBOLS	GENERAL TOLERANCES (UNLESS SPECIFIED)	DIMENSION STYLE	SCALE	DESIGN UNITS	THIRD ANGLE PROJECTION
	▽=0	mm INCH	IN/MM	4:1	METRIC	
	▽=0	4 PLACES ±.005 ±.005	DRAWN BY DATE			
	▽=0	3 PLACES ±.010 ±.010	S. MOCHIZUKI '90/02/22	TITLE		
	2 PLACES ±.025 ±.015	APPROVED BY DATE	NEW MINI FIT CONN REC. HOUSING			
	1 PLACE ±.038 ±.015	M. FUKUSHIMA '97/01/08	MOLEX INCORPORATED			
	ANGULAR ± 3°	FSMITH 2011/02/21	SD-5557-003			
		MATERIAL NO. DOCUMENT NO.	SEE CHART			
			DRAFT WHERE APPLICABLE MUST REMAIN WITHIN DIMENSIONS			
			THIS DRAWING CONTAINS INFORMATION THAT IS PROPRIETARY TO MOLEX INCORPORATED AND SHOULD NOT BE USED WITHOUT WRITTEN PERMISSION			
			SHEET NO. 1 OF 2			

12 11 10 9 8 7 6 5 4 3 2 1



CIRCUIT SIZE LAYOUT
(NOT TO SCALE)



V-0 GLOW WIRE (BLACK)			V-0 GLOW WIRE (WHITE)		
EDP. NO.	ENG. NO.	NO. OF CKTS.	EDP. NO.	ENG. NO.	NO. OF CKTS.
50-36-1667	5557-24R-225	24	-	-	24
26-01-3167	5557-22R-225	22	-	-	22
* 26-01-3166	5557-20R-225	20	-	-	20
50-36-1668	5557-18R-225	18	-	-	18
50-36-1669	5557-16R-225	16	-	-	16
50-36-2293	5557-14R-225	14	-	-	14
50-36-1674	5557-12R-225	12	-	-	12
50-36-1671	5557-10R-225	10	-	-	10
50-36-1713	5557-08R-225	8	-	-	8
50-36-1672	5557-06R-225	6	26-01-3176	5557-06R-225N	6
50-30-4461	5557-04R-225	4	50-36-2301	5557-04R-225N	4
50-36-1673	5557-02R-225	2	-	-	2

V-0 (BLACK)			V-0 (NATURAL)		
EDP. NO.	ENG. NO.	NO. OF CKTS.	EDP. NO.	ENG. NO.	NO. OF CKTS.
* 39-03-9242	5557-24R-400	24	39-01-2245	5557-24R-210	24
* 39-03-9222	5557-22R-400	22	39-01-2225	5557-22R-210	22
* 39-03-9202	5557-20R-400	20	39-01-2205	5557-20R-210	20
* 39-03-9182	5557-18R-400	18	39-01-2185	5557-18R-210	18
* 39-03-9162	5557-16R-400	16	39-01-2165	5557-16R-210	16
* 39-03-9142	5557-14R-400	14	39-01-2145	5557-14R-210	14
* 39-03-9122	5557-12R-400	12	39-01-2125	5557-12R-210	12
* 39-03-9102	5557-10R-400	10	39-01-2105	5557-10R-210	10
* 39-03-9082	5557-08R-400	8	39-01-2085	5557-08R-210	8
* 39-03-9062	5557-06R-400	6	39-01-2065	5557-06R-210	6
39-03-9042	5557-04R-400	4	39-01-2045	5557-04R-210	4
39-03-9022	5557-02R-400	2	39-01-2025	5557-02R-210	2

* = CONSULT FACTORY FOR AVAILABILITY.

V-2 (YELLOW)			V-2 (RED)			V-2 (BLACK)			V-2 (NATURAL)		
EDP. NO.	ENG. NO.	NO. OF CKTS.	EDP. NO.	ENG. NO.	NO. OF CKTS.	EDP. NO.	ENG. NO.	NO. OF CKTS.	EDP. NO.	ENG. NO.	NO. OF CKTS.
		24			24	* 39-01-3245	5557-24R-BL	24	39-01-2240	5557-24R	24
		22			22	39-01-3225	5557-22R-BL	22	39-01-2220	5557-22R	22
		20			20	* 39-01-3205	5557-20R-BL	20	39-01-2200	5557-20R	20
		18			18	* 39-01-3185	5557-18R-BL	18	39-01-2180	5557-18R	18
		16			16	* 39-01-3165	5557-16R-BL	16	39-01-2160	5557-16R	16
		14			14	39-01-3145	5557-14R-BL	14	39-01-2140	5557-14R	14
		12			12	39-01-3125	5557-12R-BL	12	39-01-2120	5557-12R	12
		10			10	39-01-3105	5557-10R-BL	10	39-01-2100	5557-10R	10
		8			8	39-01-3085	5557-08R-BL	8	39-01-2080	5557-08R	8
* 39-02-8061	5557-06R-YE	6			6	39-01-3065	5557-06R-BL	6	39-01-2060	5557-06R	6
* 39-02-8041	5557-04R-YE	4	* 39-02-8040	5557-04R-RE	4	39-01-3045	5557-04R-BL	4	39-01-2040	5557-04R	4
* 39-02-8021	5557-02R-YE	2			2	39-01-3025	5557-02R-BL	2	39-01-2020	5557-02R	2

QUALITY SYMBOLS

GENERAL TOLERANCES (UNLESS SPECIFIED)

4 PLACES	± .01	± .01
3 PLACES	± .015	± .015
2 PLACES	± 0.25	± .015
1 PLACE	± 0.38	± .015

ANGULAR ± 3°

DRAFT WHERE APPLICABLE MUST REMAIN WITHIN DIMENSIONS

DIMENSION STYLE IN/MM

SCALE

DESIGN UNITS METRIC

THIRD ANGLE PROJECTION

DRAWN BY S. MOCHI ZUKI DATE '90/02/22

CHECKED BY M. FUKUSHIMA DATE '97/01/08

APPROVED BY F. SMITH DATE 2011/02/21

MATERIAL NO. DOCUMENT NO. SD-5557-003

SHEET NO. 2 OF 2

NEW MINI FIT CONN REC. HOUSING

MOLEX INCORPORATED

THIS DRAWING CONTAINS INFORMATION THAT IS PROPRIETARY TO MOLEX INCORPORATED AND SHOULD NOT BE USED WITHOUT WRITTEN PERMISSION