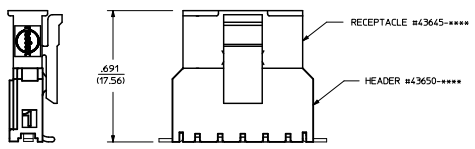


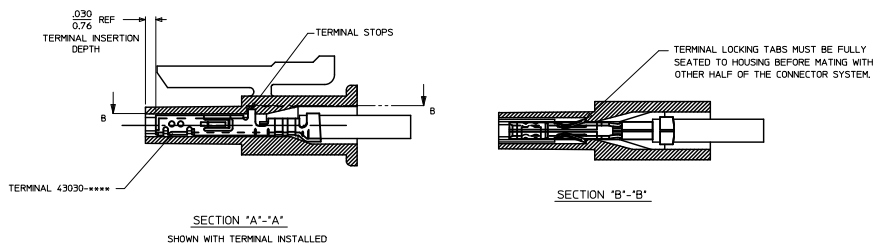
| ITEM NUMBER | NUMBER OF CIRCUIT | DIM. 'A' | DIM. 'B' | MATERIAL |
|-------------|-------------------|---------------|---------------|----------|
| 43645-0200 | 02 | SEE DETAIL | .118/(3.00) | 'B' |
| 43645-0300 | 03 | .388/(9.85) | .236/(6.00) | 'A' |
| 43645-0400 | 04 | .506/(12.85) | .354/(9.00) | |
| 43645-0500 | 05 | .624/(15.85) | .472/(12.00) | |
| 43645-0600 | 06 | .742/(18.85) | .591/(15.00) | |
| 43645-0700 | 07 | .860/(21.85) | .709/(18.00) | |
| 43645-0800 | 08 | .978/(24.85) | .827/(21.00) | |
| 43645-0900 | 09 | 1.096/(27.85) | .945/(24.00) | |
| 43645-1000 | 10 | 1.215/(30.85) | 1.063/(27.00) | |
| 43645-1100 | 11 | 1.333/(33.85) | 1.181/(30.00) | |
| 43645-1200 | 12 | 1.451/(36.85) | 1.299/(33.00) | |

(3-12 CIRCUIT HOUSING)

(2 CIRCUIT HOUSING)

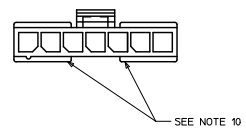


MATED MICRO-FIT CONNECTOR



NOTES:

- HOUSING MATERIAL:
 'A' - UNFILLED POLYESTER, RATED UL, 94V-0, COLOR IS BLACK.
 'B' - UNFILLED NYLON 6, RATED UL, 94V-0, HALOGEN-FREE AND IEC 60335-1, 4TH EDITION GLOW WIRE CAPABLE, COLOR IS BLACK.
 * MATERIAL 'B' PARTS ARE IDENTIFIED WITH A GREEN LABEL OR A GREEN DOT ON A WHITE LABEL, PART NUMBERS LISTED AS 'B' MATERIAL BUT MANUFACTURED PRIOR TO 8/30/2010 OR NOT CONTAINING THIS 'GREEN' IDENTIFICATION MAY BE MATERIAL 'A'.
- FINISH : N/A
- PRODUCT SPECIFICATION : PS-43650
- THIS RECEPTACLE ACCEPTS MOLEX MICRO FIT FEMALE CRIMP TERMINALS ONLY. SEE MOLEX DRAWING SD-43030-**** FOR SPECIFICATIONS.
- SEE SECTION 'A'-A' FOR TERMINAL ORIENTATION IN HOUSING.
- FOR OVERMOLDING PARAMETERS SEE ENGINEERING SPECIFICATION #SDS-43025-1000.
- THIS RECEPTACLE MATES WITH MOLEX PEB HEADER #3650 SERIES AND MOLEX PLUG 43640 SERIES (WIRE TO WIRE APPLICATIONS).
- SOME HOUSINGS MAY HAVE A SMALL GATE BLEMSH NEAR THE GATE LOCATION THAT DOES NOT AFFECT FUNCTIONALITY.
- MOLEX RECOMMENDS THE USE OF MICRO-FIT TEST PLUG, SERIES 44242-**** WHENEVER CONTINUITY TESTING IS PERFORMED. TEST PLUGS MUST NOT BE USED TO MAKE OR BREAK UNDER LOAD. MOLEX DOES NOT RECOMMEND USING STANDARD MATING COMPONENTS FOR HARNESS TESTING PURPOSES.
- THIS RIB IS DISCONTINUOUS ON CIRCUIT SIZES 7 THROUGH 12
- PART CONFORMS TO CLASS 'B' REQUIREMENTS OF COSMETIC SPECIFICATION PS-45499-002.



| | | | | | | |
|--|-----------------|---|----------------|-------|--------------|------------------------|
| ADD NYLON MATL PERMANENTLY CHROMIUM APPROX WITH | QUALITY SYMBOLS | GENERAL TOLERANCES (UNLESS SPECIFIED) | DISPENSE STYLE | SCALE | DESIGN UNITS | THIRD ANGLE PROJECTION |
| | ▽=0 | 4 PLACES ± --- ± --- | IN/MM | 4:1 | METRIC | ⊙ |
| | ▽=0 | 3 PLACES ± --- ± --- | mm | | | |
| | ▽=0 | 2 PLACES ± 0.25 ± 0.10 | INCH | | | |
| | | 1 PLACE ± 0.55 ± 0.14 | | | | |
| | | ANGULAR ±1/2° | | | | |
| | | DRAFT WHERE APPLICABLE MUST REMAIN WITHIN DIMENSIONS | | | | |
| | | SEE CHART | | | | |
| | | THIS DRAWING CONTAINS INFORMATION THAT IS PROPRIETARY TO MOLEX INCORPORATED AND SHOULD NOT BE USED WITHOUT WRITTEN PERMISSION | | | | |

2 THRU 12 SINGLE ROW RECEPTACLE

MOLEX INCORPORATED

SDA-43645-****

1 OF 1