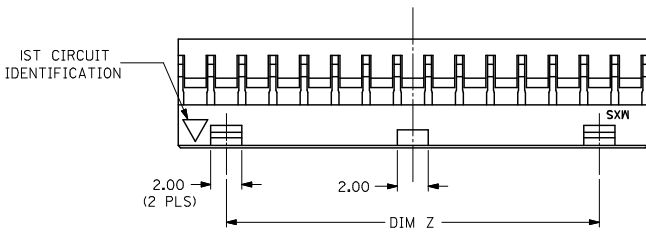


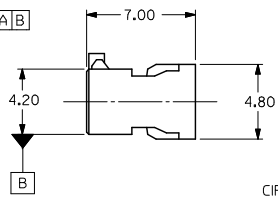
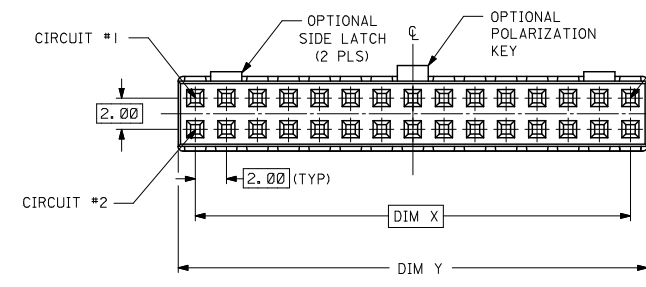
10 9 8 7 6 5 4 3 2 1



- NOTES:
1. MATERIAL: GLASS-FILLED POLYESTER UL RATED 94V-0  
COLOR: BLACK
  2. PART TO BE USED WITH CRIMP TERMINAL  
PART NUMBER 50394-8\*\*\*.
  3. APPLICABLE WIRE RANGE: AWG #24 - #30.
  4. WIRE INSULATION RANGE: DIAMETER 1.40MM MAXIMUM.
  5. 30 CKT SHOWN FOR ILLUSTRATION ONLY.

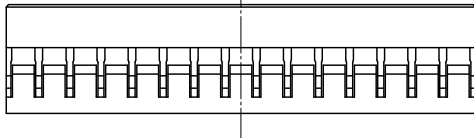
PLS REFER TO PART 5110-\*\*\*60 FOR CENTER LATCH OPTION.

PART NO.	CKT SIZE	DIM X	DIM Y	DIM Z
51110-045*	4	2.00	4.20	NA
51110-065*	6	4.00	6.20	NA
51110-085*	8	6.00	8.20	NA
51110-105*	10	8.00	10.20	NA
51110-125*	12	10.00	12.20	NA
51110-145*	14	12.00	14.20	8.00
51110-165*	16	14.00	16.20	10.00
51110-185*	18	16.00	18.20	12.00
51110-205*	20	18.00	20.20	14.00
51110-225*	22	20.00	22.20	16.00
51110-245*	24	22.00	24.20	18.00
51110-265*	26	24.00	26.20	20.00
51110-285*	28	26.00	28.20	22.00
51110-305*	30	28.00	30.20	24.00
51110-325*	32	30.00	32.20	26.00
51110-2252	22	20.00	22.20	NA



PART NUMBER LEGEND:

- 51110-\*\*\*5\*
- CIRCUIT SIZE
- 0 - WITHOUT CENTER POLARIZATION KEY AND SIDE LATCH.
  - 1 - WITH CENTER POLARIZATION KEY AND SIDE LATCH. (14 TO 32 CIRCUITS ONLY) WITH CENTER POLARIZATION KEY ONLY. (8 TO 12 CIRCUITS ONLY)
  - 2 - WITH CENTER POLARIZATION KEY ONLY. (22 CIRCUITS ONLY)



PDR#C200905064  
EC NO: S2009-0969  
D: PORNWANG 2009/06/17  
CHKD:ATSEE 2009/06/29  
APPR:MLONG 2009/06/29

QUALITY SYMBOLS  
▽=0  
▽=0

GENERAL TOLERANCES (UNLESS SPECIFIED)	
	mm
4 PLACES	± 0.10
3 PLACES	± 0.15
2 PLACES	± 0.20
1 PLACE	± 0.30
ANGULAR	± 3°

DIMENSION STYLE	
MM ONLY	
DRAWN BY	SKTOH
DATE	1993/10/26
CHECKED BY	EDPOH
DATE	1993/10/26
APPROVED BY	JMCHAN
DATE	1993/10/26

SCALE	DESIGN UNITS	THIRD ANGLE PROJECTION
NTS	METRIC	☉
TITLE: 2MM GRID, WIRE TO BOARD CONNECTOR, CRIMP RECEPT. HOUSING		
MOLEX INCORPORATED		
MATERIAL NO. SEE TABLE	DOCUMENT NO. SD-51110-***5*	SHEET NO. 1 OF 1

9 8 7 6 5 4 3 2 1