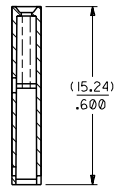
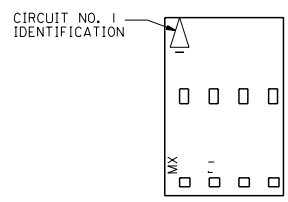
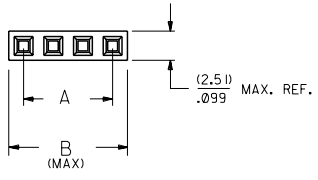


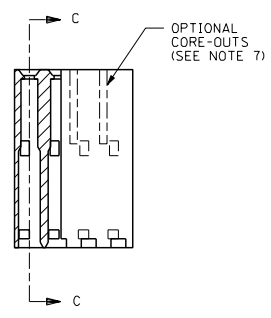
13 12 11 10 9 8 7 6 70066 4 3 2 1

- NOTES:**
- 1) MATERIAL: G.F. POLYESTER
  - 2) HOUSING TO BE USED WITH TERMINAL PT. NO. 70058-\*\*\*\*
  - 3) SEE CHART FOR CIRCUIT SIZES.
  - 4) TO BE USED WITH  $(0.64) \times (0.25)$  SQ. OR RD. PINS.
  - 5) PARTS STACKABLE END TO END AND SIDE BY SIDE ON  $(2.54) \times (100)$  CENTERS.
  - 6) REFER TO PRODUCT SPECIFICATION NO. : P.S.-70058
  - 7) PARTS MAY OR MAY NOT BE SUPPLIED WITH EXTERIOR CORE-OUT CONFIGURATION, SEE DWG. SD-70066-\*\*\*\* FOR OPTIONAL HOUSING DETAILS.
  - 8) PACKAGE PER PK-70066-100.

OPTION "A"



SECTION C-C



CKT. SIZE	EDP. NO.	ENG. NO.	A	B
2	50-57-9002	70066-0001	(2.54) .100	(5.05) .199
3	50-57-9003	70066-0002	(5.08) .200	(7.53) .299
4	50-57-9004	70066-0003	(7.62) .300	(10.13) .399
5	50-57-9005	70066-0004	(10.16) .400	(12.67) .499
6	50-57-9006	70066-0005	(12.70) .500	(15.21) .599
7	50-57-9007	70066-0006	(15.24) .600	(17.75) .699
8	50-57-9008	70066-0007	(17.78) .700	(20.29) .799
9	50-57-9009	70066-0008	(20.32) .800	(22.83) .899
10	50-57-9010	70066-0009	(22.86) .900	(25.37) .999
11	50-57-9011	70066-0010	(25.40) 1.000	(27.91) 1.099
12	50-57-9012	70066-0011	(27.94) 1.100	(30.45) 1.199
13	50-57-9013	70066-0012	(30.48) 1.200	(32.99) 1.299
14	50-57-9014	70066-0013	(33.02) 1.300	(35.53) 1.399
15	50-57-9015	70066-0014	(35.56) 1.400	(38.07) 1.499
16	50-57-9016	70066-0015	(38.10) 1.500	(40.61) 1.599
17	50-57-9017	70066-0016	(40.64) 1.600	(43.15) 1.699
18	50-57-9018	70066-0017	(43.18) 1.700	(45.69) 1.799
19	50-57-9019	70066-0018	(45.72) 1.800	(48.23) 1.899
20	50-57-9020	70066-0019	(48.26) 1.900	(50.77) 1.999
21	50-57-9021	70066-0020	(50.80) 2.000	(53.31) 2.099
22	50-57-9022	70066-0021	(53.34) 2.100	(55.85) 2.199
23	50-57-9023	70066-0022	(55.88) 2.200	(58.39) 2.299
24	50-57-9024	70066-0023	(58.42) 2.300	(60.93) 2.399
25	50-57-9025	70066-0024	(60.96) 2.400	(63.47) 2.499

REVISIONS LTR. REVISIONS LTR. REVISIONS		E REVISOR PER ECR* U10967 UC-MS*SUPLM@LUC	D REVISOR PER ECR* U80051 3-27-89 MGB	C REDRAWN ON CAD ECR * 9120 5/5/86 WZ	ADD PKG NOTE ECN LDT2000-0468 SCHAFFER 99/12/1	DIMENSIONS SHOWN IN METRIC INCH UNLESS OTHERWISE SPECIFIED TOLERANCES ANGULAR 1/2°	TITLE HOUSING CONNECTOR (2.54) X .100 GRID STACKABLE SINGLE ROW	MFG. SH. REV.
DRAFT WHERE APPLICABLE MUST REMAIN WITHIN DIMENSIONS						INCH METRIC ±.010 --- ±.014 ±0.25 --- ±0.35	REVISIONS ONLY ON CAD SYSTEM	
FILE NAME T00660001						PART NO. 70066	SHEET NO. I	DATE 03/27/86
APP'D. RS BY WZ RL SCALE 4:1						MOLEX INCORPORATED 135/EJLL 68532	SD-70066-0001-0024	THIS DRAWING CONTAINS INFORMATION THAT IS PROPRIETARY TO MOLEX INC. AND SHOULD NOT BE USED WITHOUT WRITTEN PERMISSION. DA C

13 12 11 10 9 8 7 6 5 4 3 2 1