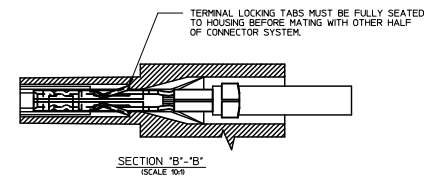
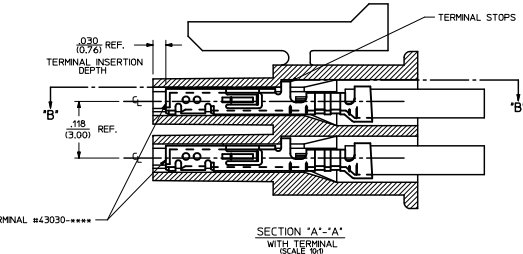
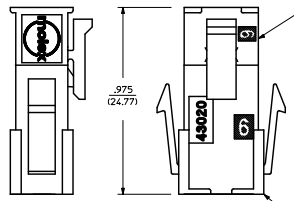
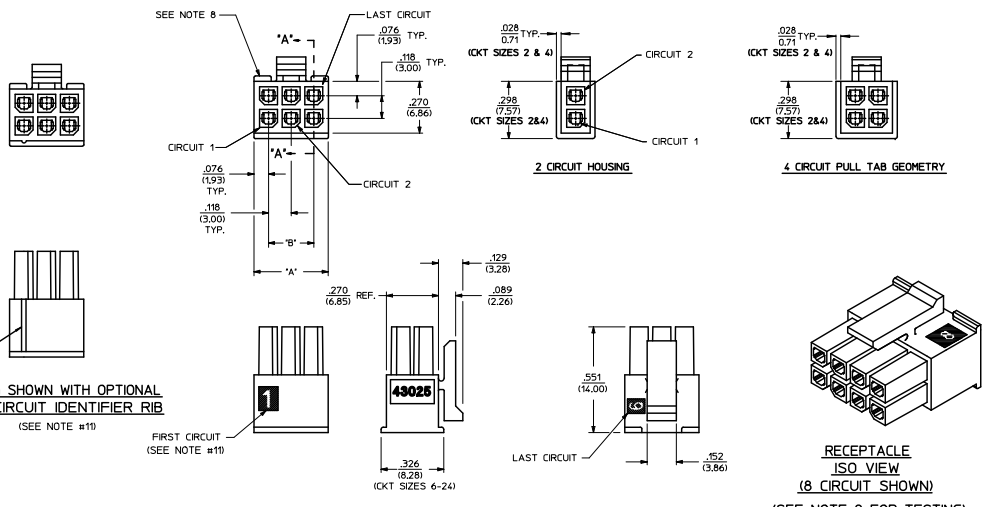


| PART CHARACTERISTICS | | |
|----------------------|----------------------|----------|
| NUMBER OF POSITION | ASSEMBLY ITEM NUMBER | MATERIAL |
| 02 | 43025-0200 | "B" |
| 04 | 43025-0400 | |
| 06 | 43025-0600 | |
| 08 | 43025-0800 | |
| 10 | 43025-1000 | |
| 12 | 43025-1200 | |
| 14 | 43025-1400 | |
| 16 | 43025-1600 | |
| 18 | 43025-1800 | |
| 20 | 43025-2000 | |
| 22 | 43025-2200 | "A" |
| 24 | 43025-2400 | |

| CKT. NO. | DIM. "A" | DIM. "B" |
|----------|---------------|---------------|
| 2 | .152/(3.86) | N/A |
| 4 | .270/(6.85) | .118/(3.00) |
| 6 | .388/(9.85) | .236/(6.00) |
| 8 | .506/(12.85) | .354/(9.00) |
| 10 | .624/(15.85) | .472/(12.00) |
| 12 | .742/(18.85) | .591/(15.00) |
| 14 | .860/(21.85) | .709/(18.00) |
| 16 | .978/(24.85) | .827/(21.00) |
| 18 | 1.096/(27.85) | .945/(24.00) |
| 20 | 1.215/(30.85) | 1.063/(27.00) |
| 22 | 1.333/(33.85) | 1.181/(30.00) |
| 24 | 1.451/(36.85) | 1.299/(33.00) |



- NOTES:
- HOUSING MATERIAL:
 "A" - UNFILLED POLYESTER, RATED UL 94V-0, COLOR IS BLACK.
 "B" - UNFILLED NYLON 6, RATED UL 94V-0, HALOGEN-FREE AND IEC 60335-1, 4TH EDITION GLOW WIRE CAPABLE, COLOR IS BLACK.
 * MATERIAL "B" PARTS ARE IDENTIFIED WITH A GREEN LABEL OR A GREEN DOT ON A WHITE LABEL, PART NUMBERS LISTED AS "B" MATERIAL BUT MANUFACTURED PRIOR TO 8/30/2010 OR NOT CONTAINING THIS "GREEN" IDENTIFICATION MAY BE MATERIAL "A".
 - FINISH: N/A
 - PRODUCT SPECIFICATION: PS-43045
 - PACKAGING SPECIFICATION: PK-43025-001
 - THIS RECEPTACLE MATES WITH 43020, 43045.
 - THIS RECEPTACLE TO BE USED WITH MOLEX FEMALE TERMINAL #43030-****. SEE SECTION "A"-A' FOR TERMINAL ORIENTATION IN HOUSING.
 - FOR OVERMOLDING PARAMETERS SEE ENGINEERING SPECIFICATION #SDS-43025-1000.
 - TOP PULL TABS ARE NOT AVAILABLE ON 2 AND 4 CIRCUIT PARTS.
 - MOLEX RECOMMENDS THE USE OF MICRO-FIT TEST PLUG, SERIES NO. 44242-**** WHENEVER TESTING IS PERFORMED. TEST PLUGS MUST NOT BE USED FOR MAKE OR BREAK UNDER LOAD. MOLEX DOES NOT RECOMMEND USING STANDARD MATING COMPONENTS FOR HARNESS TESTING PURPOSES.
 - SOME HOUSINGS MAY HAVE A SMALL GATE BLEMSH NEAR THE GATE THAT DOES NOT AFFECT FUNCTIONALITY.
 - HOUSINGS MAY HAVE EITHER AN IDENTIFIER RIB OR "1" SYMBOL ENGRAVE TO INDICATE CIRCUIT #1.
 - THIS PART CONFORMS TO CLASS "B" REQUIREMENTS OF COSMETIC SPECIFICATION PS-45499-002.

| QUALITY SYMBOLS | GENERAL TOLERANCES (UNLESS SPECIFIED) | | DRAWN BY | DATE | TITLE |
|--|---------------------------------------|--------|---|------------|--|
| | mm | INCH | | | |
| ▽=0 | 4 PLACES ± .--- | ± .--- | A. F. G. | 1993/01/14 | MICRO-FIT (3.0) 2 THRU 24 CIRCUIT RECEPTACLE |
| ▽=0 | 3 PLACES ± .--- | ± .010 | DATE | | |
| ▽=0 | 2 PLACES ± 0.25 | ± .014 | B. A. P. | 1993/01/14 | |
| ▽=0 | 1 PLACE ± 0.55 | ± .--- | APPROVED BY | DATE | |
| | ANGULAR ± 1/2° | | R. A. S. | 1993/01/14 | |
| DRAFT WHERE APPLICABLE MUST REMAIN WITHIN DIMENSIONS | | | MATERIAL NO. SEE CHART | | DOCUMENT NO. SDA-43025-**** |
| | | | SHEET THIS DRAWING CONTAINS INFORMATION THAT IS PROPRIETARY TO MOLEX INCORPORATED AND SHOULD NOT BE USED WITHOUT WRITTEN PERMISSION | | SHEET NO. 1 OF 1 |