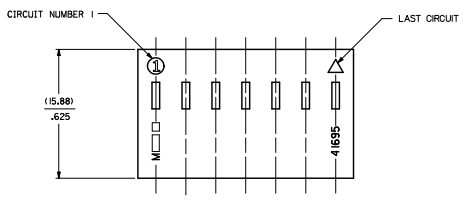
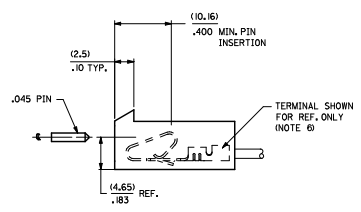
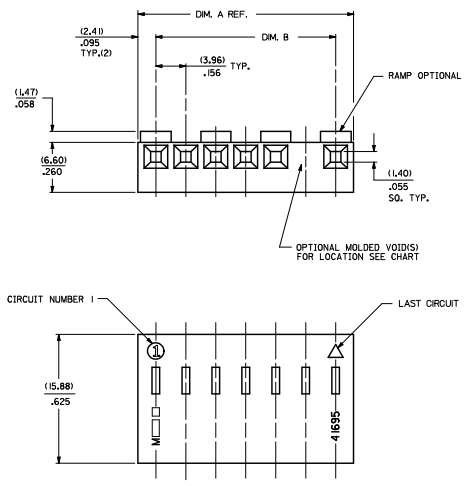


20 19 18 17 16 15 14 13 12 11 10 9 8 7 6 5 4 3 2 1



NO. OF CKTS SEE NOTE 10	DIM. A	DIM. B
1	NOT AVAILABLE	
2	(8.79) .348	(3.96±.05) .156±.002
3	(12.75) .502	(7.82±.08) .312±.003
4	(16.71) .665	(11.68±.08) .468±.003
5	(20.67) .814	(15.55±.08) .624±.003
6	(24.64) .970	(19.41±.10) .780±.004
7	(28.60) 1.126	(23.27±.10) .936±.004
8	(32.56) 1.282	(27.14±.10) 1.092±.004
9	(36.53) 1.438	(31.00±.10) 1.248±.004
10	(40.49) 1.594	(34.86±.10) 1.404±.006
11	(44.45) 1.750	(38.72±.15) 1.560±.006
12	(48.41) 1.906	(42.58±.15) 1.716±.006
13	(52.37) 2.062	(46.45±.15) 1.872±.006
14	(56.34) 2.218	(50.31±.15) 2.028±.007
15	(60.30) 2.374	(54.17±.18) 2.184±.007

41695 - * - * N - ##

MATERIAL CODE
N=MOLDED NATURAL
G=GLOW WIRE

CODE	RAMP	POLARIZING RES	PACKAGING
A	NO	NO	BULK PER PK-41695-001
B	YES	NO	BULK PER PK-41695-002
D	YES	YES	BULK PER PK-41695-003
G	END RAMP ONLY	YES	BULK PER PK-41695-003

VOID CODE
BLANK/NO VOIDS
NO. NO. CORRESPONDS TO CKT. NO. VOIDED
MULT. VOIDS START WITH 51

NO. OF CKTS.
SEE NOTE 10

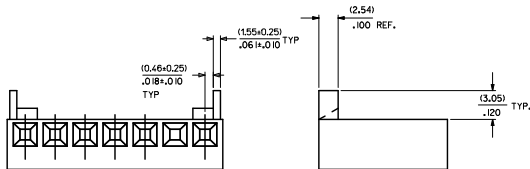
- NOTES:
- MATERIAL: N - GLASS FILLED POLYESTER, UL94V-0, MOLDED NATURAL
G - UL94V-0 PA6 NYLON, IEC 60335-1, 4th EDITION GLOW WIRE CAPABLE.
COLOR: BLACK
 - FINISH: SEE TERMINAL DRAWINGS
 - PRODUCT SPECIFICATION: PS-08-50 AND PS-40-02
 - PACKAGING INFORMATION: SEE LEGEND
 - MATES WITH (3.96)/.156 CENTER HEADERS AND (1.44)/.045 SQUARE OR ROUND PINS
 - HOUSING ACCEPTS STANDARD TERMINAL NOS.:
2478 (18-24 AWG) WITH (2.79)/.110 MAX. INSULATION DIA.
2578 (22-26 AWG) WITH (1.65)/.065 MAX. INSULATION DIA.
OR TRIFURCATED TERMINAL NOS.:
6438 (18-22 AWG) WITH (2.79)/.110 MAX. INSULATION DIA.
6838 (18-24 AWG) WITH (2.79)/.110 MAX. INSULATION DIA.
7258 (22-26 AWG) WITH (1.65)/.065 MAX. INSULATION DIA.
 - BOW (.006 MM/MIL) / .005 IN/AN
 - 10.13/1.005 MAX. FLASH ALLOWED ALONG DIMENSION B AND IN LOCKING WINDOW.
 - THIS PART CONFORMS TO CLASS B REQUIREMENTS OF COSMETIC SPECIFICATION PS-5499-002.
 - CIRCUIT SIZES 13 THROUGH 15 ARE NOT AVAILABLE IN G MATERIAL.

ADV/DES/LETE EUC/DES/OPN H/CHK/AMDR/PPR APPROV/ST/TH	QUALITY SYMBOLS	GENERAL TOLERANCES (UNLESS SPECIFIED)	DIMENSION STYLE	SCALE	DESIGN UNITS	THIRD ANGLE PROJECTION	
	∇=0 ∇=0 ∇=0	4 PLACES ±.--- INCH 3 PLACES ±.--- ±.010 2 PLACES ±.025 ±.014 1 PLACE ±.0.36 ±.--- ANGULAR ±1/2°	MM/IN DRAWN BY SKOWRONSKI CHECKED BY PATEL APPROVED BY LENZ	DATE 04/05/86 DATE 04/05/86 DATE 04/05/86	4:1	INCH	(3.96)/.156 CENTERLINE CONNECTOR HOUSING FOR KK CRIMP TERMINALS
	DRAFT WHERE APPLICABLE MUST REMAIN WITHIN DIMENSIONS	SEE CHART	PATENT NO.	DOCUMENT NO.	MOLEX INCORPORATED		
					SD-41695	1 OF 3	THIS DRAWING CONTAINS INFORMATION THAT IS PROPRIETARY TO MOLEX INCORPORATED AND SHOULD NOT BE USED WITHOUT WRITTEN PERMISSION

3 H
2 H
1 H
BHT/REV

OPTION CODE G

SAME AS OPTION D ONLY WITHOUT CENTER RAMPS



41695-N-DN-*		
PART NO.	ENG. NO.	VOIDS
09-50-8023	41695-N-D2	
09-50-8033	41695-N-D3	
09-50-8043	41695-N-D4	
09-50-8053	41695-N-D5	
09-50-8063	41695-N-D6	
09-50-8073	41695-N-D7	
09-50-8083	41695-N-D8	
09-50-8093	41695-N-D9	
09-50-8103	41695-N-D10	
09-50-8113	41695-N-D11	
09-50-8123	41695-N-D12	
09-50-8133	41695-N-D13	
09-50-8143	41695-N-D14	
09-50-8153	41695-N-D15	
	41695-N-D15-12	12
09-50-8063	41695-N-D5-2	2
09-50-8094	41695-N-D9-3	3
09-50-9033	41695-N-D3-2	2
09-50-9043	41695-N-D4-2	2
09-50-9063	41695-N-D6-2	2
09-50-9013	41695-N-D7-2	2
09-50-9044	41695-N-D4-3	3
41695-0003	41695-N-D07-5	5

41695-N-GN-*		
PART NO.	ENG. NO.	VOIDS
	NOT AVAILABLE	
	NOT AVAILABLE	
	NOT AVAILABLE	
	NOT AVAILABLE	
09-50-8055	41695-N-G5	
	41695-N-G6	
	41695-N-G7	
	41695-N-G8	
	41695-N-G9	
	41695-N-G10	
	41695-N-G11	
	41695-N-G12	
	41695-N-G13	
09-50-8145	41695-N-G14	
	41695-N-G15	

41695-G-DN-*		
PART NO.	ENG. NO.	VOIDS
41695-2001	41695-G-D02	
41695-2004	41695-G-D03	
41695-2021	41695-G-D04	
41695-2022	41695-G-D05	
41695-2023	41695-G-D06	
41695-2024	41695-G-D07	
41695-2025	41695-G-D08	
41695-2026	41695-G-D09	
41695-2027	41695-G-D10	
41695-2028	41695-G-D11	
41695-2029	41695-G-D12	

41695-G-GN-*		
PART NO.	ENG. NO.	VOIDS
	NOT AVAILABLE	
	NOT AVAILABLE	
41695-2012	41695-G-G04	
41695-2015	41695-G-G05	
41695-2016	41695-G-G06	
41695-2017	41695-G-G07	
41695-2018	41695-G-G08	
41695-2019	41695-G-G09	
41695-2020	41695-G-G10	
41695-2030	41695-G-G11	
41695-2031	41695-G-G12	

SEE SHEET 1 41695-2028 H. CHYKAMPER 2011/01/08 CHYKAMPER 2011/01/08 APPROVAL 2011/01/21	QUALITY SYMBOLS	GENERAL TOLERANCES (UNLESS SPECIFIED)	DIMENSION STYLE	SCALE	DESIGN UNITS	THIRD ANGLE PROJECTION	
	▽=0	4 PLACES ± --- INCH	MM/IN	4:1	INCH		
	▽=0	3 PLACES ± --- INCH					
	▽=0	2 PLACES ± --- INCH					
	1 PLACE ± --- INCH	ANGULAR ±1/2°					
		DRAFT WHERE APPLICABLE MUST REMAIN WITHIN DIMENSIONS	SEE CHART				
			DRAWN BY DATE SAMI EC 09/01/87		TITLE (3,96)/.156 CENTERLINE CONNECTOR HOUSING FOR KK CRIMP TERMINAL		
			CHECKED BY DATE PATEL 09/01/87		MOLEX INCORPORATED		
			APPROVED BY DATE LENZ 09/01/87		DOCUMENT NO. SD-41695		
			MATERIAL NO.		SHEET NO. 3 OF 3		
			THIS DRAWING CONTAINS INFORMATION THAT IS PROPRIETARY TO MOLEX INCORPORATED AND SHOULD NOT BE USED WITHOUT WRITTEN PERMISSION				