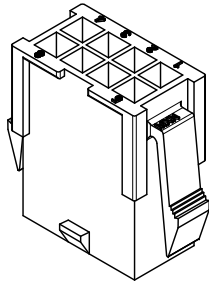
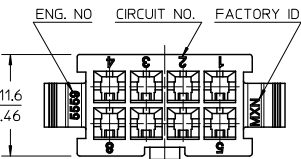
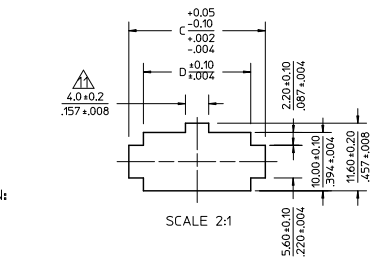
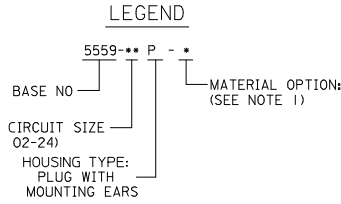
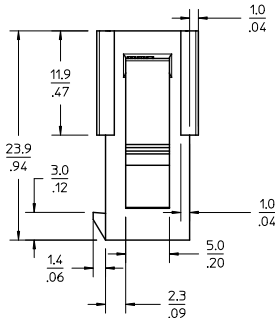
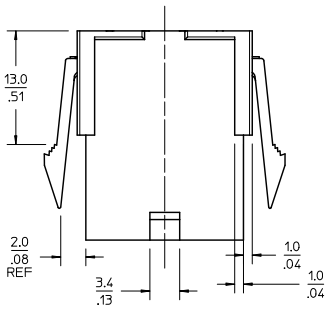


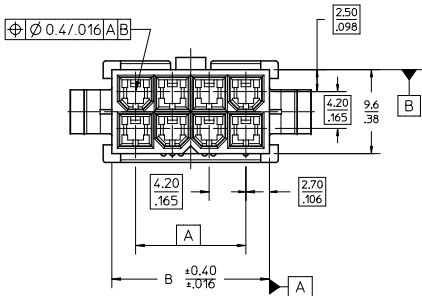
13 12 11 10 9 8 7 6 5 4 3 2 1



- NOTES:
 1) MATERIAL:
 BLANK = NYLON 6/6, 94V-2, COLOR: NATURAL.
 BL = NYLON 6/6, 94V-2, COLOR: BLACK.
 BU = NYLON 6/6, 94V-2, COLOR: BLUE.
 RE = NYLON 6/6, 94V-2, COLOR: RED.
 210 = NYLON 6/6, 94V-0, COLOR: NATURAL.
 2) FINISH: NOT APPLICABLE
 3) PRODUCT SPECIFICATION: PS-5556-001
 4) PACKAGING: BULK
 5) PART MATES WITH MOLEX RECEPTACLE #5557.
 6) PART TO BE USED WITH MOLEX MALE TERMINAL #5558.
 7) PART IS NOT DESIGNED FOR CURRENT SHARING.
 8) CONNECTORS ARE NOT TO BE MATED OR UNMATED WHILE CIRCUITS ARE LIVE.
 9) WIRES ARE TO BE DRESSED IN SUCH A MANNER TO ALLOW THE TERMINALS TO FLOAT FREELY IN THE POCKET.
 10) PART CONFORMS TO CLASS 'B' REQUIREMENTS OF COSMETIC SPECIFICATION PS-45499-002 WITH THE EXCEPTION OF DISCOLORATION, FLASH AND SINK MEET CLASS 'C' REQUIREMENTS.
 ⚠️ ON 2 CIRCUITS PARTS THIS DIMENSION IS ALLOWABLE UP TO 'D' DIMENSION.
 ⚠️ PANEL HOLE TO BE PUNCHED OUT IN THE SAME DIRECTION AS INSERTION INTO THE PANEL.



RECOMMENDED PANEL HOLE DIMENSIONS
 (THICKNESS : 0.8-2.0(.032-.079))

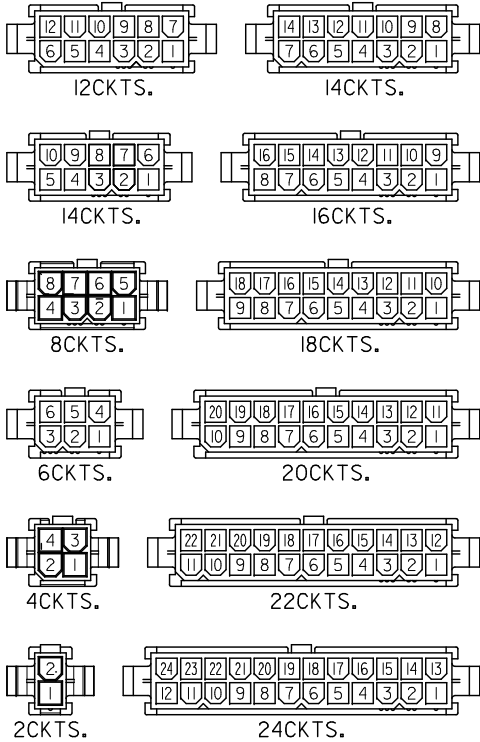


52.1/2.051	51.0/2.244	51.6/2.031	46.2/1.819	24
47.9/1.886	52.8/2.079	47.4/1.866	42.0/1.654	22
43.7/1.720	48.6/1.915	43.2/1.701	37.8/1.488	20
39.5/1.555	44.4/1.748	39.0/1.535	33.6/1.323	18
35.3/1.390	40.2/1.583	34.8/1.370	29.4/1.158	16
31.1/1.224	36.0/1.417	30.6/1.205	25.2/992	14
26.8/1.055	31.8/1.252	26.4/1.039	21.0/827	12
22.6/890	27.6/1.087	22.2/874	16.8/661	10
18.4/724	23.4/921	18.0/709	12.6/496	8
14.2/559	19.2/756	13.8/543	8.4/331	6
10.0/394	15.0/591	9.6/378	4.2/165	4
5.8/228	10.8/425	5.4/213	—	2
				A
				C
				D
				E
				F
				G
				H
				I
				J

REMOVED -04P-RE EC NO: UCP200-2477 DRAWN: JAGUILAR 2010/04/09 CHKD: BELL 2010/08/26 APPR: SMITH 2010/08/27	QUALITY SYMBOLS □=0 ▽=0 ▽=0	GENERAL TOLERANCES (UNLESS SPECIFIED):	DIMENSION STYLE MM/IN	SCALE 3:1	DESIGN UNITS METRIC	THIRD ANGLE PROJECTION	
		4 PLACES ±.005 ±.005	H. HIRAMOTO 1988/10/14	TITLE	NEW MINI-FIT CONNECTOR CRIMP PIN HOUSING		
		3 PLACES ±.012	CHECKED BY DATE	MOLEX INCORPORATED			
		2 PLACES ±.030 ±.016	Y. YAMADA 1988/10/21	DOCUMENT NO. SD-5559-NP			
1 PLACE ±.40 ±.005	APPROVED BY DATE	SHEET NO. 1 OF 2					
ANGULAR ± 3°	M. ENOMOTO 1988/10/24	THIS DRAWING CONTAINS INFORMATION THAT IS PROPRIETARY TO MOLEX INCORPORATED AND SHOULD NOT BE USED WITHOUT WRITTEN PERMISSION					
DRAFT WHERE APPLICABLE MUST REMAIN WITHIN DIMENSIONS		SEE CHART					

1b_frame_C.P. AM.T Rev. F 2009/06/18

13 12 11 10 9 8 7 6 5 4 3 2 1



CIRCUIT SIZE LAYOUT (SCALE : 2-1)

V-2 BLACK		V-2 BLUE		V-2 RED		V-0 NATURAL		V-2 NATURAL						
	24					24	39-01-2246	5559-24P-210	24	39-01-2241	5559-24P	24		
	22					22	-2226	-22P-210	22	-2221	-22P	22		
	20					20	-2206	-20P-210	20	-2201	-20P	20		
	18					18	-2186	-18P-210	18	-2181	-18P	18		
	16					16	-2166	-16P-210	16	-2161	-16P	16		
	14					14	-2146	-14P-210	14	-2141	-14P	14		
	12					12	-2126	-12P-210	12	-2121	-12P	12		
	10					10	-2106	-10P-210	10	-2101	-10P	10		
	8					8	-2086	-08P-210	8	-2081	-08P	8		
	6					6	-2066	-06P-210	6	-2061	-06P	6		
	2					2	-2046	-04P-210	4	-2041	-04P	4		
						2	39-01-2026	5559-02P-210	2	39-01-2021	5559-02P	2		
EDP NO.	ENG. NO.	CIRCUIT	EDP NO.	ENG. NO.	CIRCUIT	EDP NO.	ENG. NO.	CIRCUIT	EDP NO.	ENG. NO.	CIRCUIT	EDP NO.	ENG. NO.	CIRCUIT

QUALITY SYMBOLS	GENERAL TOLERANCES (UNLESS SPECIFIED)		DIMENSION STYLE		SCALE		DESIGN UNITS		THIRD ANGLE PROJECTION	
	mm	INCH	MM/IN	DATE	2:1	METRIC	⊙	THIRD ANGLE		
▽=0	4 PLACES ±.005	±.0005	DRAWN BY	1988/10/14	TITLE NEW MINI. FIT CONNECTOR CRIMP PIN HOUSING					
▽=0	3 PLACES ±.012	±.0012	CHECKED BY	DATE	MOLEX INCORPORATED					
▽=0	2 PLACES ±.030	±.0030	APPROVED BY	DATE	MATERIAL NO. SD-5559-NP SHEET NO. 2 OF 2					
▽=0	1 PLACE ±.40	±.0040	M. ENOMOTO	1988/10/24	DOCUMENT NO. THIS DRAWING CONTAINS INFORMATION THAT IS PROPRIETARY TO MOLEX INCORPORATED AND SHOULD NOT BE USED WITHOUT WRITTEN PERMISSION					
	ANGULAR ± 3°		DRAFT WHERE APPLICABLE MUST REMAIN WITHIN DIMENSIONS		SEE CHART					