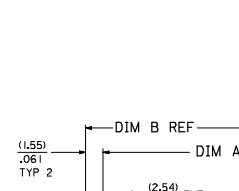
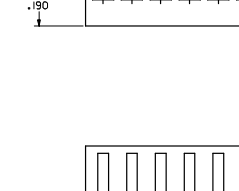


NO. OF CKT'S.	DIM. A	DIM. B	DIM. C
1	N/A	(5.10)	(7.16)
2	(7.54±.05)	.122	(9.70)
3	.100±.002	.222	3.382
4	(5.08±.05)	(8.18)	(12.24)
5	(1.62±.05)	.322	4.882
6	.300±.002	(10.72)	(14.78)
7	(10.86±.05)	.422	5.882
8	.400±.002	(13.26)	(17.32)
9	(12.70±.08)	.522	6.882
10	.500±.003	(15.80)	(19.86)
11	(15.24±.08)	.622	7.882
12	.600±.003	(18.34)	(22.40)
13	(17.78±.08)	.722	8.882
14	.700±.003	(20.88)	(24.84)
15	(19.32±.10)	.822	9.882
16	.800±.004	(23.42)	(27.48)
17	(22.86±.10)	.922	10.882
18	.900±.004	(25.96)	(30.02)
19	(25.40±.10)	1.022	11.882
20	L000±.004	1.122	(32.56)
21	(27.94±.13)	(31.04)	(35.10)
22	L100±.005	1.222	12.882
23	(30.48±.13)	(33.58)	(37.64)
24	L200±.005	1.322	14.882
25	(33.02±.13)	(36.12)	(40.18)
26	L300±.005	1.422	15.882
27	(35.56±.13)	(38.66)	(42.72)
28	L400±.005	1.522	16.882
29	(38.10±.15)	(41.20)	(45.26)
30	L500±.006	1.622	17.882
31	(40.64±.15)	(43.74)	(47.80)
32	L600±.006	1.722	18.882
33	(43.18±.15)	(46.28)	(50.34)
34	L700±.006	1.822	19.882
35	(45.72±.15)	(48.82)	(52.88)
36	L800±.006	1.922	20.882
37	(48.26±.15)	(51.36)	(55.42)
38	L900±.006	2.022	21.882
39	(50.80±.18)	(53.90)	(57.96)
40	2.000±.007	2.122	22.882
41	(53.34±.18)	(56.44)	(60.50)
42	2.100±.007	2.222	23.882
43	(55.88±.18)	(58.98)	(63.04)
44	2.200±.007	2.322	24.882
45	(58.42±.18)	(61.52)	(65.58)
46	2.300±.007	2.422	25.882
47	(60.96±.20)	(64.06)	(68.12)
48	2.400±.008	2.522	26.882
49	(63.50±.20)	(66.60)	(70.66)
50	2.500±.008	2.622	27.882
51	(66.04±.20)	(69.14)	(73.20)
52	2.600±.008	2.722	28.882
53	(68.58±.20)	(71.68)	(75.74)
54	2.700±.008	2.822	29.882
55	(71.12±.23)	(74.22)	(78.28)
56	2.800±.009	2.922	30.882
57	(73.66±.23)	(76.76)	(80.82)
58	2.900±.009	3.022	31.882
59	(76.20±.23)	(79.30)	(83.36)
60	3.000±.009	3.122	32.882
61	(78.74±.23)	(81.84)	(85.90)
62	3.100±.009	3.222	33.882
63	(81.28±.25)	(84.38)	(88.44)
64	3.200±.010	3.322	34.882
65	(83.82±.25)	(86.92)	(90.98)
66	3.300±.010	3.422	35.882
67	(86.36±.25)	(89.46)	(93.52)
68	3.400±.010	3.522	36.882
69	(88.90±.25)	(92.00)	(96.06)
70	3.500±.010	3.622	37.882
71	(91.44±.28)	(94.54)	(98.60)
72	3.600±.011	3.722	38.882
73	(93.98±.28)	(97.08)	(101.14)
74	3.700±.011	3.822	39.882
75	(96.52±.28)	(99.62)	(103.68)
76	3.800±.011	3.922	40.882
77	(99.06±.28)	(102.16)	(106.22)
78	3.900±.011	4.022	41.882

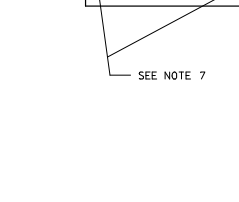
2695-NR



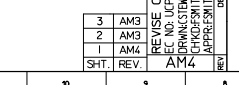
2695-NRP



2695-NE



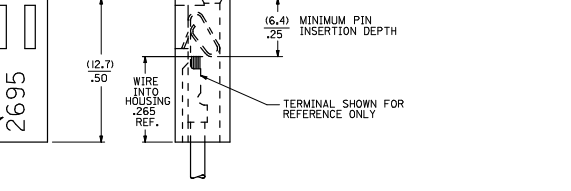
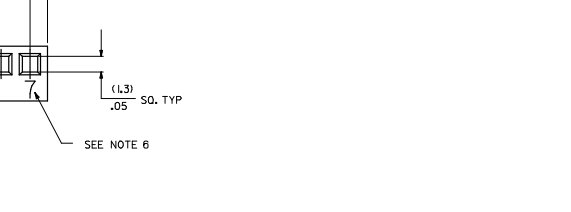
2695-NC*



2695 - N * *
NO. OF. CIRCUITS

VOID LOCATION SEE CHART

	MOUNTING EARS	RAMP	POLARIZING RIBS	DYED	MAT'L	RETENTION PEG
BLANK	NO	NO	NO	NO	NO	NO
E	YES	NO	NO	NO	NOTE 1A	NO
R	NO	YES	NO	NO	NOTE 1A	NO
RP	NO	YES	YES	NO	NOTE 1A	NO
RPD	NO	YES	YES	YES	NOTE 1A	NO
C	NO	NO	NO	NO	NOTE 1A	YES
RP-BK	NO	YES	YES	NO	NOTE 1B	NO



- NOTES
1. MATERIAL A - NYLON UL94V-0, COLOR WHITE
B - NYLON UL94V-0, COLOR BLACK
 2. FINISH SEE TERMINAL DRAWING
 3. THIS HOUSING CONFORMS TO MOLEX PRODUCT SPECIFICATION PS-10-07.
 4. PACKAGING N/A
 5. HOUSING TO BE USED WITH CRIMP TYPE TERMINAL NUMBER 2759, 22-30 GAUGE WIRE WITH (1.57)/.062 DIAMETER MAXIMUM WIRE INSULATION.
 6. LAST CIRCUIT NUMBER TO BE DESIGNATED ON 7 CKTS. AND HIGHER, EXCEPT WHEN 'N'X' APPEARS.
 7. CIRCUIT NUMBER '1' AND ENGINEERING NUMBER TO APPEAR ON PARTS 3 CKTS. AND HIGHER.

QUALITY SYMBOLS	GENERAL TOLERANCES (UNLESS SPECIFIED)	DIMENSION STYLE	SCALE	DESIGN UNITS	THIRD ANGLE PROJECTION
0	FRACTIONAL	MM/IN	1:1	INCH	AS SHOWN
1	DECIMAL	MM/IN	1:1	INCH	AS SHOWN
2	ANGULAR	MM/IN	1:1	INCH	AS SHOWN
3	POSITION	MM/IN	1:1	INCH	AS SHOWN
4	CONCENTRICITY	MM/IN	1:1	INCH	AS SHOWN
5	CIRCULAR RUNOUT	MM/IN	1:1	INCH	AS SHOWN
6	PROFILE	MM/IN	1:1	INCH	AS SHOWN
7	SPINDLE	MM/IN	1:1	INCH	AS SHOWN
8	SCREW	MM/IN	1:1	INCH	AS SHOWN
9	WELD	MM/IN	1:1	INCH	AS SHOWN
10	PLATE	MM/IN	1:1	INCH	AS SHOWN
11	WELD	MM/IN	1:1	INCH	AS SHOWN
12	WELD	MM/IN	1:1	INCH	AS SHOWN
13	WELD	MM/IN	1:1	INCH	AS SHOWN
14	WELD	MM/IN	1:1	INCH	AS SHOWN
15	WELD	MM/IN	1:1	INCH	AS SHOWN
16	WELD	MM/IN	1:1	INCH	AS SHOWN
17	WELD	MM/IN	1:1	INCH	AS SHOWN
18	WELD	MM/IN	1:1	INCH	AS SHOWN
19	WELD	MM/IN	1:1	INCH	AS SHOWN
20	WELD	MM/IN	1:1	INCH	AS SHOWN
21	WELD	MM/IN	1:1	INCH	AS SHOWN
22	WELD	MM/IN	1:1	INCH	AS SHOWN
23	WELD	MM/IN	1:1	INCH	AS SHOWN
24	WELD	MM/IN	1:1	INCH	AS SHOWN
25	WELD	MM/IN	1:1	INCH	AS SHOWN
26	WELD	MM/IN	1:1	INCH	AS SHOWN
27	WELD	MM/IN	1:1	INCH	AS SHOWN
28	WELD	MM/IN	1:1	INCH	AS SHOWN
29	WELD	MM/IN	1:1	INCH	AS SHOWN
30	WELD	MM/IN	1:1	INCH	AS SHOWN
31	WELD	MM/IN	1:1	INCH	AS SHOWN
32	WELD	MM/IN	1:1	INCH	AS SHOWN
33	WELD	MM/IN	1:1	INCH	AS SHOWN
34	WELD	MM/IN	1:1	INCH	AS SHOWN
35	WELD	MM/IN	1:1	INCH	AS SHOWN
36	WELD	MM/IN	1:1	INCH	AS SHOWN
37	WELD	MM/IN	1:1	INCH	AS SHOWN
38	WELD	MM/IN	1:1	INCH	AS SHOWN
39	WELD	MM/IN	1:1	INCH	AS SHOWN
40	WELD	MM/IN	1:1	INCH	AS SHOWN

	2695-N			2695-NE			2695-NR			2695-NRP			2695-NRPD			2695-NRP-BK		
	PART NO.	ENG NO.	VOID	PART NO.	ENG NO.	VOID	PART NO.	ENG NO.	VOID	PART NO.	ENG NO.	VOID	PART NO.	ENG NO.	VOID	PART NO.	ENG NO.	VOID
M	22-01-2011	2695-1		22-01-2022	2695-2E		22-01-2027	2695-2R		N/A	2695-RR		N/A	2695-IRPD		50-29-1557	2695-2RP-BK	
	22-01-2021	2695-2		22-01-2032	2695-3E		22-01-2037	2695-3R		22-01-3027	2695-2RP			2695-2RPD		50-29-1558	2695-3RP-BK	
	22-01-2031	2695-3			2695-4E		22-01-2047	2695-4R		22-01-3037	2695-3RP			2695-3RPD		50-29-1559	2695-4RP-BK	
	22-01-2041	2695-4			2695-5E		22-01-2057	2695-5R		22-01-3047	2695-4RP			2695-4RPD		50-29-1560	2695-5RP-BK	
L	22-01-2051	2695-5			2695-6E		22-01-2067	2695-6R		22-01-3057	2695-5RP		22-32-2051	2695-5RPD		50-29-1561	2695-6RP-BK	
	22-01-2061	2695-6			2695-7E		22-01-2077	2695-7R		22-01-3067	2695-6RP			2695-6RPD		50-29-1562	2695-7RP-BK	
	22-01-2071	2695-7		22-01-2072	2695-7E		22-01-2087	2695-8R		22-01-3077	2695-7RP			2695-7RPD		50-29-1563	2695-8RP-BK	
	22-01-2081	2695-8			2695-8E		22-01-2087	2695-8R		22-01-3087	2695-8RP			2695-8RPD		50-29-1564	2695-9RP-BK	
	22-01-2091	2695-9			2695-9E		22-01-2097	2695-9R		22-01-3097	2695-9RP			2695-9RPD		50-29-1565	2695-10RP-BK	
	22-01-2101	2695-10			2695-10E		22-01-2107	2695-10R		22-01-3107	2695-10RP		22-32-2101	2695-10RPD		50-29-1566	2695-11RP-BK	
	22-01-2111	2695-11			2695-11E		22-01-2117	2695-11R		22-01-3117	2695-11RP			2695-11RPD		50-29-1567	2695-12RP-BK	
	22-01-2121	2695-12			2695-12E		22-01-2127	2695-12R		22-01-3127	2695-12RP			2695-12RPD		50-29-1568	2695-13RP-BK	
	22-01-2131	2695-13			2695-13E		22-01-2137	2695-13R		22-01-3137	2695-13RP			2695-13RPD		50-29-1569	2695-14RP-BK	
K	22-01-2141	2695-14			2695-14E		22-01-2147	2695-14R		22-01-3147	2695-14RP			2695-14RPD		50-29-1570	2695-15RP-BK	
	22-01-2151	2695-15			2695-15E		22-01-2157	2695-15R		22-01-3157	2695-15RP			2695-15RPD		50-29-1571	2695-16RP-BK	
	22-01-2161	2695-16			2695-16E		22-01-2167	2695-16R		22-01-3167	2695-16RP			2695-16RPD		50-29-1572	2695-17RP-BK	
	22-01-2171	2695-17			2695-17E		22-01-2177	2695-17R		22-01-3177	2695-17RP			2695-17RPD		50-29-1573	2695-18RP-BK	
	22-01-2181	2695-18			2695-18E		22-01-2187	2695-18R		22-01-3187	2695-18RP			2695-18RPD		50-29-1574	2695-19RP-BK	
	22-01-2191	2695-19			2695-19E		22-01-2197	2695-19R		22-01-3197	2695-19RP			2695-19RPD		50-29-1575	2695-20RP-BK	
J	22-01-2201	2695-20			2695-20E		22-01-2207	2695-20R		22-01-3207	2695-20RP			2695-20RPD		50-29-1576	2695-21RP-BK	
	22-01-2211	2695-21			2695-21E		22-01-2217	2695-21R		22-01-3217	2695-21RP			2695-21RPD		50-29-1577	2695-22RP-BK	
	22-01-2221	2695-22			2695-22E		22-01-2227	2695-22R		22-01-3227	2695-22RP			2695-22RPD		50-29-1578	2695-23RP-BK	
	22-01-2231	2695-23			2695-23E		22-01-2237	2695-23R		22-01-3237	2695-23RP			2695-23RPD		50-29-1579	2695-24RP-BK	
	22-01-2241	2695-24			2695-24E		22-01-2247	2695-24R		22-01-3247	2695-24RP			2695-24RPD		50-29-1580	2695-25RP-BK	
I	22-01-2251	2695-25			2695-25E		22-01-2257	2695-25R		22-01-3257	2695-25RP			2695-25RPD		50-29-1581	2695-26RP-BK	
	22-01-2261	2695-26			2695-26E		22-01-2267	2695-26R		22-01-3267	2695-26RP			2695-26RPD		50-29-1582	2695-27RP-BK	
	22-01-2271	2695-27			2695-27E		22-01-2277	2695-27R		22-01-3277	2695-27RP			2695-27RPD		50-29-1583	2695-28RP-BK	
	22-01-2281	2695-28			2695-28E		22-01-2287	2695-28R		22-01-3287	2695-28RP			2695-28RPD				
	22-01-2291	2695-29			2695-29E		22-01-2297	2695-29R						2695-29RPD				
	2695-30				2695-30E			2695-30R						2695-30RPD				
	2695-31				2695-31E			2695-31R						2695-31RPD				
	2695-32				2695-32E			2695-32R						2695-32RPD				
	22-01-2331	2695-33			2695-33E		22-01-2337	2695-33R						2695-33RPD				
	2695-34				2695-34E			2695-34R						2695-34RPD				
	2695-35				2695-35E			2695-35R						2695-35RPD				
	2695-36				2695-36E			2695-36R						2695-36RPD				
	2695-37				2695-37E			2695-37R						2695-37RPD				
	2695-38				2695-38E			2695-38R						2695-38RPD				
	2695-39				2695-39E			2695-39R						2695-39RPD				
	2695-40				2695-40E			2695-40R						2695-40RPD				
							22-01-2062	2695-06R-5	5	22-01-5102	2695-IORP-2	2						
										22-01-5044	2695-4RP-3	3						
										22-01-5103	2695-IORP-5	5						
										22-01-5111	2695-IORP-5	5						
										22-01-5104	2695-IORP-9	9						

ADD. P/IN 22-01-2032 EC. NO. LCP2006-1024 2005/11/02 2007/11/02 LAMCHOLSCHMIDT LCP2006-1024 2007/11/02 AM	QUALITY SYMBOLS 	GENERAL TOLERANCES (UNLESS SPECIFIED) mm ±--- ±--- INCH ±--- ±--- ANGULAR ±1/2° ±---	DIMENSION STYLE MM/IN	SCALE ---	DESIGN UNITS INCH	THIRD ANGLE PROJECTION
		DRAWN BY PEREZ-ARGUET CHECKED BY PATEL APPROVED BY LENZ DATE 1988/02/25 DATE 1988/02/25 DATE 1988/02/25	TITLE (2.54)/.100 HOUSING FOR KK CRIMP TYPE TERMINALS 2695 SERIES DRAWING	MATERIAL NO. SD-2695 DOCUMENT NO. SD-2695	SHEET NO. 2 OF 3	

DRAFT WHERE APPLICABLE MUST REMAIN WITHIN DIMENSIONS

THIS DRAWING CONTAINS INFORMATION THAT IS PROPRIETARY TO MOLEX INCORPORATED AND SHOULD NOT BE USED WITHOUT WRITTEN PERMISSION

