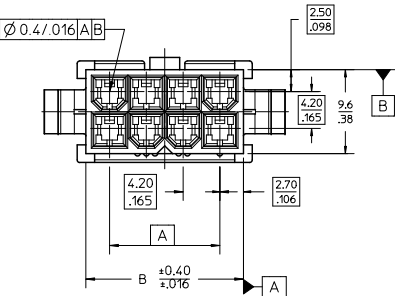
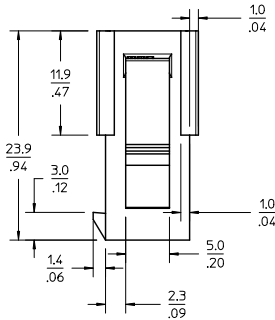
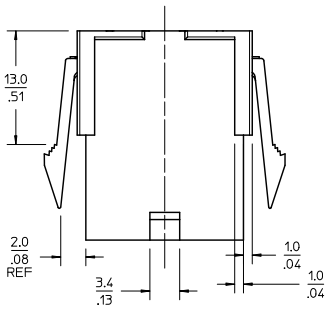
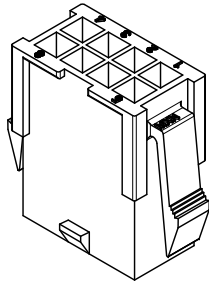
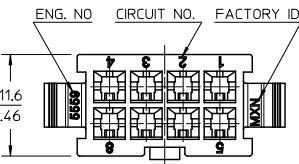
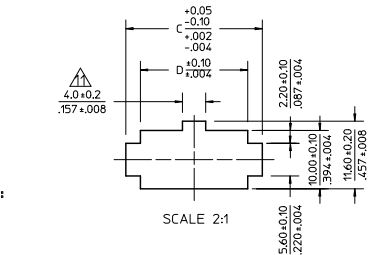
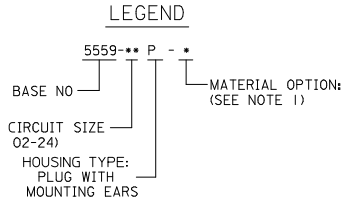


13 12 11 10 9 8 7 6 5 4 3 2 1



NOTES:
 1) MATERIAL:
 BLANK = NYLON 6/6, 94V-2, COLOR: NATURAL.
 BL = NYLON 6/6, 94V-2, COLOR: BLACK.
 BU = NYLON 6/6, 94V-2, COLOR: BLUE.
 RE = NYLON 6/6, 94V-2, COLOR: RED.
 210 = NYLON 6/6, 94V-0, COLOR: NATURAL.
 2) FINISH: NOT APPLICABLE
 3) PRODUCT SPECIFICATION: PS-5556-001
 4) PACKAGING: BULK
 5) PART MATES WITH MOLEX RECEPTACLE #5557.
 6) PART TO BE USED WITH MOLEX MALE TERMINAL #5558.
 7) PART IS NOT DESIGNED FOR CURRENT SHARING.
 8) CONNECTORS ARE NOT TO BE MATED OR UNMATED WHILE CIRCUITS ARE LIVE.
 9) WIRES ARE TO BE DRESSED IN SUCH A MANNER TO ALLOW THE TERMINALS TO FLOAT FREELY IN THE POCKET.
 10) PART CONFORMS TO CLASS 'B' REQUIREMENTS OF COSMETIC SPECIFICATION PS-45499-002 WITH THE EXCEPTION OF DISCOLORATION, FLASH AND SINK MEET CLASS 'C' REQUIREMENTS.
 ⚠️ ON 2 CIRCUITS PARTS THIS DIMENSION IS ALLOWABLE UP TO 'D' DIMENSION.
 ⚠️ PANEL HOLE TO BE PUNCHED OUT IN THE SAME DIRECTION AS INSERTION INTO THE PANEL.



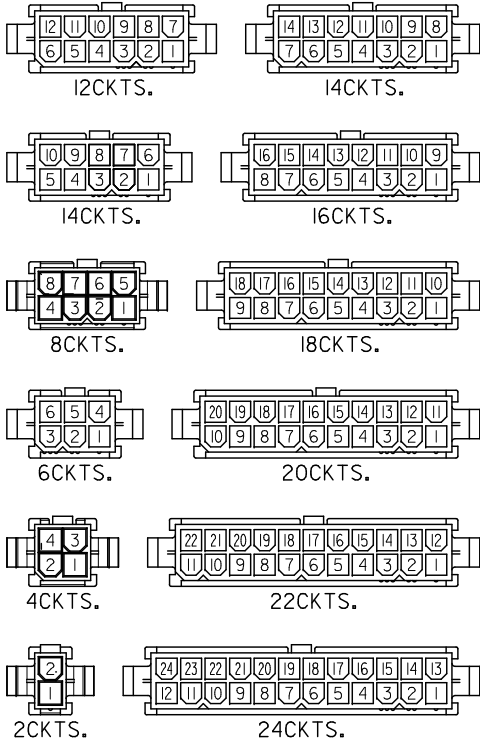
RECOMMENDED PANEL HOLE DIMENSIONS
 (THICKNESS : 0.8-2.0/0.32-.079)

52.1/2.051	51.0/2.244	51.6/2.031	46.2/1.819	24
47.9/1.886	52.8/2.079	47.4/1.866	42.0/1.654	22
43.7/1.720	48.6/1.915	43.2/1.701	37.8/1.488	20
39.5/1.555	44.4/1.748	39.0/1.535	33.6/1.323	18
35.3/1.390	40.2/1.583	34.8/1.370	29.4/1.158	16
31.1/1.224	36.0/1.417	30.6/1.205	25.2/0.992	14
26.8/1.055	31.8/1.252	26.4/1.039	21.0/0.827	12
22.6/0.890	27.6/1.087	22.2/0.874	16.8/0.661	10
18.4/0.724	23.4/0.921	18.0/0.709	12.6/0.496	8
14.2/0.559	19.2/0.756	13.8/0.543	8.4/0.331	6
10.0/0.394	15.0/0.591	9.6/0.378	4.2/0.165	4
5.8/0.228	10.8/0.425	5.4/0.213	—	2
				A
				CIRCUIT

REMOVED -04P-RE EC NO: UCP200-2477 DRAWN: JAGUILAR 2010/04/09 CHKD: BELL 2010/08/26 APPR: SMITH 2010/08/27	QUALITY SYMBOLS 	GENERAL TOLERANCES (UNLESS SPECIFIED):	DIMENSION STYLE MM/IN	SCALE 3:1	DESIGN UNITS METRIC	THIRD ANGLE PROJECTION																		
		<table border="1"> <tr> <th></th> <th>mm</th> <th>INCH</th> </tr> <tr> <td>4 PLACES</td> <td>±.005</td> <td>±.0002</td> </tr> <tr> <td>3 PLACES</td> <td>±.012</td> <td>±.0005</td> </tr> <tr> <td>2 PLACES</td> <td>±.030</td> <td>±.0016</td> </tr> <tr> <td>1 PLACE</td> <td>±.40</td> <td>±.0157</td> </tr> <tr> <td>ANGULAR</td> <td>± 3°</td> <td></td> </tr> </table>		mm	INCH	4 PLACES	±.005	±.0002	3 PLACES	±.012	±.0005	2 PLACES	±.030	±.0016	1 PLACE	±.40	±.0157	ANGULAR	± 3°		DRAWN BY H. HIRAMOTO 1988/10/14 CHECKED BY DATE Y. YAMADA 1988/10/21 APPROVED BY DATE M. ENOMOTO 1988/10/24	TITLE: NEW MINI-FIT CONNECTOR CRIMP PIN HOUSING MOLEX INCORPORATED DOCUMENT NO.: SD-5559-NP SHEET NO.: 1 OF 2		
			mm	INCH																				
		4 PLACES	±.005	±.0002																				
3 PLACES	±.012	±.0005																						
2 PLACES	±.030	±.0016																						
1 PLACE	±.40	±.0157																						
ANGULAR	± 3°																							
DRAFT WHERE APPLICABLE MUST REMAIN WITHIN DIMENSIONS			SEE CHART																					
THIS DRAWING CONTAINS INFORMATION THAT IS PROPRIETARY TO MOLEX INCORPORATED AND SHOULD NOT BE USED WITHOUT WRITTEN PERMISSION																								

12 11 10 9 8 7 6 5 4 3 2 1

13 12 11 10 9 8 7 6 5 4 3 2 1



CIRCUIT SIZE LAYOUT (SCALE : 2-1)

V-2 BLACK	
	24
	22
	20
	18
	16
	14
	12
	10
	8
	6
	4
	2
39-02-80655569-06P-BL	6
39-02-80455569-04P-BL	4
	2
EDP NO.	ENG. NO.

V-2 BLUE		V-2 RED		V-0 NATURAL		V-2 NATURAL					
	24			24	39-01-2246	5559-24P-210	24	39-01-2241	5559-24P	24	
	22			22	↑ -2226	↑ -22P-210	22	↑ -2221	↑ -22P	22	
	20			20	↑ -2206	↑ -20P-210	20	↑ -2201	↑ -20P	20	
	18			18	↑ -2186	↑ -18P-210	18	↑ -2181	↑ -18P	18	
	16			16	↑ -2166	↑ -16P-210	16	↑ -2161	↑ -16P	16	
	14			14	↑ -2146	↑ -14P-210	14	↑ -2141	↑ -14P	14	
	12			12	↑ -2126	↑ -12P-210	12	↑ -2121	↑ -12P	12	
	10			10	↑ -2106	↑ -10P-210	10	↑ -2101	↑ -10P	10	
	8			8	↑ -2086	↑ -08P-210	8	↑ -2081	↑ -08P	8	
	6			6	↑ -2066	↑ -06P-210	6	↑ -2061	↑ -06P	6	
	4			4	↑ -2046	↑ -04P-210	4	↑ -2041	↑ -04P	4	
	2			2	↑ 39-01-2026	↑ 5559-02P-210	2	↑ 39-01-2021	↑ 5559-02P	2	
39-02-80465569-04P-BU	4			4	↑ -2046	↑ -04P-210	4	↑ -2041	↑ -04P	4	
	2			2	↑ 39-01-2026	↑ 5559-02P-210	2	↑ 39-01-2021	↑ 5559-02P	2	
EDP NO.	ENG. NO.	CIRCUIT	EDP NO.	ENG. NO.	CIRCUIT	EDP NO.	ENG. NO.	CIRCUIT	EDP NO.	ENG. NO.	CIRCUIT

SEE SHEET 1 EC NO. UCF2010-2477 DRAWN: JAGUILAR 2010/04/09 CHKD: BELL 2010/08/26 APPR: SMITH 2010/08/27	QUALITY SYMBOLS	GENERAL TOLERANCES (UNLESS SPECIFIED)	DIMENSION STYLE		SCALE	DESIGN UNITS	THIRD ANGLE PROJECTION
	▽=0	mm INCH	MM/IN		2:1	METRIC	☉
	▽=0	4 PLACES ±.005 ±.005	DRAWN BY	DATE	TITLE		
	▽=0	3 PLACES ±.012 ±.012	H. HIRAMOTO	1988/10/14	NEW MINI. FIT CONNECTOR CRIMP PIN HOUSING		
▽=0	2 PLACES ±.030 ±.016	CHECKED BY	DATE	MATERIAL NO.			SHEET NO.
▽=0	1 PLACE ±.040 ±.040	Y. YAMADA	1988/10/21	M. ENOMOTO 1988/10/24			2 OF 2
	ANGULAR ± 3°	APPROVED BY	DATE	DOCUMENT NO.			
		M. ENOMOTO	1988/10/24	SD-5559-NP			
	DRAFT WHERE APPLICABLE MUST REMAIN WITHIN DIMENSIONS	SIZE		THIS DRAWING CONTAINS INFORMATION THAT IS PROPRIETARY TO MOLEX INCORPORATED AND SHOULD NOT BE USED WITHOUT WRITTEN PERMISSION			