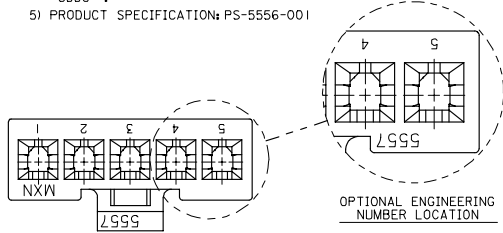


13 12 11 10 9 8 7 6 5 4 3 2 1

**NOTES:**

- 1) MATERIAL:  
 \*BLANK\*: NYLON 6/6, 94V-2, COLOR: NATURAL.  
 210 : NYLON 6/6, 94V-0, COLOR: NATURAL.  
 210-BL : NYLON 6/6, 94V-0, COLOR: BLACK.
- 2) PART MATES WITH MOLEX PLUG #5559-\*, VERTICAL HEADER #5566-\*, AND RIGHT-ANGLE HEADER #5569-\*.
- 3) PART IS DESIGNED IN METRIC.
- 4) PART IS FOR USE WITH MOLEX FEMALE TERMINAL #5556-\*.
- 5) PRODUCT SPECIFICATION: PS-5556-001

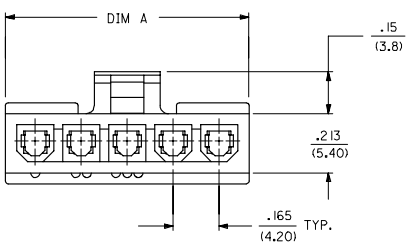
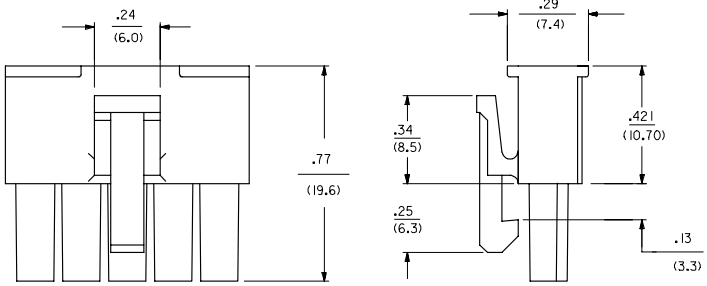
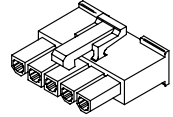


CKT SIZE	DIM A
2	.378 (9.60)
4	.709 (18.00)
5	.874 (22.20)
6	1.039 (26.40)
7	1.205 (30.60)
8	1.370 (34.80)
9	1.535 (39.00)
10	1.701 (43.20)
11	1.866 (47.40)
12	2.031 (51.60)

PART NUMBER	ENG. NUMBER	CKT. SIZE	MATERIAL (SEE NOTE 1.)
39-01-4020	5557-02R2	2	94V-2
39-01-4021	5557-02R2-210	2	94V-0
39-01-4040	5557-04R2	4	94V-2
39-01-4041	5557-04R2-210	4	94V-0
39-01-4050	5557-05R2	5	94V-2
39-01-4051	5557-05R2-210	5	94V-0
50-30-4447	5557-05R2-210-BL	5	94V-0
39-01-4060	5557-06R2	6	94V-2
39-01-4061	5557-06R2-210	6	94V-0
39-01-4070	5557-07R2	7	94V-2
39-01-4071	5557-07R2-210	7	94V-0
39-01-4080	5557-08R2	8	94V-2
39-01-4081	5557-08R2-210	8	94V-0
39-01-4090	5557-09R2	9	94V-2
39-01-4091	5557-09R2-210	9	94V-0
39-01-4100	5557-10R2	10	94V-2
39-01-4101	5557-10R2-210	10	94V-0
39-01-4110	5557-11R2	11	94V-2
39-01-4111	5557-11R2-210	11	94V-0
39-01-4120	5557-12R2	12	94V-2
39-01-4121	5557-12R2-210	12	94V-0

**LEGEND:**

CKT. SIZE (02, 04-12)  
 RECEPTACLE (SINGLE ROW)  
 MATERIAL OPTION# (SEE NOTE 1)  
 COLOR:  
 \*BLANK\* = NATURAL  
 \*BL\* = BLACK



ADD'D 5557-05R2-210-BL EC NO: UCP2006-0276 DRWING NO: 20050809 CHK'D: PULGAR 20050809 APPR: JOMERIC 20050811	QUALITY SYMBOLS ▽=0 ▽=0	GENERAL TOLERANCES (UNLESS SPECIFIED) 4 PLACES ±.000 ±.000 3 PLACES ±.005 ±.010 2 PLACES ±.025 ±.015 1 PLACE ±.038 ±.000 ANGULAR ±1/2°	DIMENSION STYLE IN/MM DRAWN BY DATE KSS 2/15/89 CHECKED BY DATE R/JF 2/15/89 APPROVED BY DATE RAS 2/15/89	SCALE 4:1 DESIGN UNITS INCH THIRD ANGLE PROJECTION	TITLE MINI-FIT JR. RECEPTACLE (SINGLE ROW)	
	MATERIAL NO. SEE CHART DOCUMENT NO. SD-5557-NR2* SHEET NO. 1 OF 1		MOLEX INCORPORATED			
	DRAFT WHERE APPLICABLE MUST REMAIN WITHIN DIMENSIONS					
	THIS DRAWING CONTAINS INFORMATION THAT IS PROPRIETARY TO MOLEX INCORPORATED AND SHOULD NOT BE USED WITHOUT WRITTEN PERMISSION					

tb\_frame\_C\_P\_ME\_T  
 Rev. D 2004/04/02

12 11 10 9 8 7 6 5 4 3 2 1