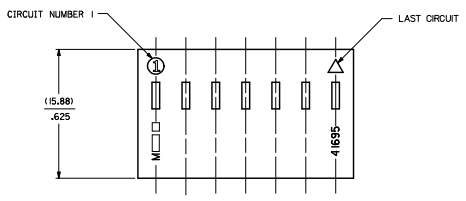
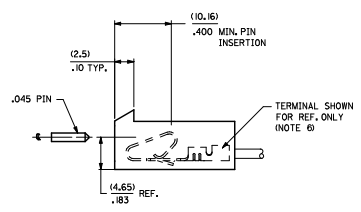
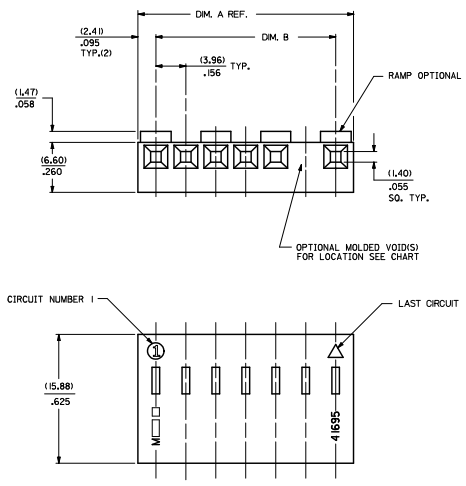


20 19 18 17 16 15 14 13 12 11 10 9 8 7 6 5 4 3 2 1



NO. OF CKTS SEE NOTE 10	DIM. A	DIM. B
1	NOT AVAILABLE	
2	(8.79) .348	(3.96±.05) .156±.002
3	(12.75) .502	(7.82±.08) .312±.003
4	(16.71) .665	(11.68±.08) .468±.003
5	(20.67) .814	(15.55±.08) .624±.003
6	(24.64) .970	(19.41±.10) .780±.004
7	(28.60) 1.126	(23.27±.10) .936±.004
8	(32.56) 1.282	(27.14±.10) 1.092±.004
9	(36.53) 1.438	(31.00±.10) 1.248±.004
10	(40.49) 1.594	(34.86±.10) 1.404±.006
11	(44.45) 1.750	(38.72±.15) 1.560±.006
12	(48.41) 1.906	(42.58±.15) 1.716±.006
13	(52.37) 2.062	(46.44±.15) 1.872±.006
14	(56.34) 2.218	(50.30±.15) 2.028±.007
15	(60.30) 2.374	(54.17±.18) 2.184±.007

41695 - * - * N - ##

MATERIAL CODE
N=MOLDED NATURAL
G=GLOW WIRE

CODE	RAMP	POLARIZING RES	PACKAGING
A	NO	NO	BULK PER PK-41695-001
B	YES	NO	BULK PER PK-41695-002
D	YES	YES	BULK PER PK-41695-003
G	END RAMP ONLY	YES	BULK PER PK-41695-003

VOID CODE
BLANK/NO VOIDS
NO. NO. CORRESPONDS TO CKT. NO. VOIDED
MULT. VOIDS START WITH 51

NO. OF CKTS.
SEE NOTE 10

- NOTES:
- MATERIAL: N - GLASS FILLED POLYESTER, UL94V-0, MOLDED NATURAL
G - UL94V-0 PA6 NYLON, IEC 60335-1, 4th EDITION GLOW WIRE CAPABLE.
COLOR: BLACK
 - FINISH: SEE TERMINAL DRAWINGS
 - PRODUCT SPECIFICATION: PS-08-50 AND PS-40-02
 - PACKAGING INFORMATION: SEE LEGEND
 - MATES WITH (3.96)/.156 CENTER HEADERS AND (1.44)/.045 SQUARE OR ROUND PINS
 - HOUSING ACCEPTS STANDARD TERMINAL NOS.:
2478 (18-24 AWG) WITH (2.79)/.110 MAX. INSULATION DIA.
2578 (22-26 AWG) WITH (1.65)/.065 MAX. INSULATION DIA.
OR TRIFURCON TERMINAL NOS.:
6438 (18-22 AWG) WITH (2.79)/.110 MAX. INSULATION DIA.
6838 (18-24 AWG) WITH (2.79)/.110 MAX. INSULATION DIA.
7258 (22-26 AWG) WITH (1.65)/.065 MAX. INSULATION DIA.
 - BOW (.006 MM/MIL) / .005 IN/AN
 - 10.13/1.005 MAX. FLASH ALLOWED ALONG DIMENSION B AND IN LOCKING WINDOW.
 - THIS PART CONFORMS TO CLASS B REQUIREMENTS OF COSMETIC SPECIFICATION PS-5499-002.
 - CIRCUIT SIZES 13 THROUGH 15 ARE NOT AVAILABLE IN G MATERIAL.

ADV/DES/LETE EUC/DES/LETE H/CHK/DES/LETE CHY/DES/LETE APPROV/SH/TH	QUALITY SYMBOLS	GENERAL TOLERANCES (UNLESS SPECIFIED)	DIMENSION STYLE	SCALE	DESIGN UNITS	THIRD ANGLE PROJECTION	
	▽=0 ▽=0 ▽=0	4 PLACES ±.--- INCH 3 PLACES ±.--- ±.010 2 PLACES ±.025 ±.014 1 PLACE ±.0.36 ±.--- ANGULAR ±1/2°	MM/IN DRAWN BY SKOWRONSKI CHECKED BY PATEL APPROVED BY LENZ	DATE 04/05/86 DATE 04/05/86 DATE 04/05/86	4:1	INCH	(3.96)/.156 CENTERLINE CONNECTOR HOUSING FOR KK CRIMP TERMINALS
	DRAFT WHERE APPLICABLE MUST REMAIN WITHIN DIMENSIONS	SEE CHART	PATENT NO.	DOCUMENT NO.	MOLEX INCORPORATED		
					SD-41695	1 OF 3	THIS DRAWING CONTAINS INFORMATION THAT IS PROPRIETARY TO MOLEX INCORPORATED AND SHOULD NOT BE USED WITHOUT WRITTEN PERMISSION

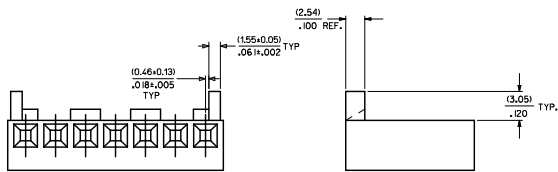
3 H
2 H
1 H
BHT/REV

41695-N-AN**			41695-N-BN**		
PART NO.	ENG. NO.	VOIDS	PART NO.	ENG. NO.	VOIDS
09-50-8020	41695-N-A2		09-50-8021	41695-N-B2	
09-50-8030	41695-N-A3		09-50-8031	41695-N-B3	
09-50-8040	41695-N-A4		09-50-8041	41695-N-B4	
09-50-8050	41695-N-A5		09-50-8051	41695-N-B5	
09-50-8060	41695-N-A6		09-50-8061	41695-N-B6	
09-50-8070	41695-N-A7		09-50-8071	41695-N-B7	
09-50-8080	41695-N-A8		09-50-8081	41695-N-B8	
09-50-8090	41695-N-A9		09-50-8091	41695-N-B9	
09-50-8100	41695-N-A10		09-50-8101	41695-N-B10	
09-50-8110	41695-N-A11		09-50-8111	41695-N-B11	
09-50-8120	41695-N-A12		09-50-8121	41695-N-B12	
09-50-9085	41695-N-A8-2	2	09-50-8131	41695-N-B13	
41695-0001	41695-N-A6-3	3	09-50-9141	41695-N-B14	
41695-0002	41695-N-A5-4	4	09-50-8151	41695-N-B15	
			09-50-9030	41695-N-B3-2	2
				41695-N-B5-2	2
				41695-N-B9-2	2
				41695-N-B11-2	2
			09-50-9121	41695-N-B12-2	2
				41695-N-B14-2	2
			09-50-9150	41695-N-B15-14	14
			09-50-9060	41695-N-B6-5	5
			09-50-9070	41695-N-B7-6	6
			09-50-9071	41695-N-B7-2	2
			09-50-9040	41695-N-B4-3	3
			09-50-9090	41695-N-B9-7	7
				41695-N-B14-13	13
			09-50-9136	41695-N-B13-5	5
			09-50-9137	41695-N-B13-8	8
			09-50-9050	41695-N-B5-1	2,4
			09-50-9061	41695-N-B6-3	3
			09-50-9080	41695-N-B8-2	2

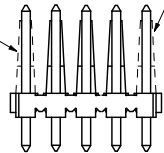
41695-G-AN**			41695-G-BN**		
PART NO.	ENG. NO.	VOIDS	PART NO.	ENG. NO.	VOIDS
41695-2032	41695-G-A02		41695-2000	41695-G-B02	
41695-2033	41695-G-A03		41695-2005	41695-G-B03	
41695-2034	41695-G-A04		41695-2002	41695-G-B04	
41695-2035	41695-G-A05		41695-2006	41695-G-B05	
41695-2036	41695-G-A06		41695-2007	41695-G-B06	
41695-2037	41695-G-A07		41695-2008	41695-G-B07	
41695-2038	41695-G-A08		41695-2009	41695-G-B08	
41695-2039	41695-G-A09		41695-2010	41695-G-B09	
41695-2040	41695-G-A10		41695-2011	41695-G-B10	
41695-2041	41695-G-A11		41695-2012	41695-G-B11	
41695-2042	41695-G-A12		41695-2013	41695-G-B12	

OPTION CODE D

RAMP WITH POLARIZING PEGS (RIBS)



WHEN MATING VERSIONS D AND G WITH THE BREAKAWAY FRICTION LOCK HEADER SERIES OR THE POLARIZING HEADER SERIES THE END FRICTION LOCK OR POLARIZING WALL MUST BE REMOVED

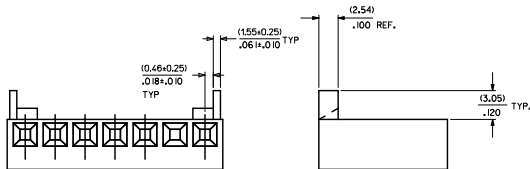


WHEN MATING WITH BREAKAWAY HEADERS THE FRICTION LOCK WALL MUST BE REMOVED

SEE SHEET 1 EL CODIS - MEXICO - 2008 H. CHOMSKY / PFER CHYKORANDERSON APPROVALS: SHH DATE: 2011/07/08 DATE: 2011/07/08 DATE: 2011/07/13	QUALITY SYMBOLS ∇=0 ∇=0 ∇=0	GENERAL TOLERANCES (UNLESS SPECIFIED) mm INCH 4 PLACES ± --- ± --- 3 PLACES ± --- ± --- 2 PLACES ± --- ± --- 1 PLACE ± --- ± --- ANGULAR ±1/2°	DIMENSION STYLE MM/IN DRAWN BY SAMIEC CHECKED BY PATL APPROVED BY LENZ DATE: 09/22/86 DATE: 09/22/86 DATE: 09/22/86	SCALE 4:1 DESIGN UNITS INCH THIRD ANGLE PROJECTION
	(3.96) .156 CENTERLINE CONNECTOR HOUSING FOR KK CORP TERMINAL			
	MATERIAL NO. SEE CHART DOCUMENT NO. SD-41695 INCORPORATED AND SHOULD NOT BE USED WITHOUT WRITTEN PERMISSION			

OPTION CODE G

SAME AS OPTION D ONLY WITHOUT CENTER RAMPS



41695-N-DN-*		
PART NO.	ENG. NO.	VOIDS
09-50-8023	41695-N-D2	
09-50-8033	41695-N-D3	
09-50-8043	41695-N-D4	
09-50-8053	41695-N-D5	
09-50-8063	41695-N-D6	
09-50-8073	41695-N-D7	
09-50-8083	41695-N-D8	
09-50-8093	41695-N-D9	
09-50-8103	41695-N-D10	
09-50-8113	41695-N-D11	
09-50-8123	41695-N-D12	
09-50-8133	41695-N-D13	
09-50-8143	41695-N-D14	
09-50-8153	41695-N-D15	
	41695-N-D15-12	12
09-50-8063	41695-N-D5-2	2
09-50-8094	41695-N-D9-3	3
09-50-9033	41695-N-D3-2	2
09-50-9043	41695-N-D4-2	2
09-50-9063	41695-N-D6-2	2
09-50-9013	41695-N-D7-2	2
09-50-9044	41695-N-D4-3	3
41695-0003	41695-N-D07-5	5

41695-N-GN-*		
PART NO.	ENG. NO.	VOIDS
	NOT AVAILABLE	
	NOT AVAILABLE	
	NOT AVAILABLE	
	NOT AVAILABLE	
09-50-8055	41695-N-G5	
	41695-N-G6	
	41695-N-G7	
	41695-N-G8	
	41695-N-G9	
	41695-N-G10	
	41695-N-G11	
	41695-N-G12	
	41695-N-G13	
09-50-8145	41695-N-G14	
	41695-N-G15	

41695-G-DN-*		
PART NO.	ENG. NO.	VOIDS
41695-2001	41695-G-D02	
41695-2004	41695-G-D03	
41695-2021	41695-G-D04	
41695-2022	41695-G-D05	
41695-2023	41695-G-D06	
41695-2024	41695-G-D07	
41695-2025	41695-G-D08	
41695-2026	41695-G-D09	
41695-2027	41695-G-D10	
41695-2028	41695-G-D11	
41695-2029	41695-G-D12	

41695-G-GN-*		
PART NO.	ENG. NO.	VOIDS
	NOT AVAILABLE	
	NOT AVAILABLE	
41695-2012	41695-G-G04	
41695-2015	41695-G-G05	
41695-2016	41695-G-G06	
41695-2017	41695-G-G07	
41695-2018	41695-G-G08	
41695-2019	41695-G-G09	
41695-2020	41695-G-G10	
41695-2030	41695-G-G11	
41695-2031	41695-G-G12	

SEE SHEET 1 41695-2028 H. CHYKAMPER 2011/01/08 CHYKAMPER 2011/01/08 APPROVAL 2011/01/21	QUALITY SYMBOLS	GENERAL TOLERANCES (UNLESS SPECIFIED)	DIMENSION STYLE	SCALE	DESIGN UNITS	THIRD ANGLE PROJECTION
	▽=0	4 PLACES ± --- INCH	MM/IN	4:1	INCH	
	▽=0	3 PLACES ± --- INCH				
	▽=0	1 PLACE ± --- INCH				
		ANGULAR ±1/2°				
		DRAFT WHERE APPLICABLE MUST REMAIN WITHIN DIMENSIONS	SEE CHART			
					(3,96)/.156 CENTERLINE CONNECTOR HOUSING FOR KK CRIMP TERMINAL	
					MOLEX INCORPORATED	
					SD-41695	SHEET NO. 3 OF 3
					THIS DRAWING CONTAINS INFORMATION THAT IS PROPRIETARY TO MOLEX INCORPORATED AND SHOULD NOT BE USED WITHOUT WRITTEN PERMISSION	