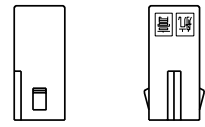
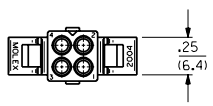
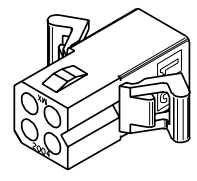
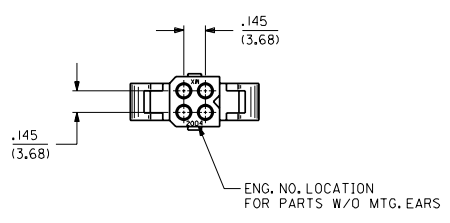
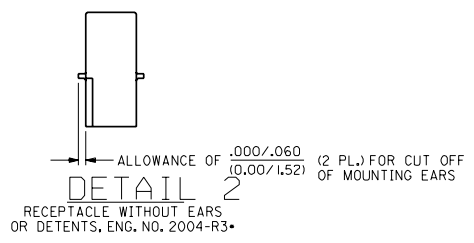
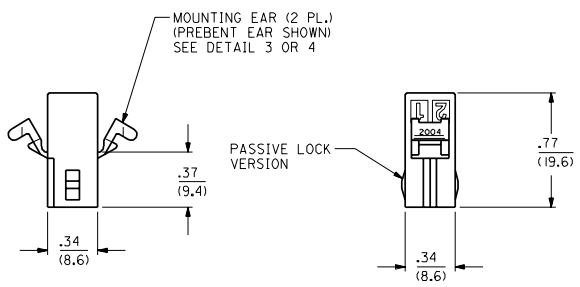
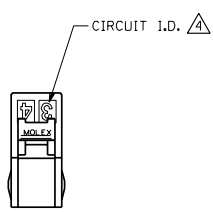


13 12 11 10 9 8 7 6 2004 4 3 2 1



**DETAIL 1**  
POSITIVE LOCK VERSION  
ENG. NO. 2004-R5\*



**RECEPTACLE HOUSING**

		DIMENSIONS SHOWN: METRIC INCH		▽ = 0 ▼ = 0		REVISE ONLY ON CAD SYSTEM	
		UNLESS OTHERWISE SPECIFIED:					
		TOLERANCES ANGULAR ± °					
		INCH		METRIC			
		F PLACE ± .010		---			
		D PLACE ± .014		+ 0.25			
		L PLACE ---		± 0.36			
		DRAFT WHERE APPLICABLE MUST		REMAIN WITHIN DIMENSIONS			
		DRAWN BY: GJC		ENVD. BY: RW		PART NO. SD-2004-*	
		APP'D. BY: RS		SCALE: 4:1		FILE NAME: H2004R4-200	
LTR. REVISIONS		LTR. REVISIONS		DATE: 8/27/91		SHEET NO. 2	

13 12 11 10 9 8 7 6 5 4 3 2 1

PLUG		RECEPTACLE		
PART NO.	ENG. NO.	PART NO.	ENG. NO.	
03-06-2043	2004-P	03-06-1043	2004-R	
03-06-7043	2004-PBK	03-06-6043	2004-RBK	
03-06-2044	2004-PI	03-06-1044	2004-RI	
03-06-7044	2004-PIBK	03-06-6044	2004-RIBK	<b>OBSOLETE</b>
PRELIMINARY	2004-P2	03-06-1046	2004-R3	<b>OBSOLETE</b>
03-06-7045	2004-PIRD	03-06-1052	2004-R5	<b>OBSOLETE</b>
03-06-7046	2004-PIBN	03-06-6052	2004-R5BK	<b>OBSOLETE</b>
03-06-7047	2004-PIOR	PRELIMINARY	2004-R2	
		03-06-6045	2004-RRD	<b>OBSOLETE</b>
		03-06-6046	2004-RBN	<b>OBSOLETE</b>
		03-06-6048	2004-ROR	<b>OBSOLETE</b>

**LEGEND:**

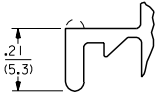
2004-\*\*\*

P = PLUG  
R = RECEPTACLE

BLANK = WITH STANDARD EARS  
1 = WITHOUT EARS  
2 = WITH PREBENT EARS  
3 = W/O EARS, W/O DETENTS  
5 = W/O EARS, WITH POSITIVE LOCKS

**COLOR:**

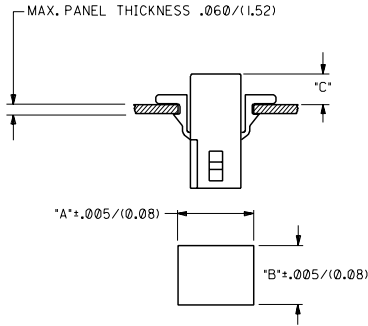
BLANK = NATURAL  
AM=AMBER BK=BLACK BU=BLUE  
BN=BROWN GY=GRAY GN=GREEN  
OR=ORANGE RD=RED YW=YELLOW



**DETAIL 3**

STANDARD MOUNTING EARS  
(SCALE 4:1)

**NOTE:**  
THIS DRAWING ENCOMPASSES ALL 2004  
SERIES HOUSINGS EXCEPT 2004-R7.



**NOTES:**

- MATERIAL - NYLON TYPE 6/6, 94V-2
  - THIS PRODUCT COMPLIES WITH MOLEX PRODUCT SPEC 02-06.
  - HOUSINGS FOR USE WITH MOLEX .062/(1,57) DIA. SERIES TERMINALS.
- ⚠️ CIRCUIT I.D. NUMBERS ON SIDE OF HOUSING APPEAR ON PARTS FROM TOOLS BUILT AFTER 8/26/91.
- ⚠️ THIS DIMENSION .020/(0,51) LESS ON TOOLS BUILT PRIOR TO 8/26/91.



**DETAIL 4**

PREBENT MOUNTING EARS  
(SCALE 4:1)

**RECOMMENDED HOLE PATTERN**

HOUSING	DIM. "A"	DIM. "B"	PREBENT EAR DIM. "C"	STD. EAR DIM. "C"
PLUG	.615 (15,62)	.465 (11,81)	.26 (6,6)	.26 (6,6)
RECEPTACLE	.506 (12,85)	.400 (10,16)	.24 (6,1)	.24 (6,1)

DIMENSIONS SHOWN IN METRIC (INCH UNLESS OTHERWISE SPECIFIED)		▽ = 0	▽ = 0	REVISE ONLY ON CAD SYSTEM
TOLERANCES ANGULAR ± .5° TO 10°		TITLE		
INCH METRIC		PLUG AND RECEPTACLE HOUSINGS, 4 CIRCUIT .062/(1,57) DIA.		
2 PLACE ± .010	---	MOLEX INCORPORATED SHEET NO. 3 DATE 8/28/91		
1 PLACE ± .014 ± 0,25	---	U.S.A.		
1 PLACE --- ± 0,36	---	PART NO. SD-2004-*		
DRAFT WHERE APPLICABLE MUST REMAIN WITHIN DIMENSIONS		DRAWN BY JJS		
APP'D. BY RS		SCALE 2 : 1		
LTR. REVISIONS		LTR. REVISIONS		