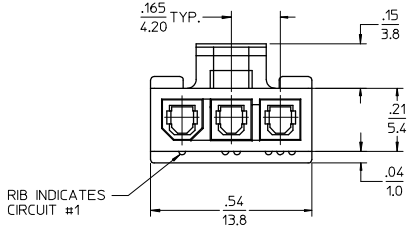
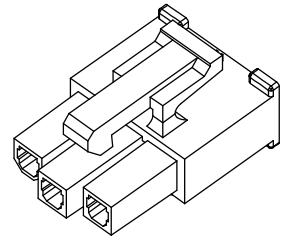
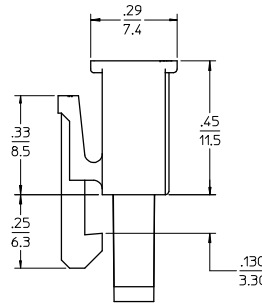
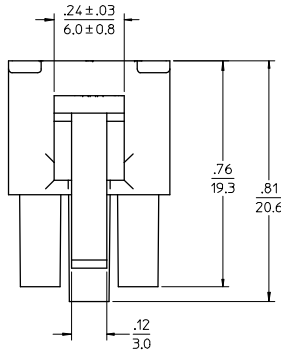
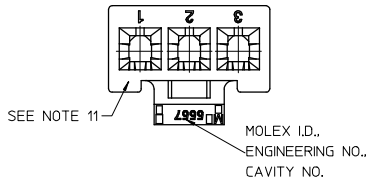
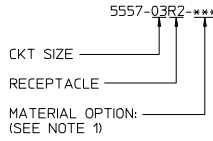


PART NO.	ENG. NO.	CKT SIZE	MATERIAL (SEE NOTE 1)
39-01-4030	5557-03R2	3	UL 94V-2
39-01-4031	5557-03R2-210	3	UL 94V-0
39-01-5039	5557-03R2-BL	3	UL 94V-2, BLACK

LEGEND



RIB INDICATES CIRCUIT #1

NOTES:

- MATERIAL:  
 \*BLANK\*=NYLON 6/6, UL94V-2, COLOR: NATURAL  
 \*210\*=NYLON 6/6, UL94V-0, COLOR: NATURAL  
 \*BL\*=NYLON 6/6, UL94V-2, COLOR: BLACK
- FINISH: NOT APPLICABLE
- PRODUCT SPECIFICATION: PS-5556-001
- PACKAGING: PK-5557-002
- PART MATES WITH MOLEX RIGHT ANGLE HEADER #5569-03A\*.
- VERTICAL HEADER #5566-03A3\* AND PLUG #5559-03P\*.
- PART IS NOT DESIGNED FOR CURRENT SHARING.
- WHEN MATING WITH ANOTHER CONNECTOR, THE CENTER CIRCUIT WILL "MAKE FIRST AND BREAK LAST".
- PART IS NOT DESIGNED FOR CURRENT SHARING.
- CONNECTOR ASSEMBLIES ARE NOT TO BE MATED OR UNMATED WHILE CIRCUITS ARE LIVE.
- WIRES ARE TO BE DRESSED IN SUCH A MANNER TO ALLOW THE TERMINALS TO FLOAT FREELY IN THE POCKET.
- "MX" TRADEMARK MAY BE LOCATED ON LATCH OR SURFACE INDICATED. CAVITY NO. MAY BE LOCATED ON EITHER SIDE OF ENGINEERING NO. ON LATCH.
- PART CONFORMS TO CLASS "B" REQUIREMENTS OF COSMETIC SPECIFICATION PS-45499-002.

REV	DESCRIPTION	QUALITY SYMBOLS		GENERAL TOLERANCES (UNLESS SPECIFIED)		DIMENSION STYLE	SCALE	DESIGN UNITS	THIRD ANGLE PROJECTION
		mm	INCH	mm	INCH	IN/MM	4:1	METRIC	☉
11	REVISE NOTE 11	4 PLACES	± .00	± .00	± .00	DRAWN BY	DATE	TITLE	3 CIRCUIT RECEPTACLE, (MINI-FIT JR.) (MAKE-FIRST/BREAK-LAST)
10	EC NO: UCP2007-2526	3 PLACES	± .01	± .01	± .01	GEP	1990/10/02	MOLEX INCORPORATED	
9	DRWING:GVERILL	2 PLACES	± 0.25	± .015	± .015	CHECKED BY	DATE		
8	2008/08/19	1 PLACE	± 0.38	± .00	± .00	RJF	1990/10/02		
7	CHKD:JBELL	ANGULAR ± 1/2°				APPROVED BY	DATE		
6	2008/08/22					RAS	1990/10/02		
5	APP:ESMITH	DRAFT WHERE APPLICABLE MUST REMAIN WITHIN DIMENSIONS		SEE CHART		MATERIAL NO.	DOCUMENT NO.	SHEET NO.	
4							SD-5557-03R2*	1 OF 1	
3						THIS DRAWING CONTAINS INFORMATION THAT IS PROPRIETARY TO MOLEX INCORPORATED AND SHOULD NOT BE USED WITHOUT WRITTEN PERMISSION			