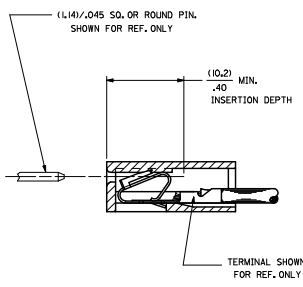
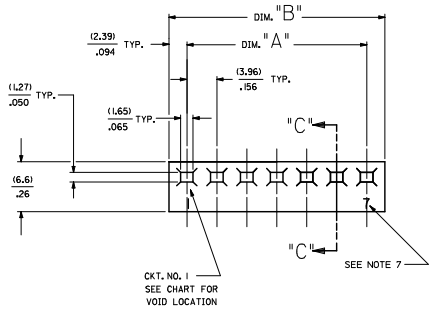


20 19 18 17 16 15 14 13 12 11 10 9 8 7 6 5 4 3 2 1



NO. OF CKT'S.	DIM. A	DIM. B
1	-----	(4.78±.18)
2	(3.96±.13)	(8.74±.18)
3	(7.92±.13)	(12.70±.18)
4	(11.89±.13)	(16.66±.18)
5	(15.85±.13)	(20.62±.18)
6	(19.81±.13)	(24.59±.18)
7	(23.77±.13)	(28.55±.18)
8	(27.74±.25)	(32.51±.30)
9	(31.70±.25)	(36.47±.30)
10	(35.66±.25)	(40.44±.30)
11	(39.62±.25)	(44.40±.30)
12	(43.59±.25)	(48.36±.30)
13	(47.55±.30)	(52.32±.36)
14	(51.51±.36)	(56.29±.41)
15	(55.47±.36)	(60.25±.41)
16	(59.44±.36)	(64.21±.41)
17	(63.40±.36)	(68.17±.41)
18	(67.36±.36)	(72.14±.41)
19	(71.32±.36)	(76.10±.41)
20	(75.29±.46)	(80.06±.51)
21	(79.25±.46)	(84.02±.51)
22	(83.21±.46)	(87.99±.51)
23	(87.17±.46)	(91.95±.51)
24	(91.14±.46)	(95.91±.51)
	(3.588±.018)	(3.776±.020)

HOUSING OPTIONS

CODE	HOOKS	SIDE HOOKS	RAMP
BLANK	NONE	NONE	NONE
A	NONE	YES	NONE
R	NONE	NONE	FRICTION
B	NONE	NONE	TYPE B
C	NONE	NONE	TYPE C

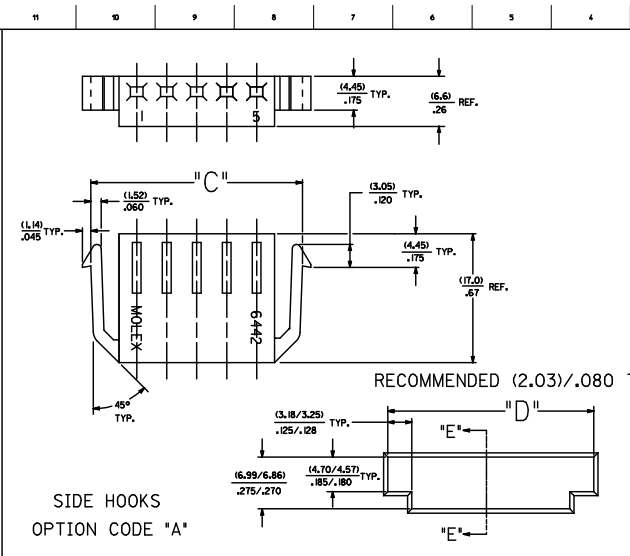
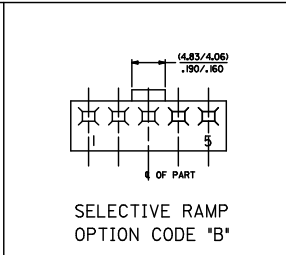
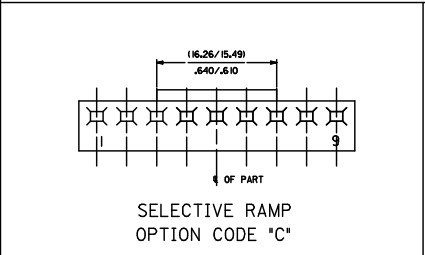
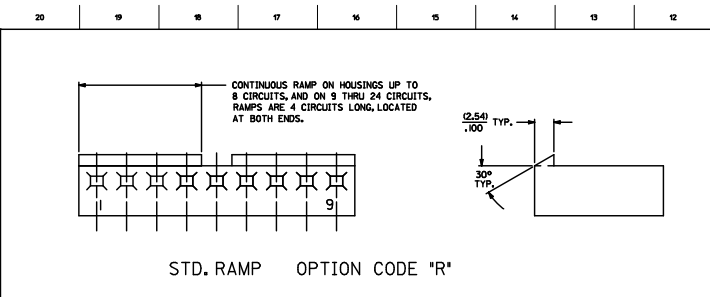
6442- * N * - * - *
 VOLTAGE RATING OPTION
 BLANK-NONE
 V= '250 VAC' ON HOUSING
 MAT'L. OPTION
 BLANK= MATERIAL A (SEE NOTE 1)
 MOLDED VOID CODE
 Z=NO VOIDS
 A=CKT. 1 VOID,
 B=CKT. 2 VOID, ETC.
 5=1ST MULTIPLE VOID,
 52=2ND MULTIPLE VOID, ETC.

- NOTES:
1. MATERIAL A: NYLON 6/6 UL94V-2. COLOR: NATURAL
 2. FINISH: N/A
 3. THIS PART COMPLIES WITH PRODUCT SPECIFICATION PS-40-02.
 4. SEE SHEET 2 FOR OPTIONS.
 5. HOUSING SHOWN ABOVE IS STANDARD HOUSING WITH NO OPTIONS.
 6. THIS HOUSING FOR USE WITH TERMINAL NO.
 - 6438-- (19-22 GA.) WITH (2.79)/.110 MAX. INSULATION DIA.
 - 6838-- (19-24 GA.) WITH (2.79)/.110 MAX. INSULATION DIA.
 - 7238-- (22-26 GA.) WITH (1.65)/.065 MAX. INSULATION DIA.
 7. CIRCUIT SIZE MOLDED ON 4 THRU 24 CIRCUIT HOUSINGS ONLY.
 8. THIS PART CONFORMS TO CLASS B REQUIREMENTS OF COSMETIC SPECIFICATION PS-45499-002.

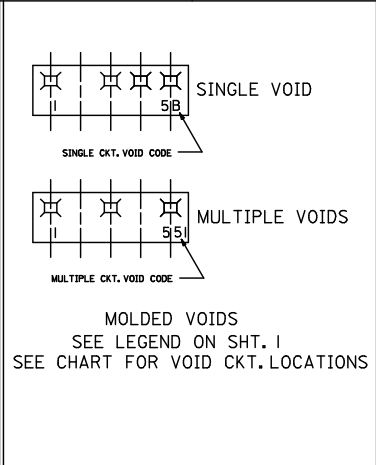
NO. OF CKT'S. ---

QUALITY SYMBOLS	GENERAL TOLERANCES (UNLESS SPECIFIED)		DIMENSION STYLE		SCALE	DESIGN UNITS	DESIGN UNITS	THIRD ANGLE PROJECTION
	MIN	INCH	MM/IN	INCH				
4 PLACES ± .010	± .010	± .010	POLGAR	1986/12/03	---	INCH	INCH	THIRD ANGLE PROJECTION
3 PLACES ± .010	± .010	± .010	CHECKED BY	DATE				
2 PLACES ± 0.25	± .014	± .014	PAIEL	1986/12/03	KK (3.96) .156 TRIFURCON CRIMP TERMINAL HOUSING 6442 SERIES			
1 PLACE ± 0.36	± .010	± .010	APPROVED BY	DATE	MOLEX INCORPORATED			
ANGULAR ± 1/2°			LENZ	1986/12/03	SD-6442			

DRAFT WHERE APPLICABLE MUST REMAIN WITHIN DIMENSIONS
 SEE CHART
 THIS DRAWING CONTAINS INFORMATION THAT IS PROPRIETARY TO MOLEX INCORPORATED AND SHOULD NOT BE USED WITHOUT WRITTEN PERMISSION



NO. OF CTS.	DIM. 'C'	DIM. 'D'
2	.1648/.15.60	(.15.47/.15.34)
3	.649/.614	.609/.604
4	(20.45/19.36)	(19.43/18.30)
5	.895/.770	.765/.760
6	(28.37/27.48)	(27.36/27.23)
7	1.117/1.082	1.077/1.072



QUALITY SYMBOLS	GENERAL TOLERANCES (UNLESS SPECIFIED)		DRAWN BY	DATE	TITLE	SCALE	DESIGN UNITS	THIRD ANGLE PROJECTION	
	MIN	INCH							
▽=0	4 PLACES ± .010	± .010	POLGAR	1986/12/05	KK (3.96)/156 TRIFURCON CRIMP TERMINAL HOUSING 6442 SERIES	---	INCH	☉	
▽=0	3 PLACES ± .025	± .014	PATEL	1986/12/05					
▽=0	1 PLACE ± 0.36	± .---	LENZ	1986/12/05					
DRAFT WHERE APPLICABLE MUST REMAIN WITHIN DIMENSIONS		SEE CHART		MATERIAL NO.		DOCUMENT NO.		SHEET NO.	
								2 OF 4	

15-frame_D.P.M.E.T Rev. E 2006/04/15

