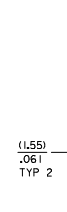
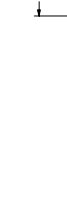


NO. OF CKT'S.	DIM. A	DIM. B	DIM. C
1	N/A	(5.10)	(7.16)
2	(2.54±.05)	.122	(9.70)
3	(5.08±.05)	.222	(12.24)
4	(7.62±.05)	.322	(14.78)
5	(10.16±.05)	.422	(17.32)
6	(12.70±.08)	.522	(19.86)
7	(15.24±.08)	.622	(22.40)
8	(17.78±.08)	.722	(24.94)
9	(20.32±.10)	.822	(27.48)
10	(22.86±.10)	.922	(30.02)
11	(25.40±.10)	1.022	(32.56)
12	(27.94±.13)	1.122	(35.10)
13	(30.48±.13)	1.222	(37.64)
14	(33.02±.13)	1.322	(40.18)
15	(35.56±.13)	1.422	(42.72)
16	(38.10±.15)	1.522	(45.26)
17	(40.64±.15)	1.622	(47.80)
18	(43.18±.15)	1.722	(50.34)
19	(45.72±.15)	1.822	(52.88)
20	(48.26±.15)	1.922	(55.42)
21	(50.80±.18)	2.022	(57.96)
22	(53.34±.18)	2.122	(60.50)
23	(55.88±.18)	2.222	(63.04)
24	(58.42±.18)	2.322	(65.58)
25	(60.96±.20)	2.422	(68.12)
26	(63.50±.20)	2.522	(70.66)
27	(66.04±.20)	2.622	(73.20)
28	(68.58±.20)	2.722	(75.74)
29	(71.12±.23)	2.822	(78.28)
30	(73.66±.23)	2.922	(80.82)
31	(76.20±.23)	3.022	(83.36)
32	(78.74±.23)	3.122	(85.90)
33	(81.28±.25)	3.222	(88.44)
34	(83.82±.25)	3.322	(90.98)
35	(86.36±.25)	3.422	(93.52)
36	(88.90±.25)	3.522	(96.06)
37	(91.44±.28)	3.622	(98.60)
38	(93.98±.28)	3.722	(101.14)
39	(96.52±.28)	3.822	(103.68)
40	(99.06±.28)	3.922	(106.22)
	(1.02)	(1.04)	(5.33)
	(.04)	(.06)	(.210)

2695-NR



2695-NRP



2695-NE



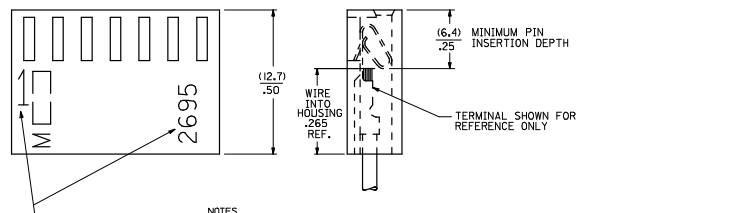
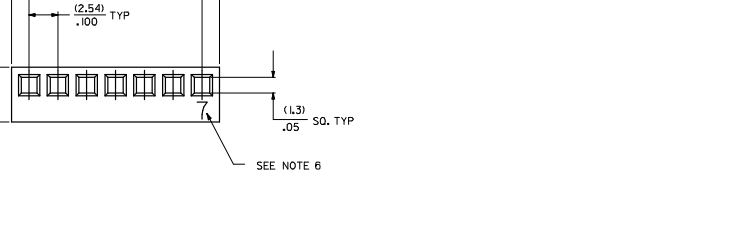
2695-NC*



2695 - N * *
NO. OF. CIRCUITS

VOID LOCATION SEE CHART

	MOUNTING EARS	RAMP	POLARIZING RIBS	DYED	MAT'L	RETENTION PEG
BLANK	NO	NO	NO	NO	NO	NO
E	YES	NO	NO	NO	NOTE 1A	NO
R	NO	YES	NO	NO	NOTE 1A	NO
RP	NO	YES	YES	NO	NOTE 1A	NO
RPD	NO	YES	YES	YES	NOTE 1A	NO
C	NO	NO	NO	NO	NOTE 1A	YES
RP-BK	NO	YES	YES	NO	NOTE 1B	NO



- NOTES
- MATERIAL A - NYLON UL94V-0, COLOR WHITE
B - NYLON UL94V-0, COLOR BLACK
 - FINISH SEE TERMINAL DRAWING
 - THIS HOUSING CONFORMS TO MOLEX PRODUCT SPECIFICATION PS-10-07.
 - PACKAGING N/A
 - HOUSING TO BE USED WITH CRIMP TYPE TERMINAL NUMBER 2759, 22-30 GAUGE WIRE WITH (1.57)±.062 DIAMETER MAXIMUM WIRE INSULATION.
 - LAST CIRCUIT NUMBER TO BE DESIGNATED ON 7 CKTS. AND HIGHER, EXCEPT WHEN 'N'X' APPEARS.
 - CIRCUIT NUMBER '1' AND ENGINEERING NUMBER TO APPEAR ON PARTS 3 CKTS. AND HIGHER.

3	AM3	REVISION	DATE	2008/07/25
2	AM3	REVISION	DATE	2008/07/25
1	AM4	REVISION	DATE	2008/07/25
SHT.	REV.	DESCRIPTION	DATE	2008/07/25

QUALITY SYMBOLS

GENERAL TOLERANCES (UNLESS SPECIFIED)

PLACES	±	MM	±	INCH	
4	PLACES	±	0.13	±	0.01
3	PLACES	±	0.25	±	0.01
1	PLACES	±	0.25	±	0.01

ANGULAR ±1/2°

DRAFT WHERE APPLICABLE MUST REMAIN WITHIN DIMENSIONS

DIMENSION STYLE: MM/IN

SCALE: ---

DESIGN UNITS: INCH

THIRD ANGLE PROJECTION

DRAWN BY: PEREZ-ARGUET 1988/02/25

CHECKED BY: PATEL 1988/02/25

APPROVED BY: LENZ 1988/02/25

MATERIAL NO. SEE CHART

DOCUMENT NO. SD-2695

SHEET NO. 1 OF 3

THIS DRAWING CONTAINS INFORMATION THAT IS PROPRIETARY TO MOLEX INCORPORATED AND SHOULD NOT BE USED WITHOUT WRITTEN PERMISSION

2695-NC*																	
PART NO.	ENG. NO.	VOIDS	PART NO.	ENG. NO.	VOIDS	PART NO.	ENG. NO.	VOIDS	PART NO.	ENG. NO.	VOIDS	PART NO.	ENG. NO.	VOIDS	PART NO.	ENG. NO.	VOIDS
N/A	2695-1C																
	2695-2C																
	2695-3C																
	2695-4C																
	2695-5C																
	2695-6C																
	2695-7C																
	2695-8C																
	2695-9C																
	2695-10C																
	2695-11C																
	2695-12C																
	2695-13C																
	2695-14C																
	2695-15C																
	2695-16C																
	2695-17C																
	2695-18C																
	2695-19C																
	2695-20C																
	2695-21C																
	2695-22C																
	2695-23C																
	2695-24C																
	2695-25C																
	2695-26C																
	2695-27C																
	2695-28C																
	2695-29C																
	2695-30C																
	2695-31C																
	2695-32C																
	2695-33C																
	2695-34C																
	2695-35C																
	2695-36C																
	2695-37C																
	2695-38C																
	2695-39C																
	2695-40C																

UPDATE TITLE BLOCK REC NO. LCP2004-1024 2005/11/01 DRAWN BY AM LCP2004-1024 2005/11/01 CHECKED BY AM LCP2004-1024 2005/11/01 APPROVED BY AM LCP2004-1024 2005/11/01	QUALITY SYMBOLS 	GENERAL TOLERANCES (UNLESS SPECIFIED) <table border="1"> <tr><th></th><th>mm</th><th>INCH</th></tr> <tr><td>4 PLACES</td><td>±.004</td><td>±.0001</td></tr> <tr><td>3 PLACES</td><td>±.005</td><td>±.0002</td></tr> <tr><td>2 PLACES</td><td>±.007</td><td>±.0003</td></tr> <tr><td>1 PLACE</td><td>±.010</td><td>±.0005</td></tr> </table>		mm	INCH	4 PLACES	±.004	±.0001	3 PLACES	±.005	±.0002	2 PLACES	±.007	±.0003	1 PLACE	±.010	±.0005	DIMENSION STYLE MM/IN DRAWN BY DATE SAM IEC 1989/10/30 CHECKED BY DATE PATEL 1989/10/30 APPROVED BY DATE LENZ 1989/10/30	SCALE --- DESIGN UNITS INCH THIRD ANGLE PROJECTION 	TITLE (2.54)/.100 HOUSING FOR KK CRIMP TYPE TERMINALS 2695 SERIES DRAWING MOLEX INCORPORATED MATERIAL NO. LCP2004-1024 DOCUMENT NO. SD-2695 SHEET NO. 3 OF 3
		mm	INCH																	
	4 PLACES	±.004	±.0001																	
	3 PLACES	±.005	±.0002																	
2 PLACES	±.007	±.0003																		
1 PLACE	±.010	±.0005																		
DRAFT WHERE APPLICABLE MUST REMAIN WITHIN DIMENSIONS		SEE CHART FOR DIMENSIONS THIS DRAWING CONTAINS INFORMATION THAT IS PROPRIETARY TO MOLEX INCORPORATED AND SHOULD NOT BE USED WITHOUT WRITTEN PERMISSION																		