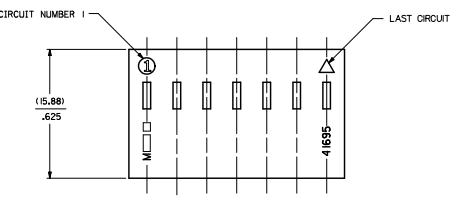
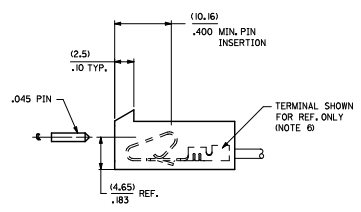
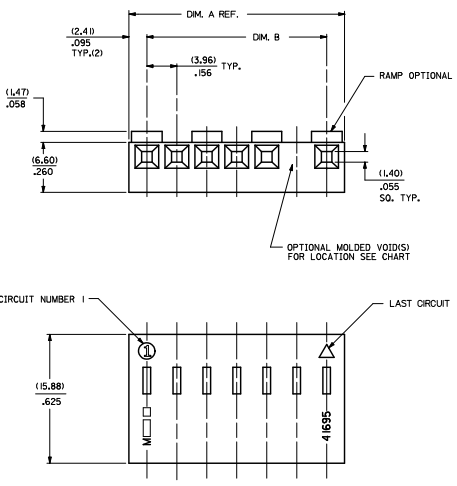


20 19 18 17 16 15 14 13 12 11 10 9 8 7 6 5 4 3 2 1



| NO. OF CKTS SEE NOTE 10 | DIM. A        | DIM. B                 |
|-------------------------|---------------|------------------------|
| 1                       | NOT AVAILABLE |                        |
| 2                       | (8.79) .348   | (3.96±.05) .156±.002   |
| 3                       | (12.75) .502  | (7.82±.08) .312±.003   |
| 4                       | (16.71) .658  | (11.68±.08) .468±.003  |
| 5                       | (20.67) .814  | (15.55±.08) .624±.003  |
| 6                       | (24.64) .970  | (19.41±.10) .780±.004  |
| 7                       | (28.60) 1.126 | (23.27±.10) .936±.004  |
| 8                       | (32.56) 1.282 | (27.14±.10) 1.092±.004 |
| 9                       | (36.53) 1.438 | (31.01±.10) 1.248±.004 |
| 10                      | (40.49) 1.594 | (34.88±.10) 1.404±.006 |
| 11                      | (44.45) 1.750 | (38.74±.15) 1.560±.006 |
| 12                      | (48.41) 1.906 | (42.61±.15) 1.716±.006 |
| 13                      | (52.37) 2.062 | (46.48±.15) 1.872±.006 |
| 14                      | (56.34) 2.218 | (50.34±.15) 2.028±.007 |
| 15                      | (60.30) 2.374 | (54.21±.18) 2.184±.007 |

41695 - \* - \* N - ##

MATERIAL CODE  
N=MOLDED NATURAL  
G=GLOW WIRE

| CODE | RAMP          | POLARIZING RES | PACKAGING             |
|------|---------------|----------------|-----------------------|
| A    | NO            | NO             | BULK PER PK-41695-001 |
| B    | YES           | NO             | BULK PER PK-41695-002 |
| D    | YES           | YES            | BULK PER PK-41695-003 |
| G    | END RAMP ONLY | YES            | BULK PER PK-41695-003 |

VOID CODE  
BLANK=NO VOIDS  
NO.=NO. CORRESPONDS TO CKT. NO. VOIDED  
MULT. VOIDS=START WITH 51

NO. OF CKTS.  
SEE NOTE 10

- NOTES:
- MATERIAL: N - GLASS FILLED POLYESTER, UL94V-0, MOLDED NATURAL  
G - UL94V-0 PA6 NYLON, IEC 60335-1, 4th EDITION GLOW WIRE CAPABLE.  
COLOR: BLACK
  - FINISH: SEE TERMINAL DRAWINGS
  - PRODUCT SPECIFICATION: PS-08-50 AND PS-40-02
  - PACKAGING INFORMATION: SEE LEGEND
  - MATES WITH (3.96)/.156 CENTER HEADERS AND (1.41)/.045 SQUARE OR ROUND PINS
  - HOUSING ACCEPTS STANDARD TERMINAL NOS.:  
2478 (18-24 AWG) WITH (2.79)/.110 MAX. INSULATION DIA.  
2578 (22-26 AWG) WITH (1.65)/.065 MAX. INSULATION DIA.  
OR TRIFURCATED TERMINAL NOS.:  
6438 (18-22 AWG) WITH (2.79)/.110 MAX. INSULATION DIA.  
6838 (18-24 AWG) WITH (2.79)/.110 MAX. INSULATION DIA.  
7258 (22-26 AWG) WITH (1.65)/.065 MAX. INSULATION DIA.
  - BOW (.006 MM/MIN) / .005 IN/AN
  - (0.13)/.005 MAX. FLASH ALLOWED ALONG DIMENSION B AND IN LOCKING WINDOW.
  - THIS PART CONFORMS TO CLASS B REQUIREMENTS OF COSMETIC SPECIFICATION PS-5499-002.
  - CIRCUIT SIZES 13 THROUGH 15 ARE NOT AVAILABLE IN G MATERIAL.

|  |  |  |  |       |              |                        |   |
|--|--|--|--|-------|--------------|------------------------|---|
| ADD/DELETE PINS<br>EUCO (2010/01/08)<br>H. CHYKANDERSON (2011/01/10)<br>APPROV. (2011/01/21) | QUALITY SYMBOLS                                      | GENERAL TOLERANCES (UNLESS SPECIFIED)  | DIMENSION STYLE  | SCALE | DESIGN UNITS | THIRD ANGLE PROJECTION |   |
|  | ∇=0<br>∇=0<br>∇=0                                    | 4 PLACES ±.--- INCH<br>3 PLACES ±.--- ±.010<br>2 PLACES ±.025 ±.014<br>1 PLACE ±.0.36 ±.---<br>ANGULAR ±1/2° | DRAWN BY: SKOWRONSKI<br>CHECKED BY: PATEL<br>APPROVED BY: LENZ<br>DATE: 04/05/86 | MM/IN | 4:1          | INCH                   | (3.96)/.156 CENTERLINE<br>CONNECTOR HOUSING<br>FOR KK CRIMP TERMINALS |
|  | DRAFT WHERE APPLICABLE MUST REMAIN WITHIN DIMENSIONS | SEE CHART  | MATERIAL NO.<br>DOCUMENT NO.   |       |              |                        | MOLEX INCORPORATED<br>SD-41695  |
|  |  |  |  |       |              |                        | SHEET NO.<br>1 OF 3   |

THIS DRAWING CONTAINS INFORMATION THAT IS PROPRIETARY TO MOLEX INCORPORATED AND SHOULD NOT BE USED WITHOUT WRITTEN PERMISSION

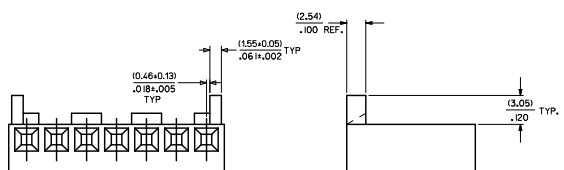
3 H  
2 H  
1 H  
BHT/REV

| 41695-N-AN** |              |       |            | 41695-N-BN**   |       |  |  |
|--------------|--------------|-------|------------|----------------|-------|--|--|
| PART NO.     | ENG. NO.     | VOIDS | PART NO.   | ENG. NO.       | VOIDS |  |  |
| 09-50-8020   | 41695-N-A2   |       | 09-50-8021 | 41695-N-B2     |       |  |  |
| 09-50-8030   | 41695-N-A3   |       | 09-50-8031 | 41695-N-B3     |       |  |  |
| 09-50-8040   | 41695-N-A4   |       | 09-50-8041 | 41695-N-B4     |       |  |  |
| 09-50-8050   | 41695-N-A5   |       | 09-50-8051 | 41695-N-B5     |       |  |  |
| 09-50-8060   | 41695-N-A6   |       | 09-50-8061 | 41695-N-B6     |       |  |  |
| 09-50-8070   | 41695-N-A7   |       | 09-50-8071 | 41695-N-B7     |       |  |  |
| 09-50-8080   | 41695-N-A8   |       | 09-50-8081 | 41695-N-B8     |       |  |  |
| 09-50-8090   | 41695-N-A9   |       | 09-50-8091 | 41695-N-B9     |       |  |  |
| 09-50-8100   | 41695-N-A10  |       | 09-50-8101 | 41695-N-B10    |       |  |  |
| 09-50-8110   | 41695-N-A11  |       | 09-50-8111 | 41695-N-B11    |       |  |  |
| 09-50-8120   | 41695-N-A12  |       | 09-50-8121 | 41695-N-B12    |       |  |  |
| 09-50-9085   | 41695-N-A8-2 | 2     | 09-50-8131 | 41695-N-B13    |       |  |  |
| 41695-0001   | 41695-N-A6-3 | 3     | 09-50-8141 | 41695-N-B14    |       |  |  |
| 41695-0002   | 41695-N-A5-4 | 4     | 09-50-8151 | 41695-N-B15    |       |  |  |
|              |              |       | 09-50-9030 | 41695-N-B3-2   | 2     |  |  |
|              |              |       |            | 41695-N-B5-2   | 2     |  |  |
|              |              |       |            | 41695-N-B9-2   | 2     |  |  |
|              |              |       |            | 41695-N-B11-2  | 2     |  |  |
|              |              |       | 09-50-9121 | 41695-N-B12-2  | 2     |  |  |
|              |              |       |            | 41695-N-B14-2  | 2     |  |  |
|              |              |       | 09-50-9150 | 41695-N-B15-14 | 14    |  |  |
|              |              |       | 09-50-9060 | 41695-N-B6-5   | 5     |  |  |
|              |              |       | 09-50-9070 | 41695-N-B7-6   | 6     |  |  |
|              |              |       | 09-50-9071 | 41695-N-B7-2   | 2     |  |  |
|              |              |       | 09-50-9040 | 41695-N-B4-3   | 3     |  |  |
|              |              |       | 09-50-9090 | 41695-N-B9-7   | 7     |  |  |
|              |              |       |            | 41695-N-B14-13 | 13    |  |  |
|              |              |       | 09-50-9136 | 41695-N-B13-5  | 5     |  |  |
|              |              |       | 09-50-9137 | 41695-N-B13-8  | 8     |  |  |
|              |              |       | 09-50-9050 | 41695-N-B5-1   | 2,4   |  |  |
|              |              |       | 09-50-9061 | 41695-N-B6-3   | 3     |  |  |
|              |              |       | 09-50-9080 | 41695-N-B8-2   | 2     |  |  |

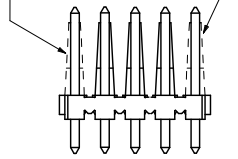
| 41695-G-AN** |             |       |            | 41695-G-BN** |       |  |  |
|--------------|-------------|-------|------------|--------------|-------|--|--|
| PART NO.     | ENG. NO.    | VOIDS | PART NO.   | ENG. NO.     | VOIDS |  |  |
| 41695-2032   | 41695-G-A02 |       | 41695-2000 | 41695-G-B02  |       |  |  |
| 41695-2033   | 41695-G-A03 |       | 41695-2005 | 41695-G-B03  |       |  |  |
| 41695-2034   | 41695-G-A04 |       | 41695-2002 | 41695-G-B04  |       |  |  |
| 41695-2035   | 41695-G-A05 |       | 41695-2006 | 41695-G-B05  |       |  |  |
| 41695-2036   | 41695-G-A06 |       | 41695-2007 | 41695-G-B06  |       |  |  |
| 41695-2037   | 41695-G-A07 |       | 41695-2008 | 41695-G-B07  |       |  |  |
| 41695-2038   | 41695-G-A08 |       | 41695-2009 | 41695-G-B08  |       |  |  |
| 41695-2039   | 41695-G-A09 |       | 41695-2010 | 41695-G-B09  |       |  |  |
| 41695-2040   | 41695-G-A10 |       | 41695-2011 | 41695-G-B10  |       |  |  |
| 41695-2041   | 41695-G-A11 |       | 41695-2012 | 41695-G-B11  |       |  |  |
| 41695-2042   | 41695-G-A12 |       | 41695-2013 | 41695-G-B12  |       |  |  |

**OPTION CODE D**

RAMP WITH POLARIZING PEGS (RIBS)



WHEN MATING VERSIONS D AND G WITH THE BREAKAWAY FRICTION LOCK HEADER SERIES OR THE POLARIZING HEADER SERIES THE END FRICTION LOCK OR POLARIZING WALL MUST BE REMOVED



WHEN MATING WITH BREAKAWAY HEADERS THE FRICTION LOCK WALL MUST BE REMOVED

|  |   |   |  |  |   |                           |                          |                     |  |
|--|---|---|--|--|---|---------------------------|--------------------------|---------------------|--|
| SEE SHEET 1<br>H. CHROMSKI<br>2011/07/08<br>CHROMSKI<br>2011/07/08<br>APPROVAL<br>2011/07/13 | QUALITY SYMBOLS<br>▽=0<br>▽=0<br>▽=0  | GENERAL TOLERANCES (UNLESS SPECIFIED)<br>4 PLACES ± .---<br>3 PLACES ± .---<br>2 PLACES ± .---<br>1 PLACE ± .---<br>ANGULAR ±1/2° | DIMENSION STYLE<br>MM/IN<br>SCALE 4:1<br>DESIGN UNITS INCH<br>THIRD ANGLE PROJECTION | DRAWN BY SAMIEC<br>CHECKED BY PATIL<br>DATE 09/22/86<br>DATE 09/22/86<br>DATE 09/22/86 | TITLE<br>(3,96)156 CENTERLINE CONNECTOR HOUSING FOR KK CRIMP TERMINAL<br>MOLEX INCORPORATED | MATERIAL NO.<br>SEE CHART | DOCUMENT NO.<br>SD-41695 | SHEET NO.<br>2 OF 3 |  |
|  | DRAFT WHERE APPLICABLE MUST REMAIN WITHIN DIMENSIONS  |   |  |  |   |                           |                          |                     |  |
|  | THIS DRAWING CONTAINS INFORMATION THAT IS PROPRIETARY TO MOLEX INCORPORATED AND SHOULD NOT BE USED WITHOUT WRITTEN PERMISSION |   |  |  |   |                           |                          |                     |  |
|  | SEE CHART   |   |  |  |   |                           |                          |                     |  |