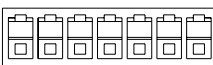
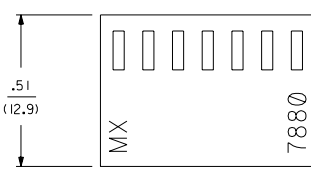
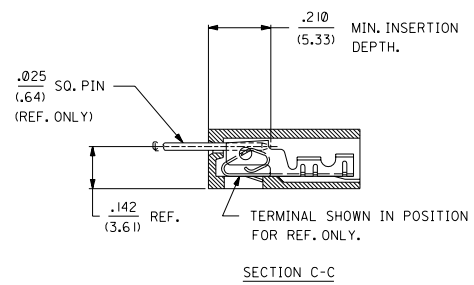
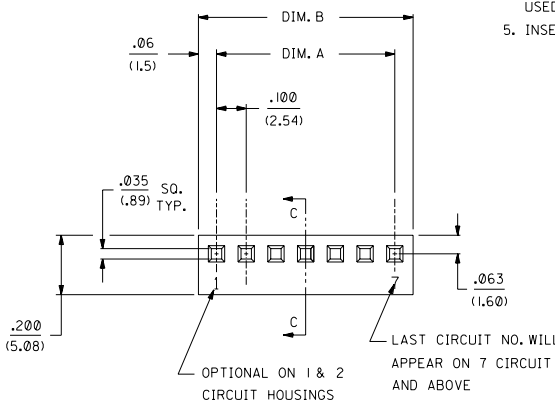


NO. OF CKT'S.	DIM. A	DIM. B
1		.122±.010 (3.10±.25)
2	.100±.004 (2.54±.10)	.222±.010 (5.64±.25)
3	.200±.004 (5.08±.10)	.322±.010 (8.18±.25)
4	.300±.004 (7.62±.10)	.422±.010 (10.72±.25)
5	.400±.004 (10.16±.10)	.522±.010 (13.26±.25)
6	.500±.005 (12.70±.13)	.622±.010 (15.80±.25)
7	.600±.005 (15.24±.13)	.722±.011 (18.34±.28)
8	.700±.005 (17.78±.13)	.822±.011 (20.88±.28)
9	.800±.006 (20.32±.15)	.922±.011 (23.42±.28)
10	.900±.006 (22.86±.15)	1.022±.012 (25.96±.30)
11	1.000±.006 (25.40±.15)	1.122±.012 (28.50±.30)
12	1.100±.006 (27.94±.15)	1.222±.012 (31.04±.30)
13	1.200±.007 (30.48±.18)	1.322±.012 (33.58±.30)
14	1.300±.007 (33.02±.18)	1.422±.013 (36.12±.33)
15	1.400±.011 (35.56±.28)	1.522±.013 (38.66±.33)
16	1.500±.011 (38.10±.28)	1.622±.013 (41.20±.33)
17	1.600±.011 (40.64±.28)	1.722±.013 (43.74±.33)
18	1.700±.011 (43.18±.28)	1.822±.014 (46.28±.36)
19	1.800±.011 (45.72±.28)	1.922±.014 (48.82±.36)
20	1.900±.011 (48.26±.28)	2.022±.014 (51.36±.36)
21	2.000±.012 (50.80±.30)	2.122±.015 (53.90±.38)
22	2.100±.012 (53.34±.30)	2.222±.015 (56.44±.38)
23	2.200±.012 (55.88±.30)	2.322±.015 (58.98±.38)
24	2.300±.012 (58.42±.30)	2.422±.016 (61.52±.41)
25	2.400±.013 (60.96±.33)	2.522±.016 (64.06±.41)
26	2.500±.013 (63.50±.33)	2.622±.016 (66.60±.41)
27	2.600±.013 (66.04±.33)	2.722±.016 (69.14±.41)
28	2.700±.013 (68.58±.33)	2.822±.017 (71.68±.43)



- NOTES:
- DIMENSIONS GIVEN ACROSS CENTERLINES ARE SYMMETRICAL ABOUT THOSE CENTERLINES WITHIN HALF THE TOTAL TOLERANCES.
 - THIS HOUSING FOR USE WITH SHROUDED TERMINAL 7879.
 - THIS PRODUCT COMPLIES WITH MOLEX PRODUCT SPEC. NO. 7879.
 - SPECIAL SUPPORT MAY BE REQUIRED FOR PRINTED CIRCUIT BOARDS USED WITH 10 OR MORE CIRCUIT CONNECTORS.
 - INSERTION AND WITHDRAWAL FORCES RANGE FROM 1.3 TO 1.9 POUNDS PER CIRCUIT.

OPTION CODE		
OPT. CODE	RAMP	MATERIAL
A	NONE	NYLON, 94V-0, COLOR-WHITE
B	STD. RAMP	NYLON, 94V-0, COLOR-WHITE
C	POL. RAMP	NYLON, 94V-0, COLOR-WHITE

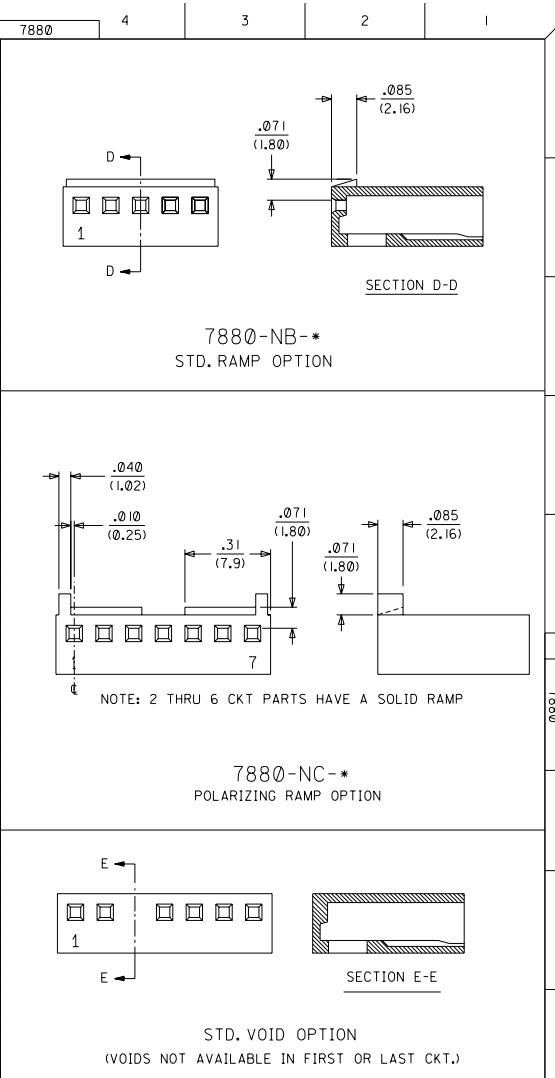
7880 - N * - *
NO. OF CKTS.

VOID CODE
NO. CORRESPONDS TO
CKT. NO. VOIDED.
MULT. VOIDS START WITH 51.

LTR. REVISIONS		LTR. REVISIONS		DIMENSIONS SHOWN METRIC/INCH UNLESS OTHERWISE SPECIFIED TOLERANCES ANGULAR ± 1/32° INCH METRIC 3 PLACE ± .010 ± .25 2 PLACE ± .014 ± 0.25 1 PLACE ± .035 ± 0.35 DRAFT WHERE APPLICABLE MUST REMAIN WITHIN DIMENSIONS		REVISION ONLY ON CAD SYSTEM TITLE (2.54)/.100 KK, HOUSING FOR SHROUDED CRIMP TYPE TERMINAL MOLEX INCORPORATED SHEET NO. 1 OF 2 DATE 08/24/88 PART NO. SD-7880 DRWG. NO. 69532	
ADD REGRIND UCP2003-1447 12/26/2002 SAMIEC		DRWG. BY GUZIK CHKD. BY PATEL APP'D. LENZ SCALE :		FILE NAME SEE CHART		NO. DRAWING CONTAINS INFORMATION THAT IS PROPRIETARY TO MOLEX INC. AND SHOULD NOT BE USED WITHOUT WRITTEN PERMISSION.	

2	L
1	LI
MFG. SH. REV.	

7880-NA-*			7880-NB-*			7880-NC-*		
PART NO.	ENG. NO.	VOID CKT.	PART NO.	ENG. NO.	VOID CKT.	PART NO.	ENG. NO.	VOID CKT.
10-01-2019	7880-1A		10-11-2013	7880-1B		N/A	7880-1C	
10-01-2029	7880-2A		10-11-2023	7880-2B			7880-2C	
10-01-2039	7880-3A		10-11-2033	7880-3B			7880-3C	
10-01-2049	7880-4A		10-11-2043	7880-4B			7880-4C	
10-01-2059	7880-5A		10-11-2053	7880-5B			7880-5C	
10-01-2069	7880-6A		10-11-2063	7880-6B			7880-6C	
10-01-2079	7880-7A		10-11-2073	7880-7B			7880-7C	
10-01-2089	7880-8A		10-11-2083	7880-8B			7880-8C	
10-01-2099	7880-9A		10-11-2093	7880-9B			7880-9C	
10-01-2109	7880-10A		10-11-2103	7880-10B			7880-10C	
10-01-2119	7880-11A		10-11-2113	7880-11B			7880-11C	
10-01-2129	7880-12A		10-11-2123	7880-12B			7880-12C	
10-01-2139	7880-13A		10-11-2133	7880-13B			7880-13C	
10-01-2149	7880-14A		10-11-2143	7880-14B			7880-14C	
10-01-2159	7880-15A		10-11-2153	7880-15B			7880-15C	
10-01-2169	7880-16A		10-11-2163	7880-16B			7880-16C	
10-01-2179	7880-17A		10-11-2173	7880-17B			7880-17C	
10-01-2189	7880-18A		10-11-2183	7880-18B			7880-18C	
10-01-2199	7880-19A		10-11-2193	7880-19B			7880-19C	
10-01-2209	7880-20A		10-11-2203	7880-20B			7880-20C	
10-01-2219	7880-21A		10-11-2213	7880-21B			7880-21C	
10-01-2229	7880-22A		10-11-2223	7880-22B			7880-22C	
10-01-2239	7880-23A		10-11-2233	7880-23B			7880-23C	
10-01-2249	7880-24A		10-11-2243	7880-24B			7880-24C	
10-01-2259	7880-25A		10-11-2253	7880-25B			7880-25C	
10-01-2269	7880-26A		10-11-2263	7880-26B			7880-26C	
10-01-2279	7880-27A		10-11-2273	7880-27B			7880-27C	
10-01-2289	7880-28A		10-11-2283	7880-28B			7880-28C	
			10-11-2052	7880-5B-2	2			
			10-11-2092	7880-9B-2	2			
			10-11-2105	7880-10B-4	4			



SEE SHEET I	SEE SHEET I	DIMENSIONS SHOWN (METRIC) INCH	▽ = 0	▼ = 0	REVISE ONLY ON CAD SYSTEM
SEE SHEET I	SEE SHEET I	UNLESS OTHERWISE SPECIFIED	TITLE		
SEE SHEET I	SEE SHEET I	TOLERANCES ANGULAR ± 0.2°	(2.54) x 100 KK HOUSING		
SEE SHEET I	SEE SHEET I	3 PLACE ± .010	FOR SHROUDED CRIMP		
SEE SHEET I	SEE SHEET I	2 PLACE ± .014 ± 0.25	TYPE TERMINAL		
SEE SHEET I	SEE SHEET I	1 PLACE ± 0.36	MOLEX INCORPORATED SHEET NO. DATE		
SEE SHEET I	SEE SHEET I	DRAFT WHERE APPLICABLE MUST REMAIN WITHIN DIMENSIONS	LITEL/LITL 69532 U.S.A. 08/24/88		
SEE SHEET I	SEE SHEET I	DRG. NO. SD-7880	SEE CHART		
SEE SHEET I	SEE SHEET I	DRG. BY: GLJZIK	NO DRAWING CONTAINS INFORMATION THAT IS PROPRIETARY TO MOLEX INC. AND SHOULD NOT BE USED WITHOUT WRITTEN PERMISSION.		
SEE SHEET I	SEE SHEET I	CHK'D. BY: PATEL	DIV. C		
APP'D. BY: LENZ	SCALE: 1				