

4

3

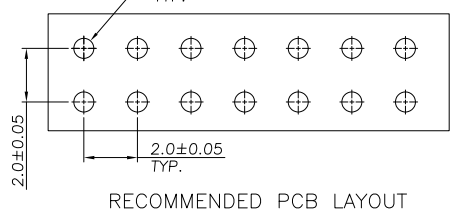
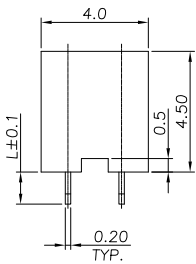
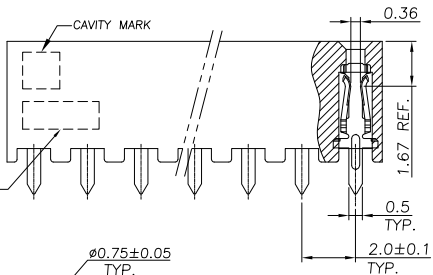
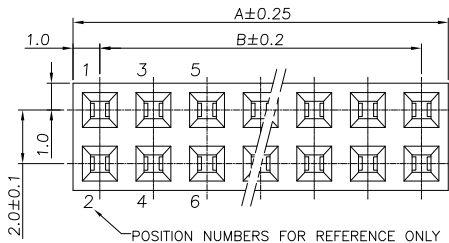
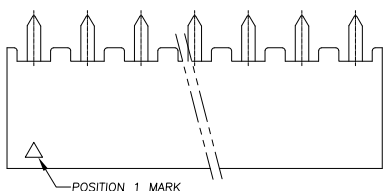
2

1

THIS DRAWING IS UNPUBLISHED. RELEASED FOR PUBLICATION MAR, 2006.  
 COPYRIGHT 2009 BY TYCO ELECTRONICS CORPORATION. ALL INTERNATIONAL RIGHTS RESERVED.

LOC	DIST	REVISIONS			
P	LTR	DESCRIPTION	DATE	DWN	APVD
IR	-	RELEASED AS PER ECR-09-017658	06AUG09	SRE	PCH

- NOTE:
- MATERIAL :  
HOUSING : THERMOPLASTIC, UL94V-0, BLACK COLOR.  
CONTACT : PHOSPHOR BRASS, THICKNESS=0.20mm.
  - FINISH:  
CONTACT : GOLD PLATED (SEE TABLE) ON CONTACT AREA  
80µ" MIN. MATTE TIN PLATED ON SOLDER TAILS,  
50µ" MIN. NICKEL UNDERPLATED ALL OVER
  - APPLICATION :  
SOLDER TAIL LENGTH 2.6 FOR PCB THICKNESS 1.0 MAX.  
1.2 FOR PCB THICKNESS 0.3 MAX.
  - WAVE SOLDER CAPABLE TO 265°C PER TE SPEC 109-202, CONDITION B
  - QUALIFICATION TEST REPORT: 501-57197



OBsolete	6	40	36	40	4	9	8	OBsolete	8u"	6	40	36	40	4	9	8
OBsolete		50	48	50	9	-	-8				50	48	50	4	-	-8
OBsolete		48	46	48	9	-	-7				48	46	48	4	-	-7
OBsolete		46	44	46	9	-	-6				46	44	46	4	-	-6
OBsolete		44	42	44	9	-	-5				44	42	44	4	-	-5
OBsolete		42	40	42	9	-	-4				42	40	42	4	-	-4
OBsolete		40	38	40	9	-	-3				40	38	40	4	-	-3
OBsolete		38	36	38	9	-	-2				38	36	38	4	-	-2
OBsolete		36	34	36	9	-	-1				36	34	36	4	-	-1
OBsolete		34	32	34	9	-	0				34	32	34	4	-	0
OBsolete		32	30	32	9	-	9				32	30	32	3	-	9
OBsolete		30	28	30	8	-	8				30	28	30	3	-	8
OBsolete		28	26	28	8	-	7				28	26	28	3	-	7
OBsolete		26	24	26	8	-	6				26	24	26	3	-	6
OBsolete		24	22	24	8	-	5				24	22	24	3	-	5
OBsolete		22	20	22	8	-	4				22	20	22	3	-	4
OBsolete		20	18	20	8	-	3				20	18	20	3	-	3
OBsolete		18	16	18	8	-	2				18	16	18	3	-	2
OBsolete		16	14	16	8	-	1				16	14	16	3	-	1
OBsolete		14	12	14	8	-	0				14	12	14	3	-	0
OBsolete		12	10	12	7	-	9				12	10	12	2	-	9
OBsolete		10	8	10	7	-	8				10	8	10	2	-	8
OBsolete		8	6	8	7	-	7				8	6	8	2	-	7
OBsolete		6	4	6	7	-	6				6	4	6	2	-	6
OBsolete		4	2	4	7	-	5				4	2	4	2	-	5
OBsolete		50	48	50	7	-	4				50	48	50	2	-	4
OBsolete		48	46	48	7	-	3				48	46	48	2	-	3
OBsolete		46	44	46	7	-	2				46	44	46	2	-	2
OBsolete		44	42	44	7	-	1				44	42	44	2	-	1
OBsolete		42	40	42	7	-	0				42	40	42	2	-	0
OBsolete		40	38	40	6	-	9				40	38	40	1	-	9
OBsolete		38	36	38	6	-	8				38	36	38	1	-	8
OBsolete		36	34	36	6	-	7				36	34	36	1	-	7
OBsolete		34	32	34	6	-	6				34	32	34	1	-	6
OBsolete		32	30	32	6	-	5				32	30	32	1	-	5
OBsolete		30	28	30	6	-	4				30	28	30	1	-	4
OBsolete		28	26	28	6	-	3				28	26	28	1	-	3
OBsolete		26	24	26	6	-	2				26	24	26	1	-	2
OBsolete		24	22	24	6	-	1				24	22	24	1	-	1
OBsolete		22	20	22	6	-	0				22	20	22	1	-	0
OBsolete		20	18	20	5	-	9				20	18	20	0	-	9
OBsolete		18	16	18	5	-	8				18	16	18	0	-	8
OBsolete		16	14	16	5	-	7				16	14	16	0	-	7
OBsolete		14	12	14	5	-	6				14	12	14	0	-	6
OBsolete		12	10	12	5	-	5				12	10	12	0	-	5
OBsolete		10	8	10	5	-	4				10	8	10	0	-	4
OBsolete		8	6	8	5	-	3				8	6	8	0	-	3
OBsolete		6	4	6	5	-	2				6	4	6	0	-	2
OBsolete		4	2	4	5	-	1				4	2	4	0	-	1

THIS DRAWING IS A CONTROLLED DOCUMENT.

DATE: 23-MAR-2006

CHK: S.HDU  
APVD: W.J.KF

PRODUCT SPEC: 108-57197

APPLICATION SPEC: -

WEIGHT: -

MATERIAL: 1

FINISH: 2

Customer Drawing

Scale: 1:1

Sheet: 1 of 2

Rev: B

TYCO Electronics  
Bangalore, India.

AMPMODU 2.0mm PITCH, REC  
CONN, VERTICAL, MOUNT TYPE

SIZE: A3  
CAGE CODE: -  
DRAWING NO: C-1734506

RESTRICTED TO: -

