

4

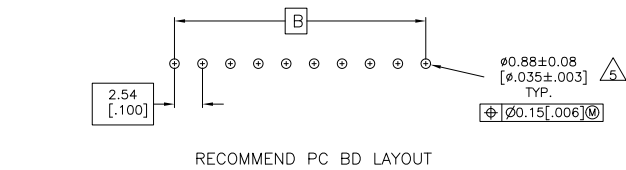
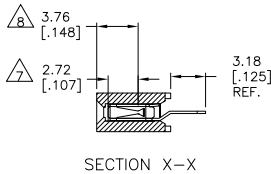
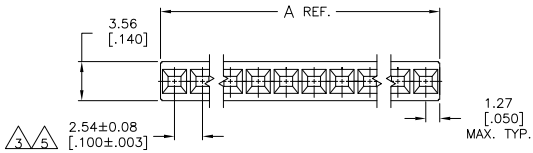
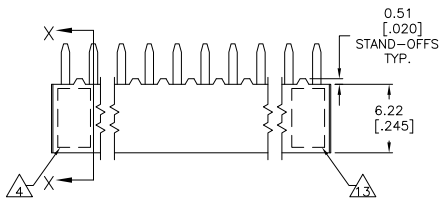
3

2

1

THIS DRAWING IS UNPUBLISHED. RELEASED FOR PUBLICATION
 © COPYRIGHT BY TYCO ELECTRONICS CORPORATION. ALL RIGHTS RESERVED.

| LOC | DIST | REVISIONS | | |
|-----|------|---------------------------|---------|--------|
| F | LNK | DESCRIPTION | DATE | BY |
| | R3 | REVISED PER ECO-10-024060 | 25NOV10 | HMR JO |



- △1 HOUSING: FLAME RETARDANT, GLASS FILLED, THERMOPLASTIC, COLOR: BLACK. CONTACT: PHOSPHOR BRONZE
- △2 CONTACT: 2.54-5.08µm [.000100-.000200] BRIGHT TIN-LEAD OVER 1.27µm [.000050] NICKEL
- △3 THESE DIMENSIONS PERTAIN TO CAVITY CENTERLINES ONLY - NOT TO CONTACT LOCATIONS
- △4 PART NUMBER AND DATE CODE ARE MARKED IN APPROXIMATE LOCATION SHOWN.
- △5 TOLERANCE IS NON-CUMULATIVE.
- △6 2 POSITION DATE CODE IS MARKED OPPOSITE SIDE OF THE LOGO.
- △7 POINT-OF-MEASUREMENT DIMENSION FOR PLATING THICKNESS (INSIDE CONTACT BEAM).
- △8 POINT-OF-CONTACT DIMENSION.
- △9 CONTACT: 3.81-7.62µm [.000150-.000300] MATTE TIN OVER 1.27µm [.000050] MIN. NICKEL
- △10 ROHS 2002/95/EC COMPLIANT
- △11 NO PART NUMBER MARKING REQUIRED FOR THIS PART.
- △12 TE LOGO AND CSA LOGO MOLDED INTO HOUSING, THIS LOCATION.
- △13
- △14 OBSOLETE PARTS: OBSOLETE CIS STREAMLINING PER D.RENAUD/D.SINISI

| | | | | |
|---|-------------|---------------------------------|-------------------|---|
| THIS DRAWING IS A CONTROLLED DOCUMENT. | | DRW M. BINNER CHK | 09NOV02 | Tyco Electronics Corporation Harrisburg, Pa 17105-3608 |
| DIMENSIONS: mm [INCHES] | | APP J. OLSON PRODUCT SPEC | 09NOV02 | |
| TOLERANCES UNLESS OTHERWISE SPECIFIED: | | NAME 108-25022 | | RECEPT. ASSY., MOD IV, SINGLE ROW, .100 CL., VERTICAL BOARD MOUNT, CLOSED, TOP ENTRY, SHORT PNT. OF CONTACT |
| 0 PLG ± - 1 PLG ± - 2 PLG ± 0.25(010) 3 PLG ± 0.13(005) 4 PLG ± - ANGLES ± - FINISH △ | | APPLICATION SPEC 114-25018 | | |
| MATERIAL △ | FINISH △ | SIZE A2 | ONE CODE 00779 | DATE C=535584 |
| CUSTOMER DRAWING | | SCALE 4:1 | SHEET 1 OF 2 | REV R3 |

AMP 1471-9 REV 31MMR2000

535584

A

THIS DRAWING IS UNPUBLISHED. RELEASED FOR PUBLICATION. ALL RIGHTS RESERVED.

| LOC | DIST | REVISIONS | | | | | |
|-----|------|-----------|----|-------------|------|----|------|
| AD | 00 | F | LR | DESCRIPTION | DATE | BY | APPD |
| | | - | - | SEE SHEET 1 | - | - | - |

| | | | | | |
|--------|---------|--------|------------|-------------|------------|
| 2.54 | [.100] | 5.08 | [.200] | 2 | 8-535584-9 |
| 96.52 | [3.800] | 99.06 | [3.900] | 39 | 8-535584-8 |
| 93.98 | [3.700] | 96.52 | [3.800] | 38 | 8-535584-7 |
| 91.44 | [3.600] | 93.98 | [3.700] | 37 | 8-535584-6 |
| 88.90 | [3.500] | 91.44 | [3.600] | 36 | 8-535584-5 |
| 86.36 | [3.400] | 88.90 | [3.500] | 35 | 8-535584-4 |
| 83.82 | [3.300] | 86.36 | [3.400] | 34 | 8-535584-3 |
| 81.28 | [3.200] | 83.82 | [3.300] | 33 | 8-535584-2 |
| 78.74 | [3.100] | 81.28 | [3.200] | 32 | 8-535584-1 |
| 76.20 | [3.000] | 78.74 | [3.100] | 31 | 8-535584-0 |
| 71.12 | [2.800] | 73.66 | [2.900] | 29 | 7-535584-9 |
| 68.58 | [2.700] | 71.12 | [2.800] | 28 | 7-535584-8 |
| 66.04 | [2.600] | 68.58 | [2.700] | 27 | 7-535584-7 |
| 63.50 | [2.500] | 66.04 | [2.600] | 26 | 7-535584-6 |
| 60.96 | [2.400] | 63.50 | [2.500] | 25 | 7-535584-5 |
| 58.42 | [2.300] | 60.96 | [2.400] | 24 | 7-535584-4 |
| 55.88 | [2.200] | 58.42 | [2.300] | 23 | 7-535584-3 |
| 53.34 | [2.100] | 55.88 | [2.200] | 22 | 7-535584-2 |
| 50.80 | [2.000] | 53.34 | [2.100] | 21 | 7-535584-1 |
| 99.06 | [3.900] | 101.60 | [4.000] | 40 | 7-535584-0 |
| 73.66 | [2.900] | 76.20 | [3.000] | 30 | 6-535584-9 |
| 48.26 | [1.900] | 50.80 | [2.000] | 20 | 6-535584-8 |
| 45.72 | [1.800] | 48.26 | [1.900] | 19 | 6-535584-7 |
| 40.64 | [1.600] | 43.18 | [1.700] | 17 | 6-535584-6 |
| 38.10 | [1.500] | 40.64 | [1.600] | 16 | 6-535584-5 |
| 35.56 | [1.400] | 38.10 | [1.500] | 15 | 6-535584-4 |
| 33.02 | [1.300] | 35.56 | [1.400] | 14 | 6-535584-3 |
| 30.48 | [1.200] | 33.02 | [1.300] | 13 | 6-535584-2 |
| 27.94 | [1.100] | 30.48 | [1.200] | 12 | 6-535584-1 |
| 25.40 | [1.000] | 27.94 | [1.100] | 11 | 6-535584-0 |
| 22.86 | [.900] | 25.40 | [1.000] | 10 | 5-535584-9 |
| 20.32 | [.800] | 22.86 | [.900] | 9 | 5-535584-8 |
| 17.78 | [.700] | 20.32 | [.800] | 8 | 5-535584-7 |
| 15.24 | [.600] | 17.78 | [.700] | 7 | 5-535584-6 |
| 10.16 | [.400] | 12.70 | [.500] | 5 | 5-535584-5 |
| 7.62 | [.300] | 10.16 | [.400] | 4 | 5-535584-4 |
| 5.08 | [.200] | 7.62 | [.300] | 3 | 5-535584-3 |
| 43.18 | [1.700] | 45.72 | [1.800] | 18 | 5-535584-2 |
| 12.70 | [.500] | 15.24 | [.600] | 6 | 5-535584-1 |
| FINISH | B | A | NO OF POSN | PART NUMBER | |

SUPERCEDED BY 6-535584-5
OBSOLETE

| | | | | | |
|--------|---------|--------|------------|-------------|------------|
| 38.10 | [1.500] | 40.64 | [1.600] | 16 | 4-535584-0 |
| 2.54 | [.100] | 5.08 | [.200] | 2 | 3-535584-9 |
| 96.52 | [3.800] | 99.06 | [3.900] | 39 | 3-535584-8 |
| 93.98 | [3.700] | 96.52 | [3.800] | 38 | 3-535584-7 |
| 91.44 | [3.600] | 93.98 | [3.700] | 37 | 3-535584-6 |
| 88.90 | [3.500] | 91.44 | [3.600] | 36 | 3-535584-5 |
| 86.36 | [3.400] | 88.90 | [3.500] | 35 | 3-535584-4 |
| 83.82 | [3.300] | 86.36 | [3.400] | 34 | 3-535584-3 |
| 81.28 | [3.200] | 83.82 | [3.300] | 33 | 3-535584-2 |
| 78.74 | [3.100] | 81.28 | [3.200] | 32 | 3-535584-1 |
| 76.20 | [3.000] | 78.74 | [3.100] | 31 | 3-535584-0 |
| 71.12 | [2.800] | 73.66 | [2.900] | 29 | 2-535584-9 |
| 68.58 | [2.700] | 71.12 | [2.800] | 28 | 2-535584-8 |
| 66.04 | [2.600] | 68.58 | [2.700] | 27 | 2-535584-7 |
| 63.50 | [2.500] | 66.04 | [2.600] | 26 | 2-535584-6 |
| 60.96 | [2.400] | 63.50 | [2.500] | 25 | 2-535584-5 |
| 58.42 | [2.300] | 60.96 | [2.400] | 24 | 2-535584-4 |
| 55.88 | [2.200] | 58.42 | [2.300] | 23 | 2-535584-3 |
| 53.34 | [2.100] | 55.88 | [2.200] | 22 | 2-535584-2 |
| 50.80 | [2.000] | 53.34 | [2.100] | 21 | 2-535584-1 |
| 99.06 | [3.900] | 101.60 | [4.000] | 40 | 2-535584-0 |
| 73.66 | [2.900] | 76.20 | [3.000] | 30 | 1-535584-9 |
| 48.26 | [1.900] | 50.80 | [2.000] | 20 | 1-535584-8 |
| 45.72 | [1.800] | 48.26 | [1.900] | 19 | 1-535584-7 |
| 40.64 | [1.600] | 43.18 | [1.700] | 17 | 1-535584-6 |
| 38.10 | [1.500] | 40.64 | [1.600] | 16 | 1-535584-5 |
| 35.56 | [1.400] | 38.10 | [1.500] | 15 | 1-535584-4 |
| 33.02 | [1.300] | 35.56 | [1.400] | 14 | 1-535584-3 |
| 30.48 | [1.200] | 33.02 | [1.300] | 13 | 1-535584-2 |
| 27.94 | [1.100] | 30.48 | [1.200] | 12 | 1-535584-1 |
| 25.40 | [1.000] | 27.94 | [1.100] | 11 | 1-535584-0 |
| 22.86 | [.900] | 25.40 | [1.000] | 10 | 535584-9 |
| 20.32 | [.800] | 22.86 | [.900] | 9 | 535584-8 |
| 17.78 | [.700] | 20.32 | [.800] | 8 | 535584-7 |
| 15.24 | [.600] | 17.78 | [.700] | 7 | 535584-6 |
| 10.16 | [.400] | 12.70 | [.500] | 5 | 535584-5 |
| 7.62 | [.300] | 10.16 | [.400] | 4 | 535584-4 |
| 5.08 | [.200] | 7.62 | [.300] | 3 | 535584-3 |
| 43.18 | [1.700] | 45.72 | [1.800] | 18 | 535584-2 |
| 12.70 | [.500] | 15.24 | [.600] | 6 | 535584-1 |
| FINISH | B | A | NO OF POSN | PART NUMBER | |

SUPERSEDED BY 5-535584-8

THIS DRAWING IS A CONTROLLED DOCUMENT.

| | | | | | | |
|-------------------------|--|--|--------------------------------------|---|--|------------------|
| DIMENSIONS: mm [INCHES] | TOLERANCES UNLESS OTHERWISE SPECIFIED: 0 PLG ± .010 1 PLG ± .015 2 PLG ± .025 (010) 3 PLG ± .015 (005) 4 PLG ± .010 | DRW: M. SINNER CHK: J. OLSON APPD: J. OLSON PRODUCT SPEC: 108-25022 APPLICATION SPEC: 114-25018 WEIGHT: - | QSDVD2 QSDVD2 QSDVD2 QSDVD2 | Ytyo Electronics Corporation Harrisburg, Pa 17105-3608 | RECPT. ASSY., MOD IV, SINGLE ROW, .100 CL., VERTICAL BOARD MOUNT, CLOSED, TOP ENTRY, SHORT PNT. OF CONTACT | RESTRICTED TO: - |
| MATERIAL: | FINISH: | CUSTOMER DRAWING | SCALE: 4:1 | SHEET: 2 of 2 | REV: R3 | |