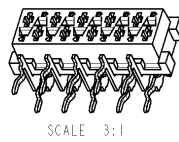
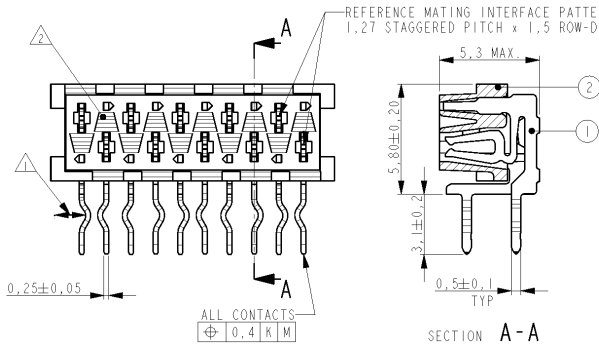


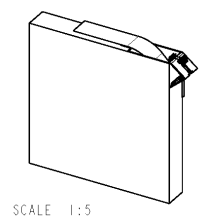
THIS DRAWING IS UNPUBLISHED. RELEASED FOR PUBLICATION
 COPYRIGHT 20 BY TYCO ELECTRONICS CORPORATION. ALL RIGHTS RESERVED.

LOC	DIST	REVISIONS			
P	LTR	DESCRIPTION	DATE	DWN	APVD
G1		ECR-09-010124	07-05-09	AEG	WRV
H		ECR-09-026776	08JAN2010	JvdH	TDB

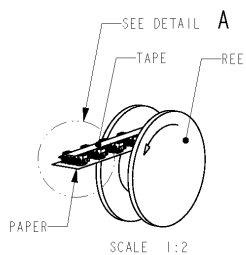
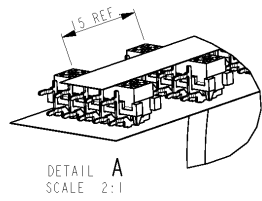
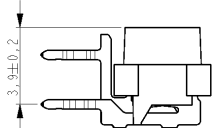
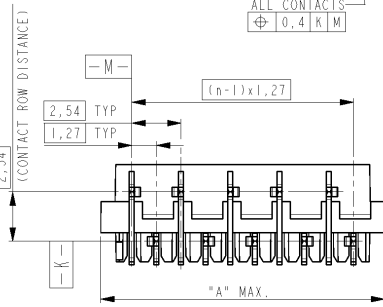
REFERENCE MATING INTERFACE PATTERN:
 1,27 STAGGERED PITCH x 1,5 ROW-DISTANCE.



PART NUMBER BOX PACKAGING	PART NUMBER REEL PACKAGING	NR OF POS. "n"	"A" MAX
7-100400-4	0-100400-4	4	7.1
7-100400-6	0-100400-6	6	9.7
7-100400-8	0-100400-8	8	12.2
8-100400-0	1-100400-0	10	14.7
8-100400-2	1-100400-2	12	17.3
8-100400-4	1-100400-4	14	19.8
8-100400-6	1-100400-6	16	22.4
8-100400-8	1-100400-8	18	24.9
9-100400-0	2-100400-0	20	27.4

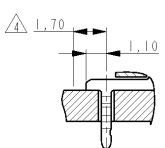
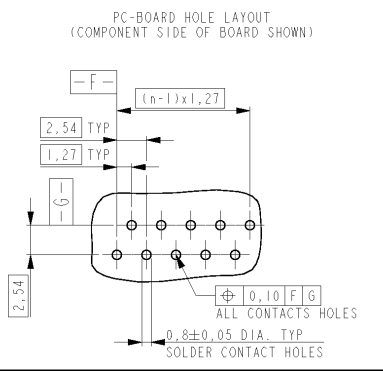


BOX PACKAGING:
 250 CONNECTORS PER BOX
 FOR ALL PARTNUMBERS



REEL PACKAGING
 DEREEING DIRECTION AND CONNECTOR POSITION.
 QUANTITY 2500 CONNECTORS PER REEL FOR ALL PARTNUMBERS.
 EXCEPT 4 POSITION 1500 CONNECTORS PER REEL

- NOTES:
- IN EACH ROW, DIRECTION OF KINKS STARTS RANDOM.
 - IN EACH ROW, SEQUENTIAL CONTACTS HAVE OPPOSITE KINK DIRECTIONS.
 - CORING-OUTS FOR MANUFACTURING PURPOSE ONLY.
 - SHAPE MAY VARY, BUT IS NOT FUNCTIONAL FOR THE APPLICATION.
 - 3 SHOWN IS A 10 POSITION CONNECTOR.
 - THIS AREA IS RESERVED FOR CONTACTS.



DIMENSIONS:		TOLERANCES UNLESS OTHERWISE SPECIFIED:	
mm			
0 PLC	±		
1 PLC	±		
2 PLC	±		
3 PLC	±		
4 PLC	±		
ANGLES	±		
MATERIAL		FINISH	

2 HOUSING	G.F. POLYESTER PBT	RED
1 FEMALE CONTACT	PHOSPHOR BRONZE	TIN OVER NICKEL
ITEM NO.	DESCRIPTION	MATERIAL
		FINISH / COLOR
DWN J. V. DREUMEL	29OCT1991	
CHK H. KOKKEN	29OCT1991	
APVD		
Tyco Electronics, Nederland B. V. 's-HERTOGENBOSCH, THE NETHERLANDS		
CONNECTOR, FEMALE-ON-BOARD SIDE-ENTRY, THRU-HOLE, W/O POLARIZATION, Micro-MatCh		
PRODUCT SPEC	108-19052	
APPLICATION SPEC		
SIZE	A3	
CAGE CODE	00779	
DRAWING NO	C-100400	
RESTRICTED TO		
CUSTOMER DRAWING	SCALE 10:1	SHEET 1 OF 1 REV H