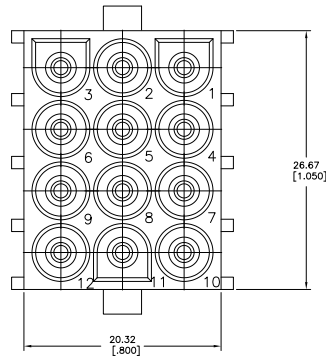
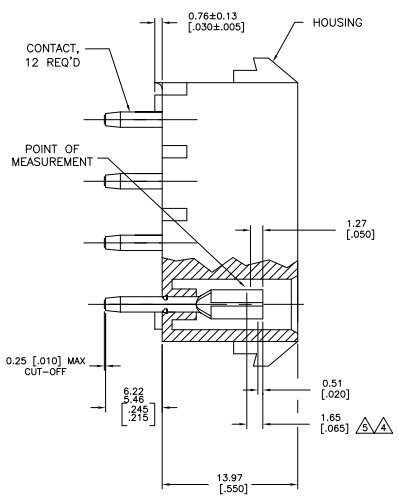
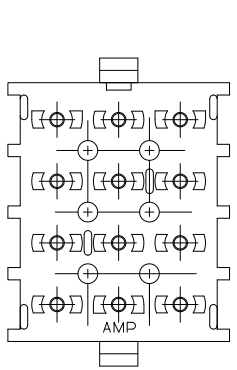
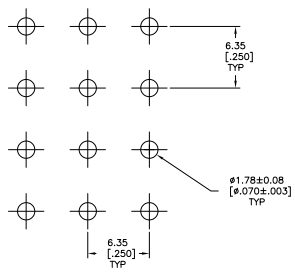


REV	DATE	DESCRIPTION	BY	CHKD
G1		REVISED PER ECO-08-019746	13M/028	HMR DC
G2		REV PER ECO-09-021826	08SEP09	KK AEG



- 1 MATES WITH AMP CONNECTOR PART NO. 480708.
- △ FLAME RETARDANT CLASSIFICATION OF MATERIAL IS 94V-2.
- 3 PARTS MUST COMPLY WITH AMP SOLDERABILITY SPEC 109-11-3.
- △ CONTACT IS STAMPED FROM PRE-PLATED STOCK WHICH IS PLATED OVERALL WITH 0.00127 [.000050] NICKEL, THEN STRIPED WITH 0.00076 [.000030] GOLD IN CONTACT AREA INDICATED AND TIN-LEAD ON SOLDER TAIL END.
- △ CONTACT IS PLATED OVERALL WITH 0.00127 [.000050] NICKEL, THEN 0.00076 [.000030] GOLD OVER CONTACT LENGTH INDICATED AND MATTE TIN ON SOLDER TAIL END.
- △ OBSOLETE PARTS: OBSOLETE CIS STREAMLINING PER D.RENAUD/D.SINISI



RECOMMENDED LAYOUT FOR 3.18 [.125] THICK PC BOARD

△ 6 SUPERSEDED BY 350991-5

PH BRZ GOLD △	NYLON,NATURAL △	350991-5
PH BRZ TIN	NYLON,NATURAL △	350991-4
PH BRZ GOLD △	NYLON,NATURAL △	350991-3

CONTACT		HOUSING		PART NO	
PH BRZ GOLD △	NYLON,NATURAL △	350991-5			
PH BRZ TIN	NYLON,NATURAL △	350991-4			
PH BRZ GOLD △	NYLON,NATURAL △	350991-3			

METRIC

THIS DRAWING IS A CONTROLLED DOCUMENT.

DATE: 11/02/09

BY: S. SIDGILL

CHKD: S. SIDGILL

APP'D: S. SIDGILL

REV: 1

REV: 2

REV: 3

REV: 4

REV: 5

REV: 6

REV: 7

REV: 8

REV: 9

REV: 10

REV: 11

REV: 12

REV: 13

REV: 14

REV: 15

REV: 16

REV: 17

REV: 18

REV: 19

REV: 20

REV: 21

REV: 22

REV: 23

REV: 24

REV: 25

REV: 26

REV: 27

REV: 28

REV: 29

REV: 30

REV: 31

REV: 32

REV: 33

REV: 34

REV: 35

REV: 36

REV: 37

REV: 38

REV: 39

REV: 40

REV: 41

REV: 42

REV: 43

REV: 44

REV: 45

REV: 46

REV: 47

REV: 48

REV: 49

REV: 50

REV: 51

REV: 52

REV: 53

REV: 54

REV: 55

REV: 56

REV: 57

REV: 58

REV: 59

REV: 60

REV: 61

REV: 62

REV: 63

REV: 64

REV: 65

REV: 66

REV: 67

REV: 68

REV: 69

REV: 70

REV: 71

REV: 72

REV: 73

REV: 74

REV: 75

REV: 76

REV: 77

REV: 78

REV: 79

REV: 80

REV: 81

REV: 82

REV: 83

REV: 84

REV: 85

REV: 86

REV: 87

REV: 88

REV: 89

REV: 90

REV: 91

REV: 92

REV: 93

REV: 94

REV: 95

REV: 96

REV: 97

REV: 98

REV: 99

REV: 100