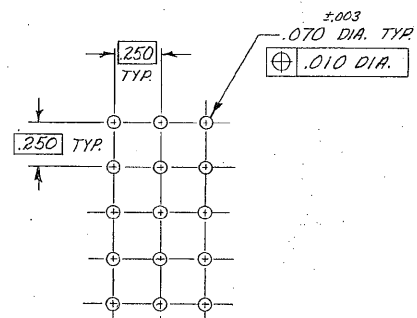
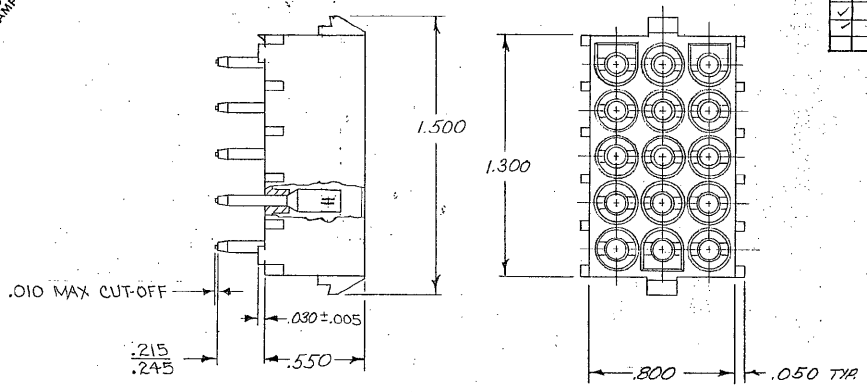


DRAWING MADE IN THIRD ANGLE PROJECTION

© COPYRIGHT 1976 BY AMP INCORPORATED, HARRISBURG, PA. ALL INTERNATIONAL RIGHTS RESERVED. AMP INCORPORATED PRODUCTS COVERED BY U. S. PATENTS AND FOREIGN PATENTS AND/OR PATENTS PENDING.

UNPUBLISHED COPY NOT TO BE REPRODUCED OR TRANSMITTED IN ANY FORM OR BY ANY MEANS WITHOUT WRITTEN PERMISSION OF AMP INCORPORATED.



RECOMMENDED HOLE PATTERN FOR 1/8" THK. P.C. BOARD

		REVISONS		DATE	APPROVED
P	F	ZONE	LTR	DESCRIPTION	
		O		DWG. RELEASE M-3939	10/27/76 MFL/D.H.
✓		A		REVISED PER M-4184	4-6-77 MFL/D.H.
✓		B		REV. TAIL LENGTH PER M-6394	9-28-81 MFL/D.H.
✓		C		ADDED NOTE 4 PER M-6688	11-18-81 MFL/D.H.
✓		D		ADDED DRAIN HOLES M-6777	8/4/82 MFL/D.H.
✓		E		REVISED PER ECN M-7383	3-8-83 MFL/D.H.
✓		E1		RESTORATION	4-23-85 MFL/D.H.
✓		F		REVISED PER CM-1520	5-5-88 PH
✓		G		OBS-3 PER ECN 0136-96	6-23-96 JH

- MATES WITH AMP CONNECTOR P/N 480710
- FLAME RETARDANT CLASSIFICATION OF MATERIAL IS 94V-2
- PARTS COMPLY TO AMP SOLDERABILITY SPECIFICATION #109-11-3

NYLON-NATURAL	PHOS. BRONZE-PRE-TIN PLATED	350992-4
HOUSING MAT'L & COLOR		SOCKET MAT'L & PLATING
UNLESS OTHERWISE SPECIFIED DIMENSIONS ARE IN INCHES. TOLERANCES ON: DECIMALS ± .015 ANGLES ±		CONTRACT NO
MATERIAL		DR D. HAENER 11/6/76
FINISH		CHK D. S. HEIDE 11/10/76
OTHER APPD		APPD J. K. F. 11/10/76
SCALE 2:1		NAME
SHEET		AMP INCORPORATED Harrisburg, Pa.
DRAWING NO		HEADER ASS'Y 15 CIRCUIT UNIV. MATE-N-LOK™ (LONG TAIL)
DRAWING NO		00779
DRAWING NO		350992

CUSTOMER DRAWING