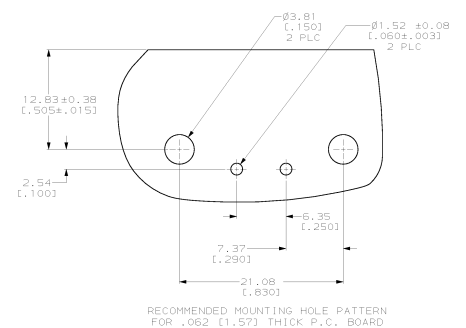
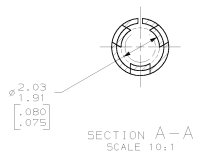
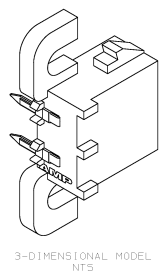
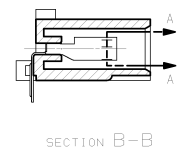
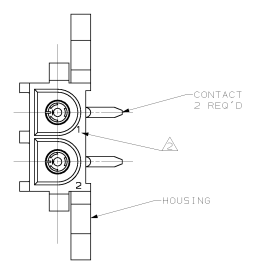
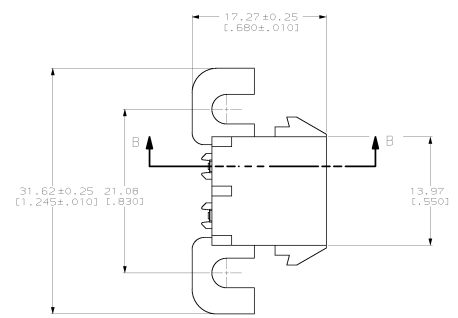
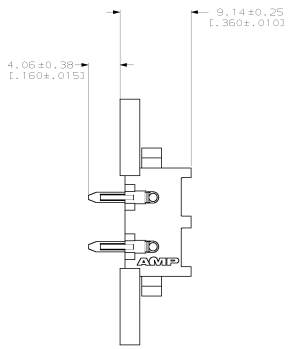


REV 8.00		REV 8.00		REV 8.00	
CM	53	REV	8	REV	8
REV 8.00 PER EC 0018-0126-98		REV 8.00 PER EC 0018-0126-98		REV 8.00 PER EC 0018-0126-98	

- PARTS COMPLY WITH AMP SOLDERABILITY SPECIFICATION 109-11-5.
- CIRCUIT IDENTIFICATION CHARACTERS ARE ADJACENT TO THE INDICATED CAVITIES, BUT LOCATION AND ORIENTATION MAY DIFFER FROM PRINT.
- DIMENSIONS IN BRACKETS ARE IN INCHES.



PH BRZ TIN	NYLON UL 94V-0	643226-1
CONTACT	HOUSING	PART NO
AMP Incorporated 10000 North Central Expressway Dallas, Texas 75243-1696 (972) 992-2100 FAX (972) 992-2101 WWW.AMP.COM © 1998 AMP Incorporated 643226-1		
METRIC SOCKET HEADER ASSEMBLY RIGHT ANGLE MOUNT, 2 POSITION UNIVERSAL MATE-N-LOK™		
THIS DRAWING IS A CONTROLLED DOCUMENT.	SEE TABLE	SEE TABLE
REV 8.00	REV 8.00	REV 8.00