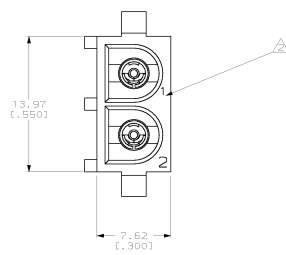
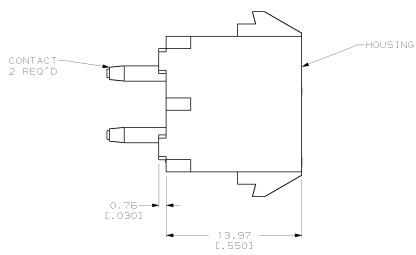
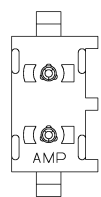
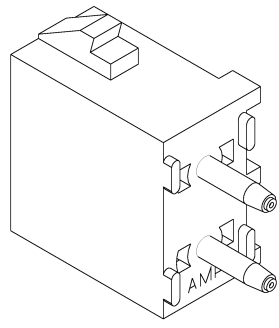


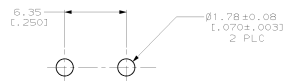
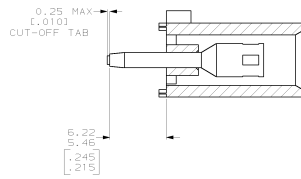
REV	DATE	DESCRIPTION	BY	CHKD	APP'D
CM	53	REV 6. REDWN PER: ED 0618-0252-99			



- PARTS COMPLY TO AMP SOLDERABILITY SPECIFICATION 109-11-3.
- CIRCUIT IDENTIFICATION CHARACTERS ARE ADJACENT TO THE INDICATED CAVITIES, BUT LOCATION AND ORIENTATION MAY DIFFER FROM PRINT.
- DIMENSIONS IN BRACKETS ARE IN INCHES.



3-DIMENSIONAL MODEL
NTS



RECOMMENDED MOUNTING HOLE PATTERN
FOR 3.18 (.125) THICK P.C. BOARD

PHOSPHOR BRONZE, PRE-TIN	NYLON, UL94V-2, NATURAL	350986-4
PIN CONTACT MATERIAL AND FINISH		HOUSING MATERIAL
		PART NO



THIS DRAWING IS A CONTROLLED DOCUMENT.		REV	DATE	AMP Incorporated Harrisburg, PA 17105-8608
APPROVED	BY ENGINEER	BY	DATE	
MATERIAL		FINISH	REVISION	SOCKET HEADER ASSEMBLY, 2 CIRCUIT UNIVERSAL MATE-N-LOK™
SEE TABLE	SEE TABLE	SEE TABLE	SEE TABLE	
		DATE	BY	A1100779 C-350986