



DOCUMENT NUMBER AND REVISION

**VL-FS-MDLS16265D-03 REV. A
(MDLS16265D-LV-G)**

**DOCUMENT TITLE:
SPECIFICATION
OF**

LCD MODULE TYPE

MODEL NUMBER: MDLS16265D-03

DEPARTMENT	NAME	SIGNATURE	DATE
PREPARED BY	SUNNY LEE	<i>Sunny</i>	2003.12.24
CHECKED BY	YU HAO	<i>Y. Hao</i>	2003.12.24
APPROVED BY	DERRICK TAM	<i>Derrick</i>	2003.12.24

DISTRIBUTION LIST: MARKETING



DOCUMENT REVISION HISTORY 1:

DOCUMENT REVISION FROM TO	DATE	DESCRIPTION	CHANGED BY	CHECKED BY
A	2003.12.24	First Release. (Based on Test Specification VL-TS-MDLS16265D-XX REV.M 2003-06-28).	SUNNY LEE	YU HAO



CONTENTS

	<u>Page No.</u>
1. GENERAL DESCRIPTION	4
2. MECHANICAL SPECIFICATIONS	4
3. INTERFACE SIGNALS	7
4. ABSOLUTE MAXIMUM RATINGS	8
4.1 ELECTRICAL MAXIMUM RATINGS (Ta=25°C)	8
4.2 ENVIRONMENTAL CONDITION	8
5. ELECTRICAL SPECIFICATIONS	9
5.1 TYPICAL ELECTRICAL CHARACTERISTICS	9
5.2 TIMING SPECIFICATIONS	10
5.3 TIMING DIAGRAM OF VDD AGAINST V0	12
6. CHARACTER GENERATOR ROM (KS0066U-10B)	13



VARITRONIX LIMITED

Specification of LCD Module Type Model No.: MDLS16265D-03

1. General Description

- 16 characters (5 x 8 dots) x 2 lines STN Positive Yellow Reflective LCD Character Module.
- Viewing Angle: 6 O'clock direction.
- Driving duty: 1/16 Duty, 1/5 bias.
- 'SAMSUNG' KS0066UP-10BCC(Die form) LCD Controller & Driver or equivalent.
- 'SAMSUNG' KS0065B-PCC(Die form) LCD Segment Driver or equivalent.

2. Mechanical Specifications

The mechanical detail is shown in Fig. 1(a) and summarized in Table 1 below.

Table 1

Parameter	Specifications	Unit
Outline dimensions	84.0(W) x 44.0(H) x 10.0 MAX.(D)	mm
Viewing area	61.0(W) x 16.0(H)	mm
Display format	16 characters x 2 lines	-
Character size	2.95(W) x 5.55(H) (5 x 8 dots)	mm
Character spacing	0.6(W) x 0.4(H)	mm
Character pitch	3.55(W) x 5.95(H)	mm
Dot size	0.55(W) x 0.65(H)	mm
Dot spacing	0.05(W) x 0.05(H)	mm
Dot pitch	0.60(W) x 0.70(H)	mm
Weight	TBD	grams

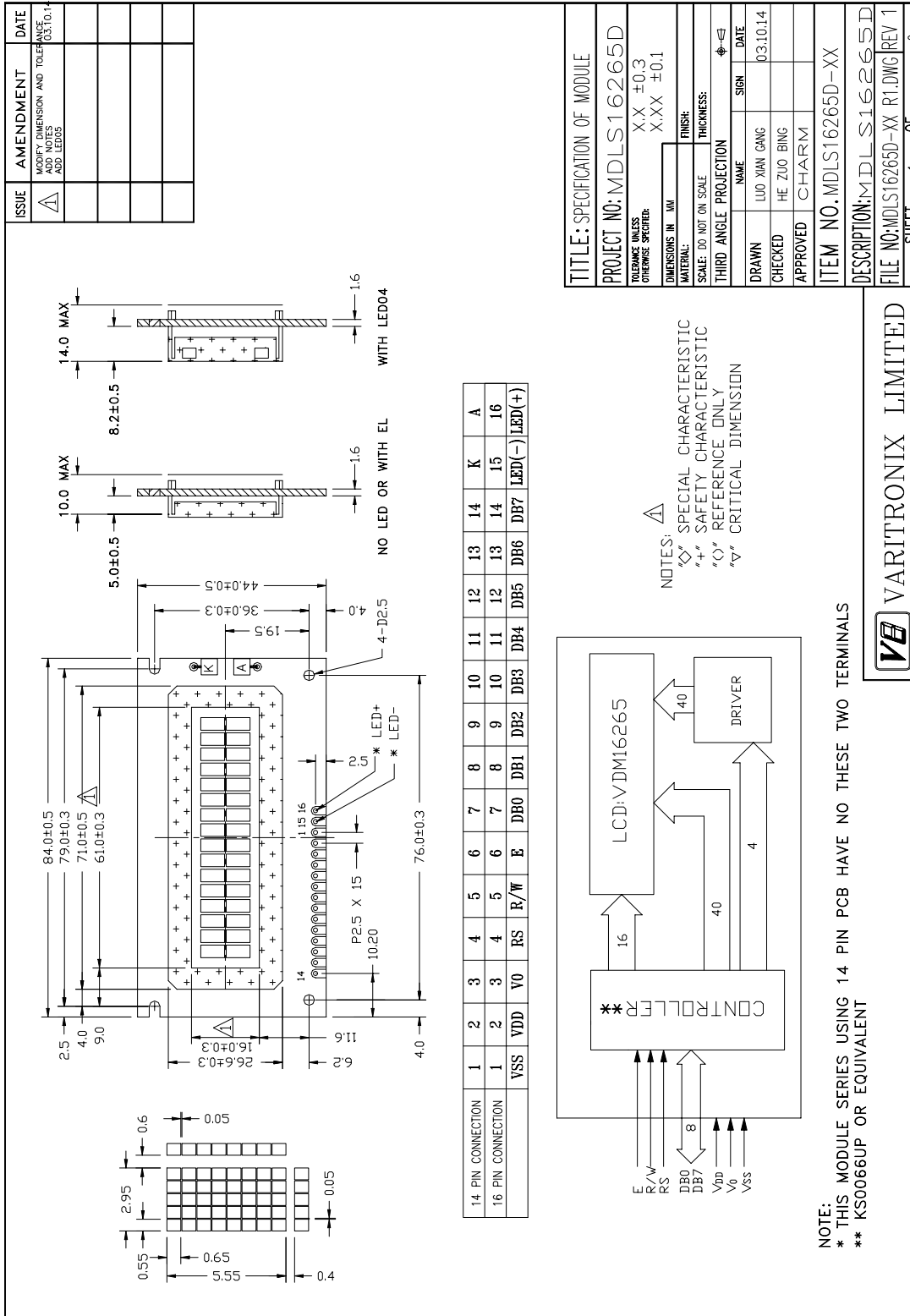
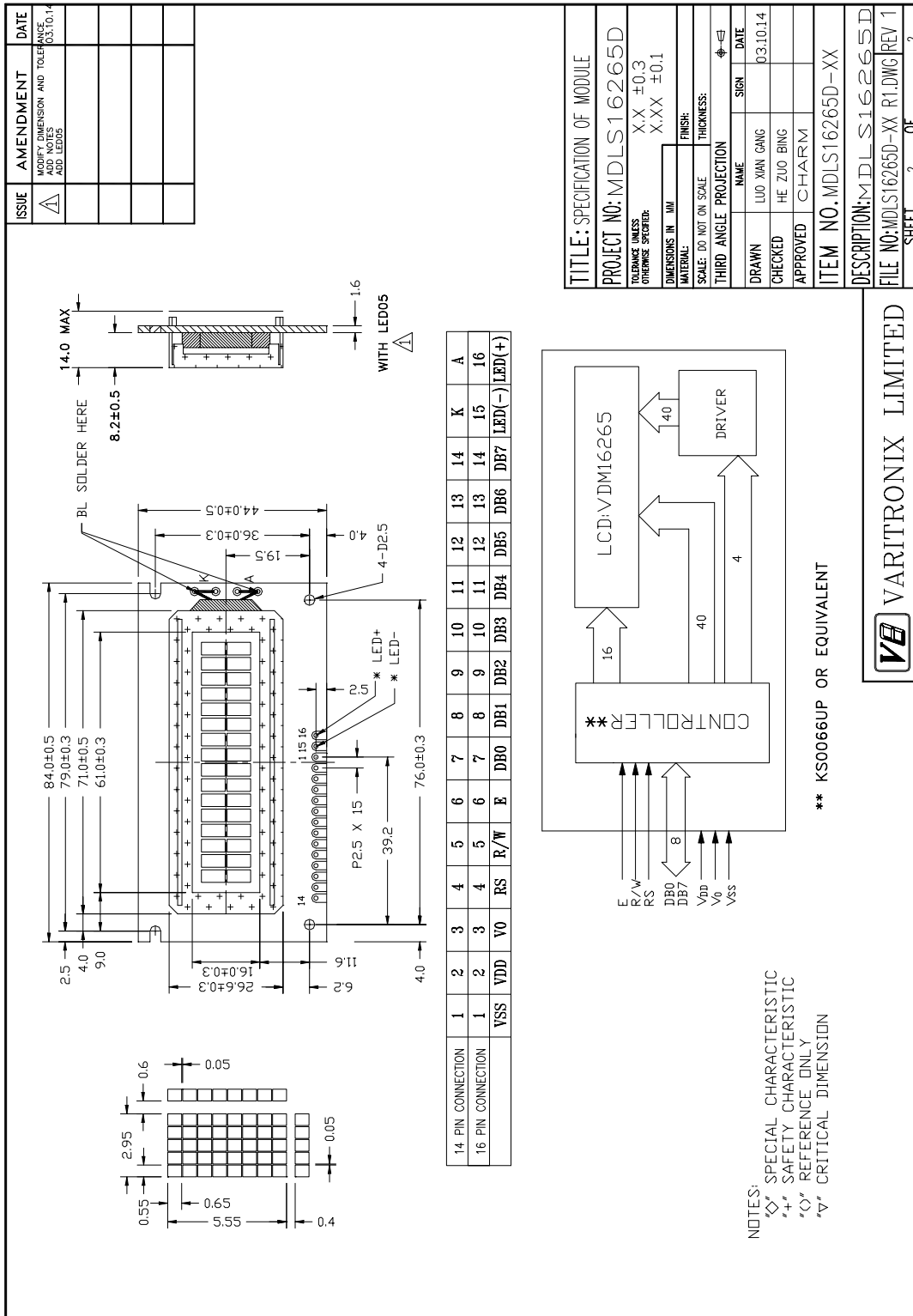


Figure 1(a): Module Specification



VARITRONIX LIMITED

Figure 1(b): Module Specification



3. Interface signals

Table 2

Pin No.	Symbol	Description
1	VSS	Ground (0V).
2	VDD	Power supply for logic (+5.0V).
3	V0	Power supply for LCD driver.
4	RS	Register Select Input: “High” for Data register (for read and write). “Low” for Instruction register (for write), Busy flag, address counter (for read).
5	R/W	Read/Write signal: ‘High’ for Read mode. ‘Low’ for Write mode.
6	E	Enable. Start signal for data read /write.
7	DB0	Data input/output (LSB)
8	DB1	Data input/output
9	DB2	Data input/output
10	DB3	Data input/output
11	DB4	Data input/output
12	DB5	Data input/output
13	DB6	Data input/output
14	DB7	Data input/output (MSB)
K	LED(-)	Cathode of LED Backlight
A	LED(+)	Anode of LED Backlight



4. Absolute Maximum Ratings

4.1 Electrical Maximum Ratings (Ta = 25 °C)

Table 3

Parameter	Symbol	Min.	Max.	Unit
Power Supply voltage (Logic)	VDD-VSS	-0.3	+7.0	V
Power Supply voltage (LCD drive)	VLCD =VDD-V0	-0.3	+15.0	V
Input voltage	Vin	-0.3	VDD+0.3	V

Note:

The modules may be destroyed if they are used beyond the absolute maximum ratings.

All voltage values are referenced to VSS = 0V.

4.2 Environmental Condition

Table 4

Item	Operating Temperature (Topr)		Storage Temperature (Tstg)		Remark
	Min.	Max.	Min.	Max.	
Ambient Temperature	0°C	+50°C	-10°C	+60°C	Dry
Humidity	95% max. RH for Ta ≤ 40°C < 95% RH for Ta > 40°C				no condensation
Vibration (IEC 68-2-6) cells must be mounted on a suitable connector	Frequency: 10 ~ 55 Hz Amplitude: 0.75 mm Duration: 20 cycles in each direction.				3 directions
Shock (IEC 68-2-27) Half-sine pulse shape	Pulse duration : 11 ms Peak acceleration: 981 m/s ² = 100g Number of shocks : 3 shocks in 3 mutually perpendicular axes.				3 directions



5. Electrical Specifications

5.1 Typical Electrical Characteristics

At $T_a = 25\text{ }^\circ\text{C}$, $V_{DD} = 5V \pm 5\%$, $V_{SS} = 0V$.

Table 5

Parameter	Symbol	Conditions	Min.	Typ.	Max.	Unit
Supply voltage (Logic)	$V_{DD} - V_{SS}$		4.75	5.0	5.25	V
Supply voltage (LCD)	$V_{LCD} = V_{DD} - V_0$	$V_{DD} = 5V$, Note (1)	4.3	4.6	4.9	V
Input signal voltage for E,DB0-DB7,R/W,RS.	V_{IH}	“H” level	2.2	-	V_{DD}	V
	V_{IL}	“L” level	-0.3	-	0.6	V
Supply Current (Logic & LCD)	IDD	Character mode, $V_{DD} = 5V$, Note 1	-	1.0	1.5	mA
		Checker board mode, $V_{DD} = 5V$, Note 1	-	1.3	2.0	mA
Supply Current (LCD)	I0	Character mode, $V_{DD} = 5V$, Note 1	-	0.2	0.3	mA
		Checker board mode, $V_{DD} = 5V$, Note 1	-	0.2	0.3	mA

Note (1): There is tolerance in optimum LCD driving voltage during production and it will be within the specified range.



5.2 Timing Specifications

At $T_a = 0\text{ }^{\circ}\text{C}$ To $+50\text{ }^{\circ}\text{C}$, $V_{DD} = +5\text{V} \pm 5\%$, $V_{SS} = 0\text{V}$.

Refer to Fig. 2, the bus timing diagram for write mode.

Table 6

Parameter	Symbol	Min.	Max.	Unit
E Cycle Time	t_c	500	-	ns
E Rise/Fall Time	t_R, t_F	-	20	ns
E Pulse Width(high, low)	t_W	230	-	ns
R/W and RS Setup Time	t_{SU1}	40	-	ns
R/W and RS Hold Time	t_{H1}	10	-	ns
Data Set-up Time	t_{SU2}	80	-	ns
Data Hold Time	t_{H2}	10	-	ns

Refer to Fig. 3, the bus timing diagram for read mode.

Table 7

Parameter	Symbol	Min.	Max.	Unit
E Cycle Time	t_c	500	-	ns
E Rise/Fall Time	t_R, t_F	-	20	ns
E Pulse Width(high, low)	t_W	230	-	ns
R/W and RS Setup Time	t_{SU}	40	-	ns
R/W and RS Hold Time	t_H	10	-	ns
Data Output Delay Time	t_D	-	120	ns
Data Hold Time	t_{DH}	5	-	ns

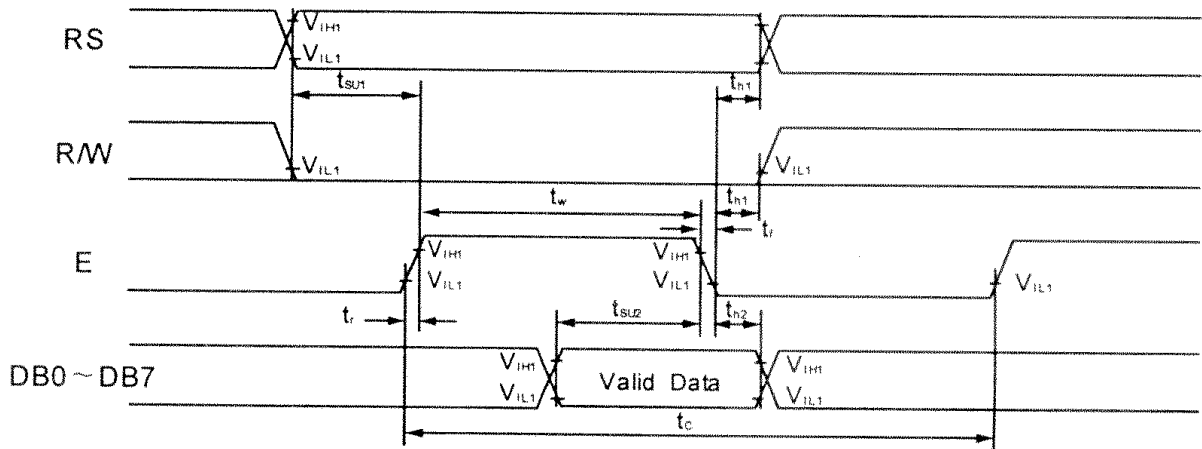


Figure 2: Write Mode Timing Diagram

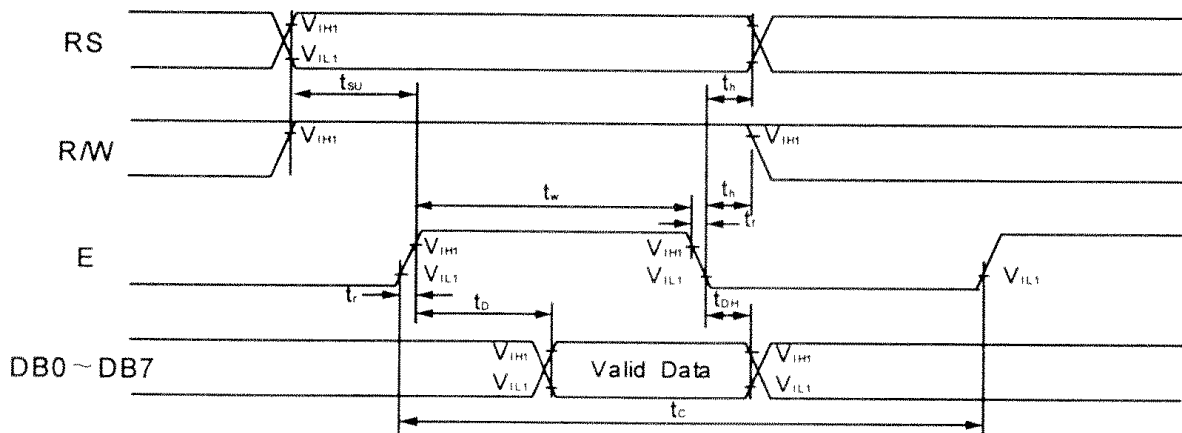


Figure 3: Read Mode Timing Diagram



5.3 Timing Diagram of VDD Against V0.

Power on sequence shall meet the requirement of Figure 4, the timing diagram of VDD against V0.

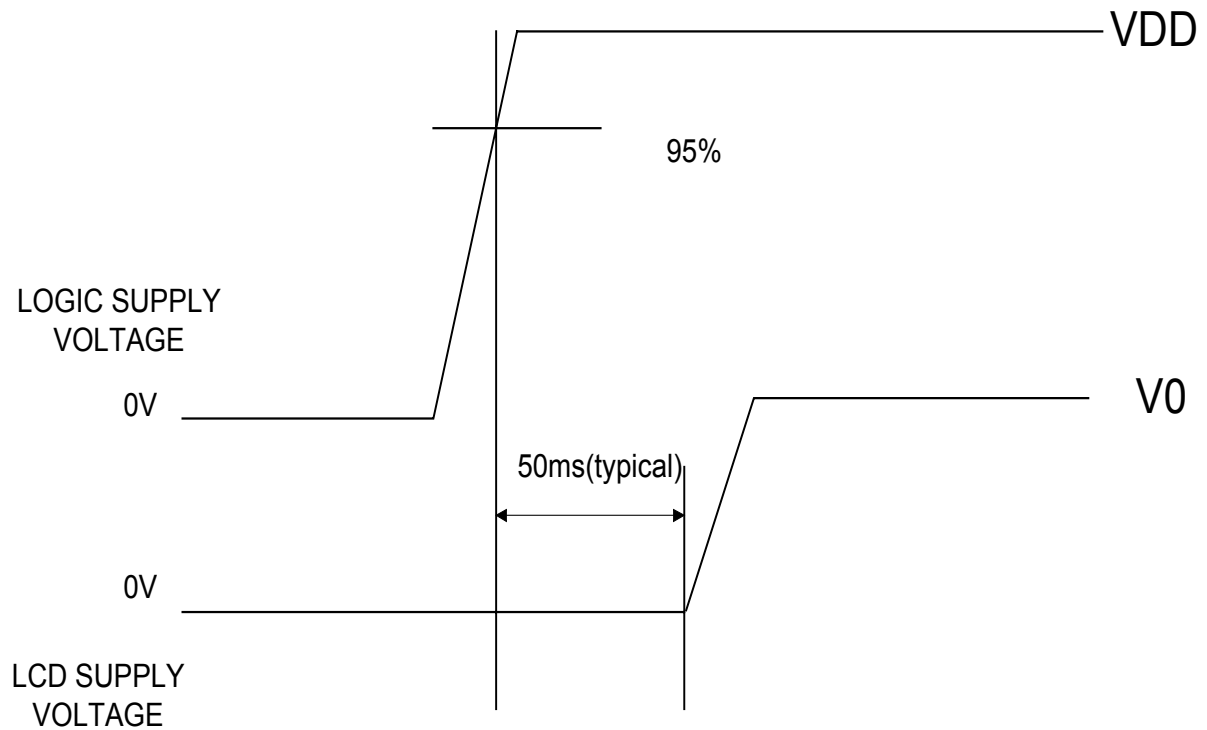


Figure 4: Timing Diagram of VDD Against V0.



6. Character Generator ROM (KS0066U-10B)

Upper 4bit / Lower 4bit		LLLL	LLHL	LLHH	LHLL	LHLH	LHHL	LHHH	HLLL	HLLH	HLHL	HLHH	HHLL	HHLH	HHHL	HHHH
LLLL	CG RAM (1)															
LLLH	(2)															
LLHL	(3)															
LLHH	(4)															
LHLL	(5)															
LHLH	(6)															
LHHL	(7)															
LHHH	(8)															
HLLL	(1)															
HLLH	(2)															
HLHL	(3)															
HLHH	(4)															
HHLL	(5)															
HHLH	(6)															
HHHL	(7)															
HHHH	(8)															

“Varitronix Limited reserves the right to change this specification.”

FAX: (852) 2343-9555.

URL: <http://www.varitronix.com>

- END -