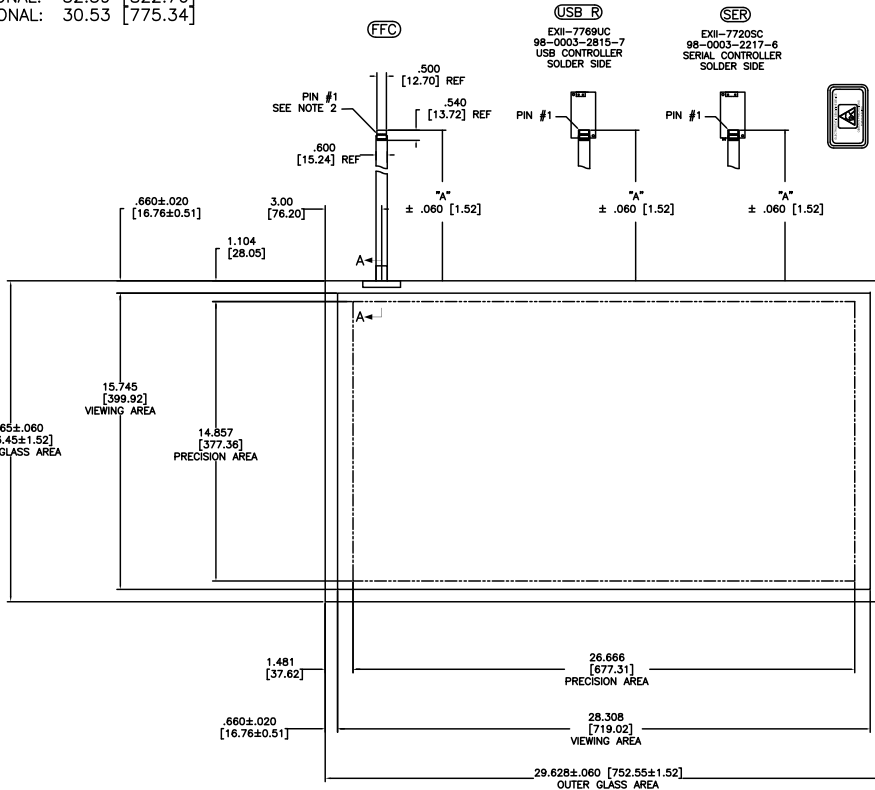
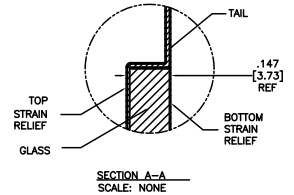


OGA DIAGONAL: 34.19 [868.45]
 VA DIAGONAL: 32.39 [822.76]
 PA DIAGONAL: 30.53 [775.34]

TOP LEVEL NUMBER	SKU 98 NUMBER	TYPE	DM "A" (TOTAL GLASS TO CONNECTOR)	A/G FINISH	PROD SPEC
17-9121-205	98-0003-2693-8	FFC	8.00" [203.20]	AG500	23655
17-9121-226	98-0003-2962-7	USB-R	8.00" [203.20]	AG500	23655
17-9121-227	98-0003-2290-3	SER	8.00" [203.20]	AG500	23655



ESD CLAMSHELL CASE IS USED WITH ALL NOV, USB AND SER TERMINATIONS.



- NOTES:
1. WEIGHT OF GLASS IN GRAMS: 2485±10%
 2. 5 PIN AMP CONNECTOR LATCH STYLE HOUSING P/N: 487526-4
 - TIN CONTACTS P/N: 2-487406-4
 - HOUSING ORIENTED WITH LATCH DOWN

PINOUT	
1	LL
2	UL
3	SHLD
4	UR
5	LR

UNITS	INCHES [MM]
TOLERANCES UNLESS OTHERWISE SPECIFIED	
.X	±
.XX	±.03 [.76]
.XXX	±.015 [.38]
ANGLES	±1°

3M 3M TOUCH SYSTEMS
 METHUEN, MA
 USA
 -COPYRIGHT-
 THIS DOCUMENT IS COPYRIGHTED PROPERTY OF THE 3M COMPANY AND MAY NOT BE REPRODUCED WITHOUT 3M WRITTEN PERMISSION OR USED OR DISCLOSED FOR OTHER THAN 3M AUTHORIZED PURPOSES.

REV	CHANGE NOTICE	DATE	BY
05	REVISE PER CO 030452	6/09	SB
04	REVISE PER CO 029669	10/08	SB
03	REVISE PER CO 029214	7/08	AH

MARKETING DRAWING
 SCT32NN 32.39" W

DRAWN	AH	8/07	CAD FORMAT	AUTOCAD	SHEET	1 OF 1
REV	E	DOCUMENT NO.	34642-MKT		REV	05