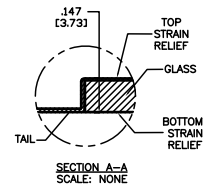
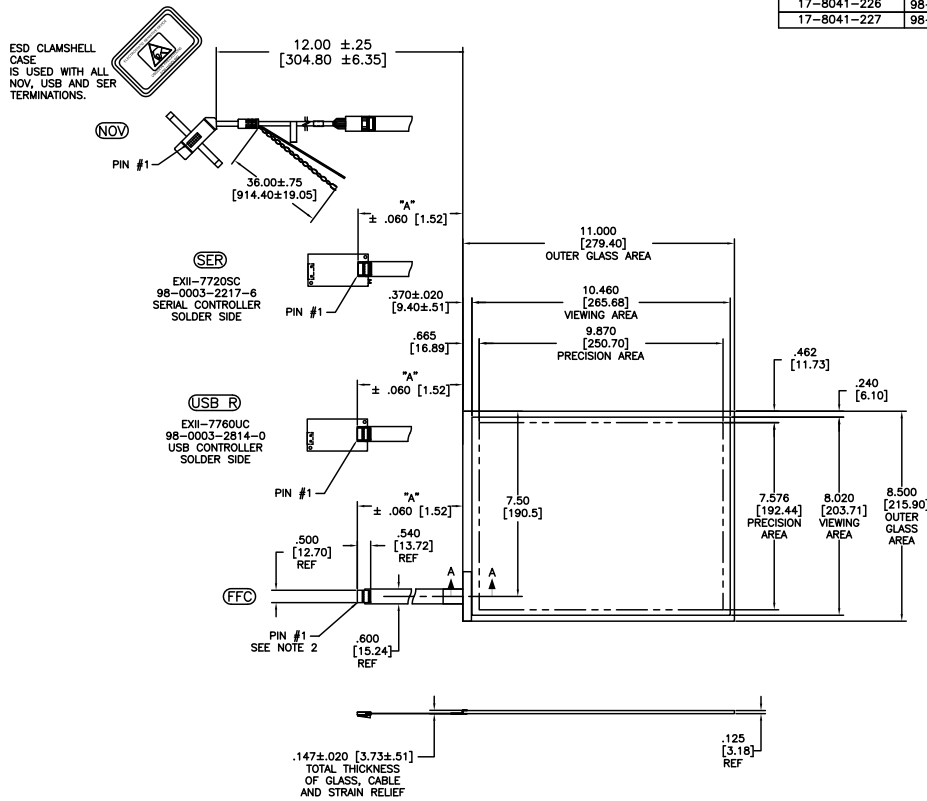


OGA DIAGONAL: 13.90 [353.10]
 VA DIAGONAL: 13.18 [334.79]
 PA DIAGONAL: 12.44 [316.04]

TOP LEVEL NUMBER	SKU 98 NUMBER	TYPE	DM "A" (TOTAL GLASS TO CONNECTOR)	A/G FINISH	PROD SPEC
17-8041-203	98-0003-2526-0	FFC	4.27" [108.46]	AG500	23655
17-8041-205	98-0003-3229-0	FFC	8.00" [203.20]	AG500	23655
17-8041-206	98-0003-2527-8	NOV	SEE DWG	AG500	23655
17-8041-221	98-0003-2530-2	SER	4.27" [108.46]	AG500	23655
17-8041-223	98-0003-2531-0	SER	6.00" [152.40]	AG500	23655
17-8041-226	98-0003-3230-8	USB R	8.00" [203.20]	AG500	23655
17-8041-227	98-0003-3231-6	SER	8.00" [203.20]	AG500	23655



PINOUT	
1	LR
2	LL
3	SHIELD
4	UL
5	UR

05	REVISED PER CO 030452	5/09	SEB
04	REVISED PER CO 030072	3/09	MTD
03	REVISED PER CO 026945	2/07	MDS
REV	CHANGE NOTICE	DATE	DRW

- NOTES:**
- WEIGHT OF GLASS IN GRAMS: 460±10%
 - 5 PIN AMP CONNECTOR LATCH STYLE HOUSING P/N: 487526-4 TIN CONTACTS P/N: 2-487406-4 HOUSING ORIENTED WITH LATCH DOWN.

UNITS	INCHES [MM]	3M TOUCH SYSTEMS METHUEN, MA USA	
TOLERANCES UNLESS OTHERWISE SPECIFIED		 <small>© COPYRIGHT 2005 THIS DOCUMENT IS COPYRIGHTED PROPERTY OF THE 3M COMPANY AND MAY NOT BE REPRODUCED WITHOUT 3M WRITTEN PERMISSION OR USED OR DISCLOSED FOR OTHER THAN 3M AUTHORIZED PURPOSES.</small>	
.X	±		
.XX	±.03 [.76]		
.XXX	±.015 [.38]		
ANGLES	±1°		
 THIRD ANGLE PROJECTION		DATE	9/05
DRAWN		K. CROWLEY	
DO NOT SCALE DRAWING		APP. FORMAT	AUTOCAD
SCALE		1 = 1	

TITLE	
MARKETING DRAWING	
SCT32NN 13.18"	
DATE	5/09
DRW	SEB
DATE	3/09
DRW	MTD
DATE	2/07
DRW	MDS
DATE	9/05
DRW	K. CROWLEY
APP. FORMAT	AUTOCAD
SHEET	1 OF 1
DATE	28265-MKT
REV	05