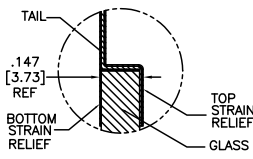


OGA DIAGONAL: 18.05 [458.50]
 VA DIAGONAL: 17.34 [440.38]
 PA DIAGONAL: 16.35 [415.30]

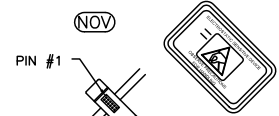


THIS PRODUCT IS MANUFACTURED IN ACCORDANCE WITH THE CURRENT CLEARTEK II CAPACITIVE TOUCHSCREEN SPECIFICATION (DOCUMENT 23655).

(USB R)
 EXII-7760UC
 USB CONTROLLER
 SOLDER SIDE

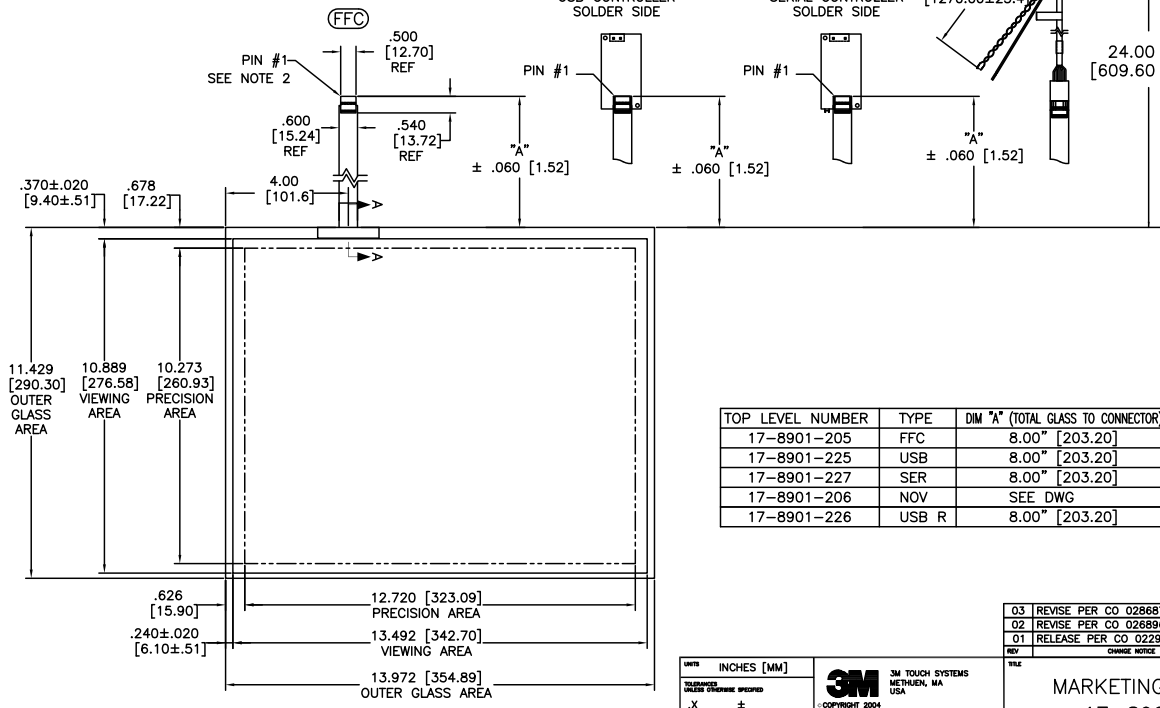
(USB)
 EXII-7710UC
 USB CONTROLLER
 SOLDER SIDE

(SER)
 EXII-7720SC
 SERIAL CONTROLLER
 SOLDER SIDE



ESD CLAMHELL CASE IS USED WITH ALL NOV, USB AND SER TERMINATIONS.

.147 ± .020 [3.73 ± .51]
 TOTAL THICKNESS OF GLASS, CABLE AND STRAIN RELIEF



TOP LEVEL NUMBER	TYPE	DIM "A" (TOTAL GLASS TO CONNECTOR)	A/G FINISH
17-8901-205	FFC	8.00" [203.20]	AG500
17-8901-225	USB	8.00" [203.20]	AG500
17-8901-227	SER	8.00" [203.20]	AG500
17-8901-206	NOV	SEE DWG	AG500
17-8901-226	USB R	8.00" [203.20]	AG500

- NOTES:
- WEIGHT OF GLASS IN GRAMS: 784.89 ± 10%
 - 5 PIN AMP CONNECTOR LATCH STYLE HOUSING P/N: 487526-4
 TIN CONTACTS P/N: 2-487406-4
 HOUSING ORIENTED WITH LATCH DOWN

PINOUT	
1	LL
2	UL
3	SHLD
4	UR
5	LR

UNITS: INCHES [MM]

TOLERANCES UNLESS OTHERWISE SPECIFIED:
 .X ±
 .XX ±.03 [.76]
 .XXX ±.015 [.38]
 ANGLES ±1°

THIRD ANGLE PROJECTION

DO NOT SCALE DRAWING

SCALE: 1 = 1

3M 3M TOUCH SYSTEMS
 WETUEN, MA
 USA

© COPYRIGHT 2004
 THIS DOCUMENT IS COPYRIGHTED PROPERTY OF THE 3M COMPANY AND MAY NOT BE REPRODUCED WITHOUT 3M WRITTEN PERMISSION OR USED OR DISCLOSED FOR OTHER THAN 3M AUTHORIZED PURPOSES.

DRAWN: A. OUELLETTE 12/05

03	REVISE PER CO 028687	2/08	ACM
02	REVISE PER CO 026896	2/07	ACM
01	RELEASE PER CO 022914	12/05	AVO
REV	CHANGE NOTICE	DATE	DWG

MARKETING DRAWING
 17-890X-2XX

DATE: 12/05

DOC FORMAT: AUTOCAD SHEET: 1 OF 1

REV: 03

DOCUMENT NO.: 29615-MKT