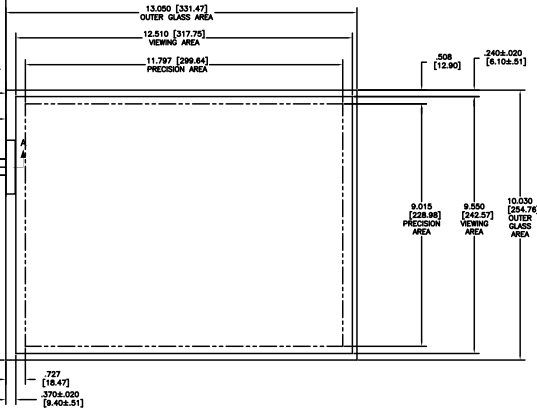
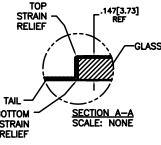
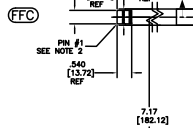
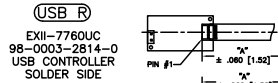
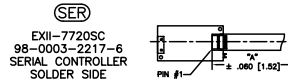
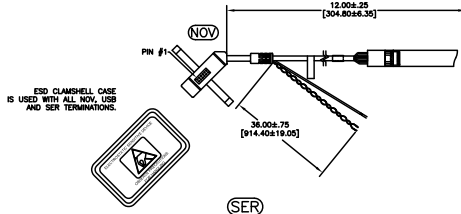


OGA DIAGONAL: 16.46 [418.06]
 VA DIAGONAL: 15.74 [399.76]
 PA DIAGONAL: 14.85 [377.12]

TOP LEVEL NUMBER	SKU 98 NUMBER	TYPE	DIM "A" (TOTAL GLASS TO CONNECTOR)	A/G FINISH	PROD SPEC
17-8201-203	98-0003-2559-1	FFC	4.27" [108.46]	AG500	23655
17-8201-221	98-0003-2563-3	SER	4.27" [108.46]	AG500	23655
17-8201-206	98-0003-2560-9	NOV	SEE DWG	AG500	23655
17-8201-204	98-0003-2937-9	FFC	6.00" [152.40]	AG500	23655
17-8201-223	98-0003-2564-1	SER	6.00" [152.40]	AG500	23655
17-8201-218	98-0003-2938-7	USB R	4.27" [108.46]	AG500	23655
17-8201-205	98-0003-3242-3	FFC	8.00" [203.20]	AG500	23655
17-8201-226	98-0003-3243-1	USB R	8.00" [203.20]	AG500	23655
17-8201-227	98-0003-3244-9	SER	8.00" [203.20]	AG500	23655



- NOTES:
- WEIGHT OF GLASS IN GRAMS: 643±10%
 - 5 PIN AMP CONNECTOR
 - LATCH STYLE HOUSING P/N: 487526-4
 - TIN CONTACTS P/N: 2-487406-4
 - HOUSING ORIENTED WITH LATCH DOWN

PINOUT	
1	LR
2	LL
3	SHLD
4	UL
5	UR

UNITS: INCHES [MM]

TOLERANCES UNLESS OTHERWISE SPECIFIED:
 .X ±
 .XX ±.03 [.76]
 .XXX ±.015 [.38]
 ANGLES ±1'

THIRD ANGLE PROJECTION

DO NOT SCALE DRAWING

SCALE: 1 = 1

3M 3M TOUCH SYSTEMS
 METHUEN, MA
 USA

THIS DOCUMENT IS COPYRIGHTED PROPERTY OF THE 3M COMPANY AND MAY NOT BE REPRODUCED WITHOUT 3M WRITTEN PERMISSION OR USED OR DISCLOSED FOR OTHER THAN 3M AUTHORIZED PURPOSES.

DRAWN: K.CROWLEY 9/05

REV	CHANGE NOTICE	DATE	DRW
05	REVISED PER CO 030452	5/09	SB
04	REVISED PER CO 030072	3/09	MTD
03	REVISED PER CO 028687	2/08	ACM

MARKETING DRAWING
 SCT32NN 15.74"

DATE: 9/05
 SHEET: 1 OF 1
 DOCUMENT NO.: 28295-MKT
 REV: 05